

Customer Information Sheet

DRAWING No.: S470-XX

SHEET 3 OF 4

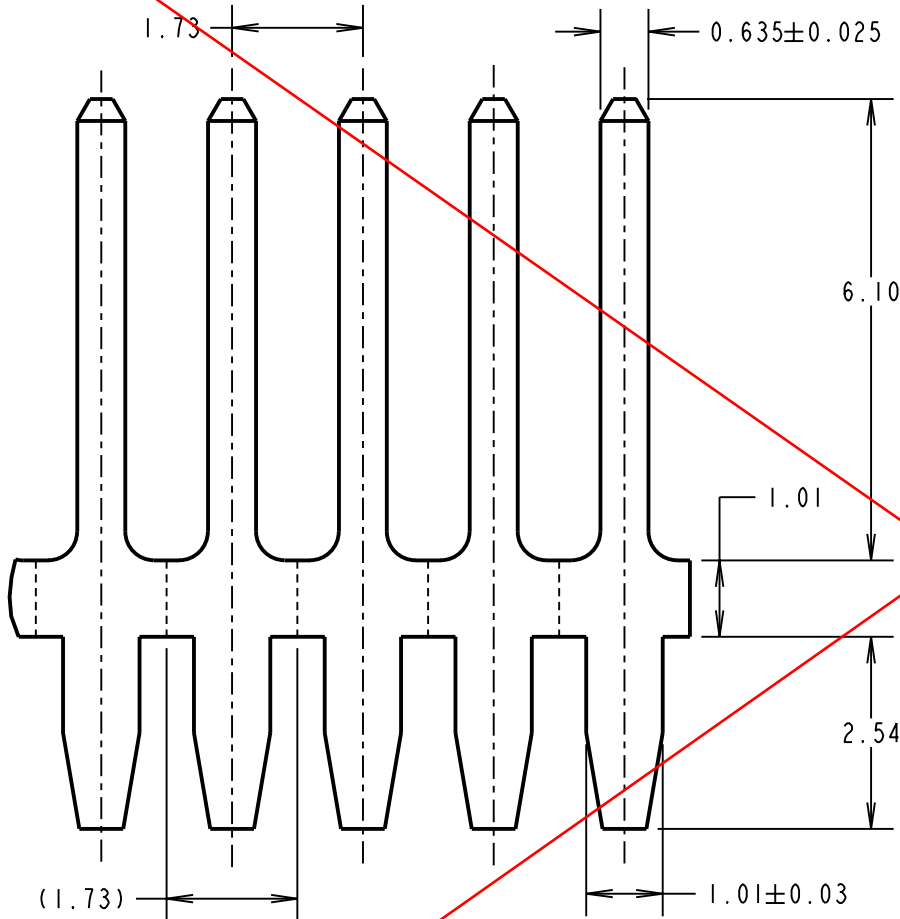
IF IN DOUBT - ASK

©

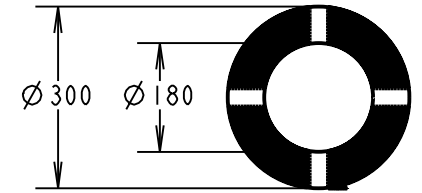
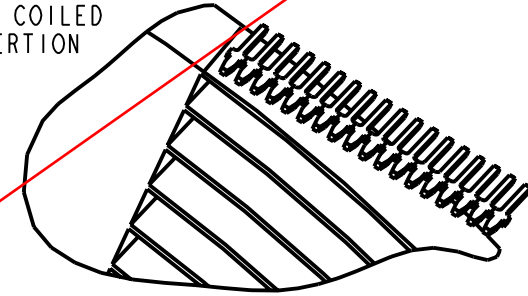
NOT TO SCALE

THIRD ANGLE PROJECTION

ALL DIMENSIONS IN mm



TERMINALS SHOWN COILED
READY FOR INSERTION



COIL DIMENSIONS

OBSOLETE

NOTES:

1. QUANTITY PER COIL = 40K.
COIL WEIGHT = 1.77kg.
2. RECOMMENDED MOUNTING HOLE SIZE = $\varnothing 1.015 \pm 0.075\text{mm}$.
3. ALL TOLERANCES ARE ± 0.05 UNLESS OTHERWISE STATED.

ORDER CODE:

S470-XX

FINISH

- 06 - 4 μ 90/10 TIN/LEAD
- 46 - 4 μ 100% TIN

SB	12	23.03.11	10770
NAME	ISS.	DATE	C/NOTE
APPROVED:		S.BENNETT	
CHECKED:		R.ADDE	
DRAWN:		W. J. BOURNE	
CUSTOMER REF.:			
ASSEMBLY DRG:			

HARWIN

HARWIN USA TEL: 603 893 5376 FAX: 603 893 5396 mis@harwin.com	HARWIN Europe (UK) TEL: 023 9231 4545 FAX: 023 9231 4590 mis@harwin.co.uk	HARWIN Asia TEL: +65 6 779 4909 FAX: +65 6 779 3868 mis@harwin.com.sg
--	--	--

THIS DRAWING AND ANY INFORMATION OR DESCRIPTIVE MATTER SET OUT HEREON ARE CONFIDENTIAL AND COPYRIGHT PROPERTY OF THE HARWIN GROUP AND MUST NOT BE DISCLOSED, LOANED, COPIED OR USED FOR MANUFACTURING, TENDERING OR FOR ANY OTHER PURPOSE WITHOUT THEIR WRITTEN PERMISSION.

TOLERANCES

~~X = $\pm 1\text{mm}$
X.X = $\pm 0.25\text{mm}$
X.XX = $\pm 0.10\text{mm}$
X.XXX = $\pm 0.01\text{mm}$
ANGLES = $\pm 5^\circ$
UNLESS STATED~~

MATERIAL:

BRASS CW508L HARD TO
BS EN 1652
(CuZn37 HARD)

FINISH: SEE ORDER CODE

S/AREA:

mm²

TITLE:

0.635mm SQUARE VERTICAL
COILED TAB TERMINAL

DRAWING NUMBER:

S470-XX

SHT
3 OF 4

Customer Information Sheet

DRAWING No.: S470-XX

SHEET 4 OF 4

IF IN DOUBT - ASK

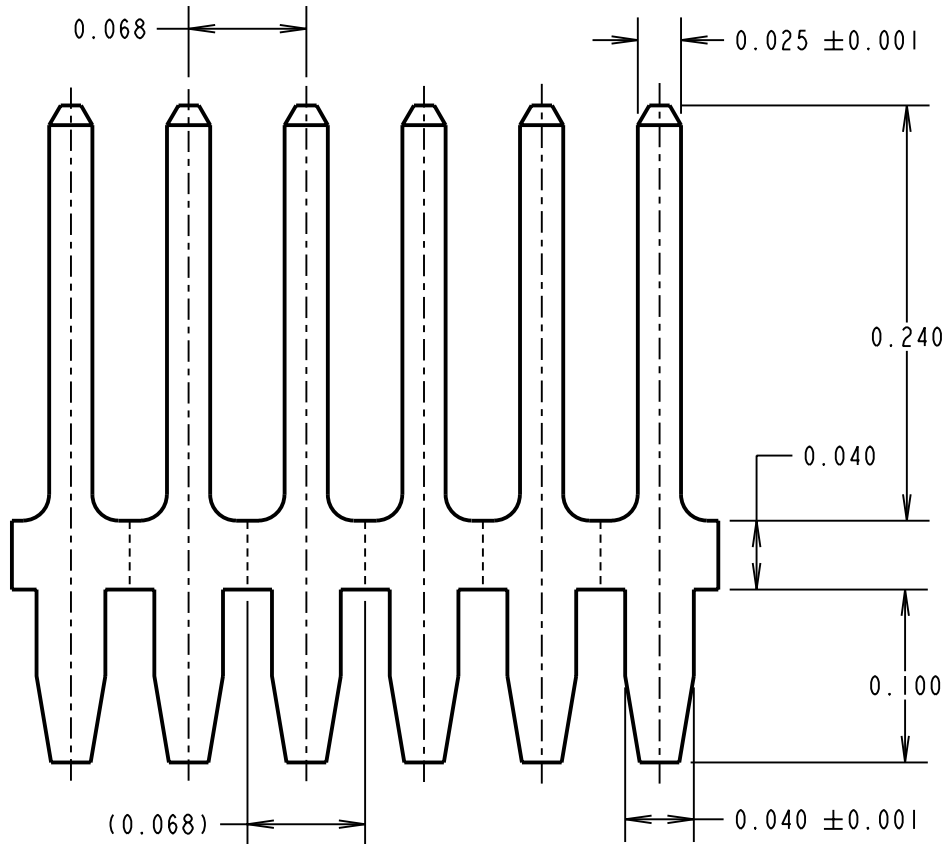
©

NOT TO SCALE

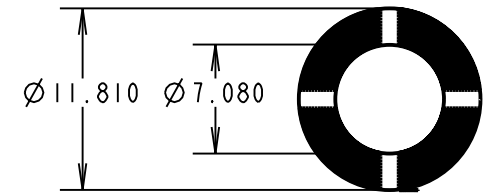
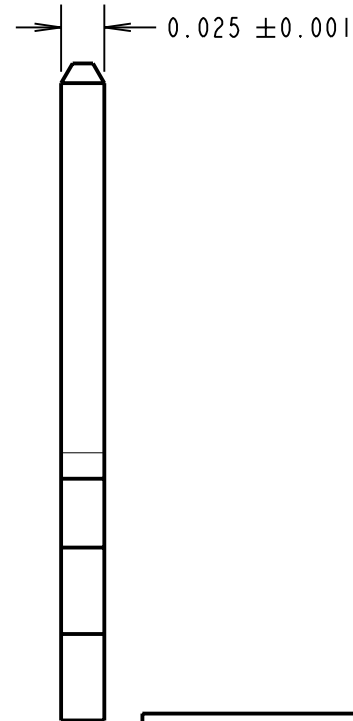
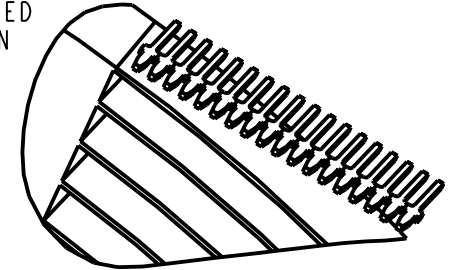
THIRD ANGLE PROJECTION

ALL DIMENSIONS IN mm

INCHES



TERMINALS SHOWN COILED
READY FOR INSERTION



COIL DIMENSIONS

- NOTES:
1. QUANTITY PER COIL = 40K.
COIL WEIGHT = 1.77kg.
 2. RECOMMENDED MOUNTING HOLE SIZE = ∅0.040" ± 0.003".
 3. ALL TOLERANCES ARE ± 0.002" UNLESS OTHERWISE STATED.

ORDER CODE:
S470-XX

FINISH _____

06 - 0.16µ" 90/10 TIN/LEAD
46 - 0.16µ" 100% TIN

SB	12	23.03.11	10770
NAME	ISS.	DATE	C/NOTE
APPROVED:		S.BENNETT	
CHECKED:		R.ADDE	
DRAWN:		W. J. BOURNE	
CUSTOMER REF.:			
ASSEMBLY DRG:			

HARWIN

HARWIN USA TEL: 603 893 5376 FAX: 603 893 5396 mis@harwin.com	HARWIN Europe (UK) TEL: 023 9231 4545 FAX: 023 9231 4590 mis@harwin.co.uk	HARWIN Asia TEL: +65 6 779 4909 FAX: +65 6 779 3868 mis@harwin.com.sg
--	--	--

THIS DRAWING AND ANY INFORMATION OR DESCRIPTIVE MATTER SET OUT HEREON ARE CONFIDENTIAL AND COPYRIGHT PROPERTY OF THE HARWIN GROUP AND MUST NOT BE DISCLOSED, LOANED, COPIED OR USED FOR MANUFACTURING, TENDERING OR FOR ANY OTHER PURPOSE WITHOUT THEIR WRITTEN PERMISSION.

~~TOLERANCES~~

~~X = ± 1mm~~
~~X.X = ± 0.25mm~~
~~X.XX = ± 0.10mm~~
~~X.XXX = ± 0.01mm~~

~~ANGLES = ± 5°~~

~~UNLESS STATED~~

MATERIAL:
BRASS CW508L HARD TO
BS EN 1652
(CuZn37 HARD)

FINISH: SEE ORDER CODE

S/AREA: mm²

TITLE:
0.025" SQUARE VERTICAL
COILED TAB TERMINAL

DRAWING NUMBER:
S470-XX

SHT
4 OF 4