

# Customer Information Sheet

DRAWING No.: S19-501

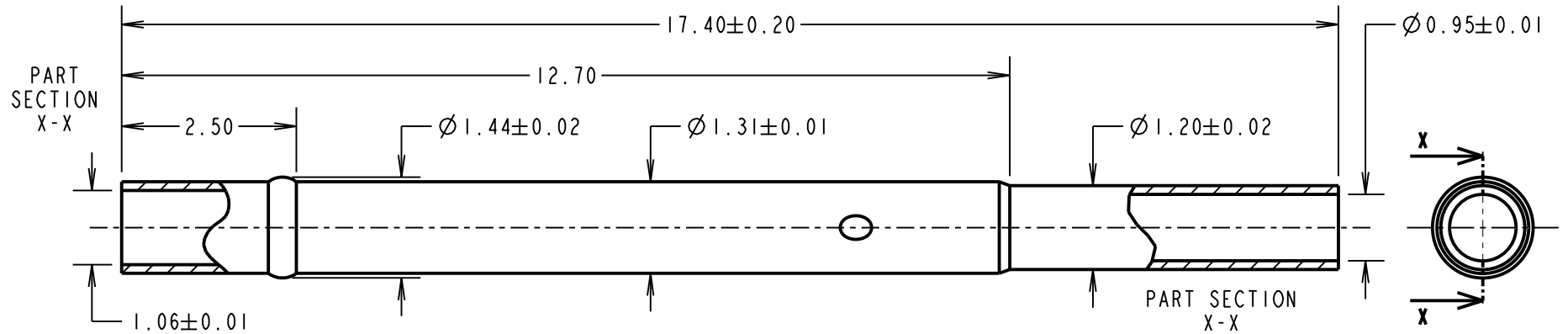
IF IN DOUBT - ASK

©

NOT TO SCALE

THIRD ANGLE PROJECTION

ALL DIMENSIONS IN mm



**NOTES:**

1. TO BE USED WITH PROBES P19-XX21.
2. SUITABLE FOR A MINIMUM DISTANCE BETWEEN CENTRES OF 1.90mm.
3. SPECIFICATIONS FOR PROBE PERFORMANCE ARE GIVEN ON THE PROBE DRAWING.
4. RECOMMENDED HOLE SIZE =  $\varnothing 1.40$ mm.
5. SUITABLE FOR USE WITH 24, 26, 28 & 30 AWG WIRE (SOLDER).
6. PLATING = 0.05 $\mu$ m GOLD OVER 2.03-3.05 $\mu$ m NICKEL.

RTP	5	18.12.18	21501
NAME	ISS.	DATE	C/NOTE
APPROVED: R.PORTLOCK			
CHECKED: S.BENNETT			
DRAWN: M.PERREN			
CUSTOMER REF.:			
ASSEMBLY DRG:			

**HARWIN**

www.harwin.com  
technical@harwin.com

THIS DRAWING AND ANY INFORMATION OR DESCRIPTIVE MATTER SET OUT HEREON ARE CONFIDENTIAL AND COPYRIGHT PROPERTY OF THE HARWIN GROUP AND MUST NOT BE DISCLOSED, LOANED, COPIED OR USED FOR MANUFACTURING, TENDERING OR FOR ANY OTHER PURPOSE WITHOUT THEIR WRITTEN PERMISSION.

**TOLERANCES**  
X. =  $\pm 1$ mm  
X.X =  $\pm 0.50$ mm  
X.XX =  $\pm 0.10$ mm  
X.XXX =  $\pm 0.01$ mm  
**ANGLES =  $\pm 5^\circ$**   
**UNLESS STATED**

**MATERIAL:**

BRASS

**FINISH:** SEE ABOVE

**S/AREA:** mm<sup>2</sup>

**TITLE:**

1.90mm MIN. CENTRE TWO-PIECE  
SPRING PROBE SLEEVE

**DRAWING NUMBER:**

**S19-501**

SHT  
2  
OF 2