

Customer Information Sheet

DRAWING No.: S1751F46

IF IN DOUBT - ASK

©

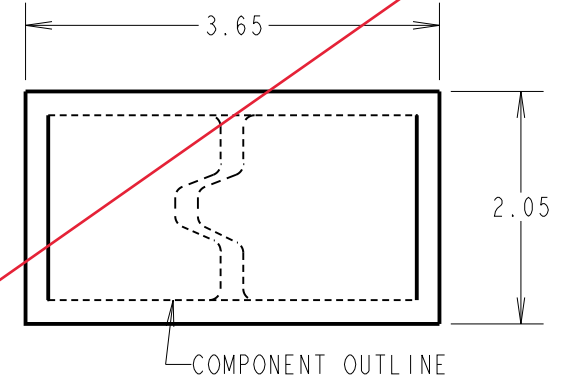
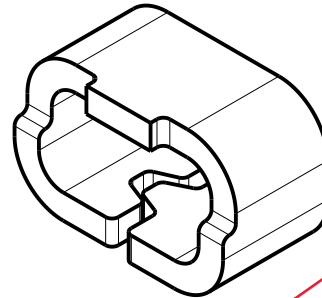
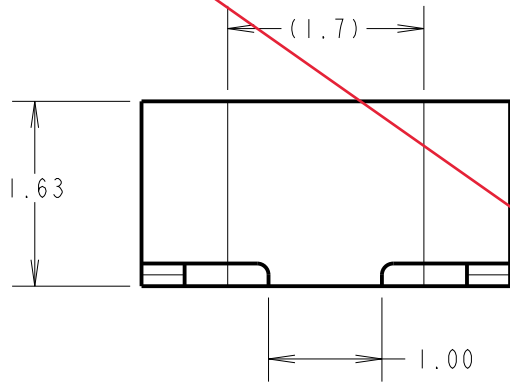
NOT TO SCALE

THIRD ANGLE PROJECTION

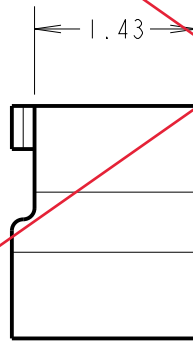
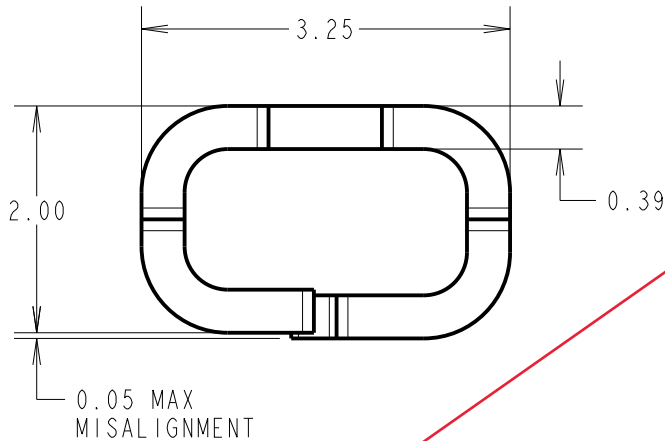
ALL DIMENSIONS IN mm

NOTES:
1. PACKING: 100 PER BAG.

OBSOLETE



RECOMMENDED PAD LAYOUT
TOLERANCE $\pm 0.05\text{mm}$



SPECIFICATIONS:
MATERIAL = BRASS
FINISH = $4\mu\text{m}$ 100% TIN OVER NICKEL
ELECTRICAL:
CURRENT RATING = 2A MAX
CONTACT RESISTANCE = $20\text{m}\Omega$ MAX
ENVIRONMENTAL:
OPERATING TEMPERATURE = -55°C TO $+125^\circ\text{C}$

HARWIN PART No.	FARNELL PART No.
S1751F46	102-2338

RTP	7	24.02.23	32287
NAME	ISS.	DATE	CN/CO
APPROVED: R.PORTLOCK			
CHECKED: M.RUDKIN			
DRAWN: J. ENRIGHT			
CUSTOMER REF.:			
ASSEMBLY DRG:			

HARWIN

www.harwin.com
technical@harwin.com

THIS DRAWING AND ANY INFORMATION OR DESCRIPTIVE MATTER SET OUT HEREON ARE CONFIDENTIAL AND COPYRIGHT PROPERTY OF THE HARWIN GROUP AND MUST NOT BE DISCLOSED, LOANED, COPIED OR USED FOR MANUFACTURING, TENDERING OR FOR ANY OTHER PURPOSE WITHOUT THEIR WRITTEN PERMISSION.

TOLERANCES
X. = $\pm 1\text{mm}$
X.X = $\pm 0.50\text{mm}$
X.XX = $\pm 0.20\text{mm}$
X.XXX = $\pm 0.01\text{mm}$
ANGLES = $\pm 5^\circ$
UNLESS STATED

MATERIAL:
BRASS CW505L TO BS EN 1652 (CuZn30)
FINISH: SEE ABOVE
S/AREA: mm²

TITLE:
SURFACE MOUNT TEST TERMINAL (LOOSE)
DRAWING NUMBER:
S1751F46