

# Customer Information Sheet

DRAWING No.: S0921-46R

SHEET 2 OF 2

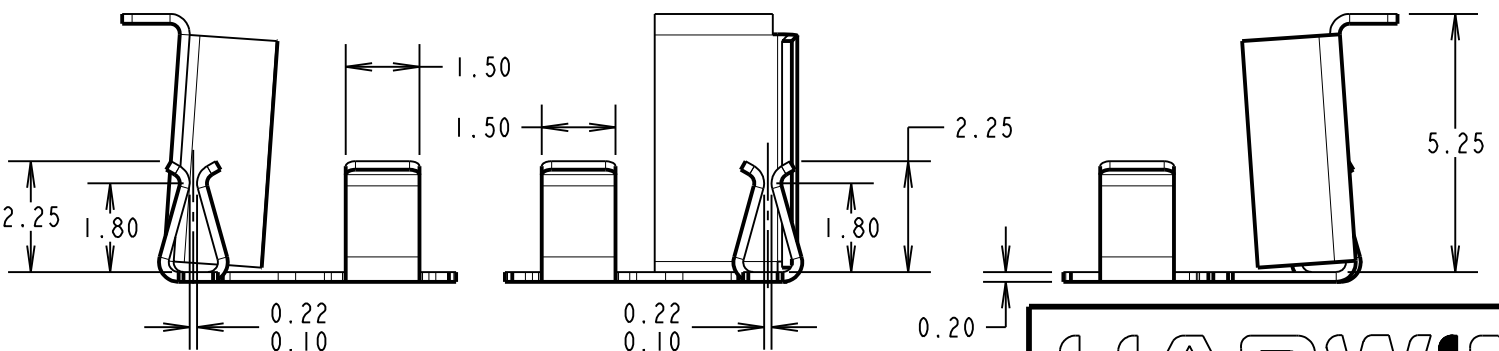
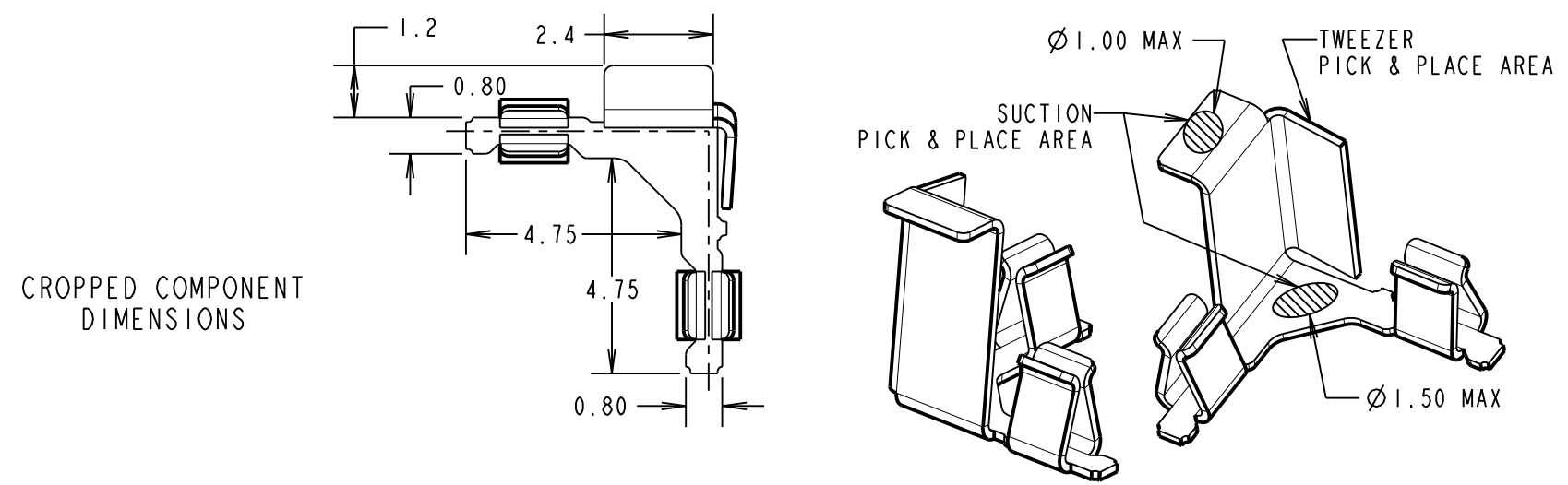
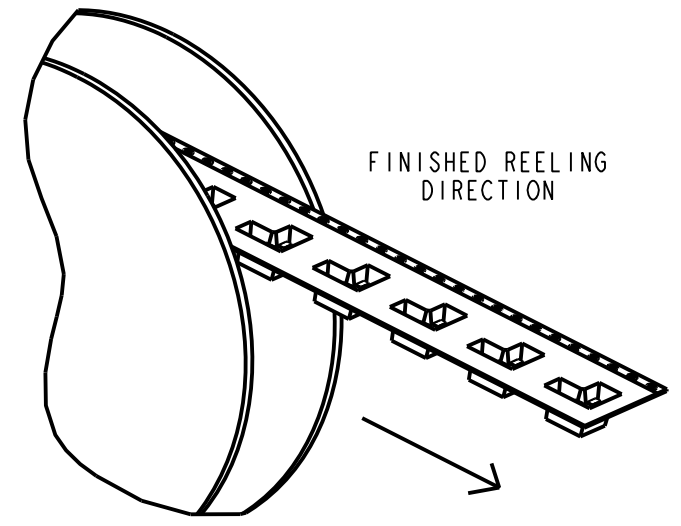
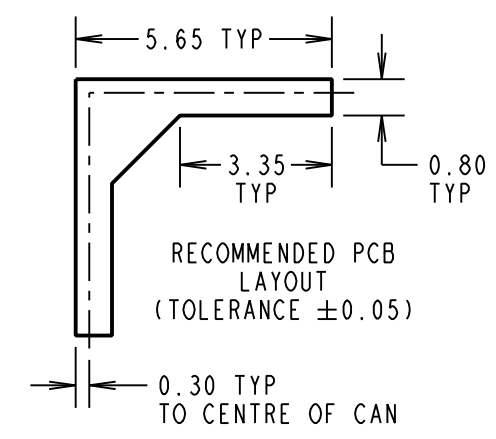
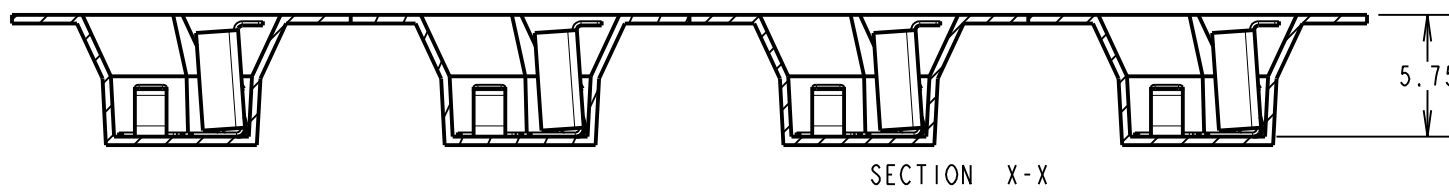
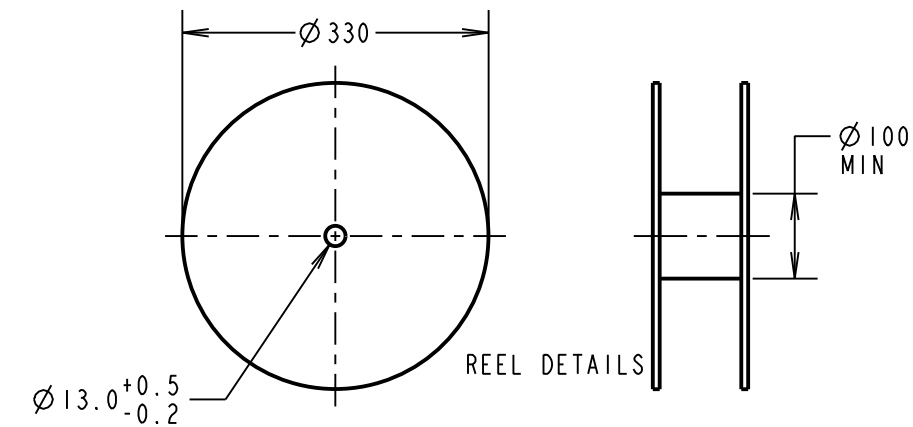
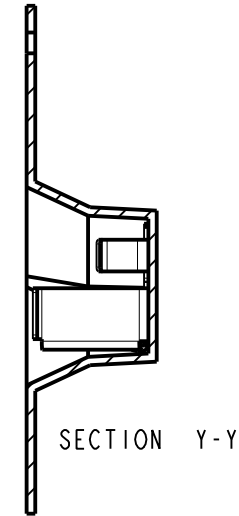
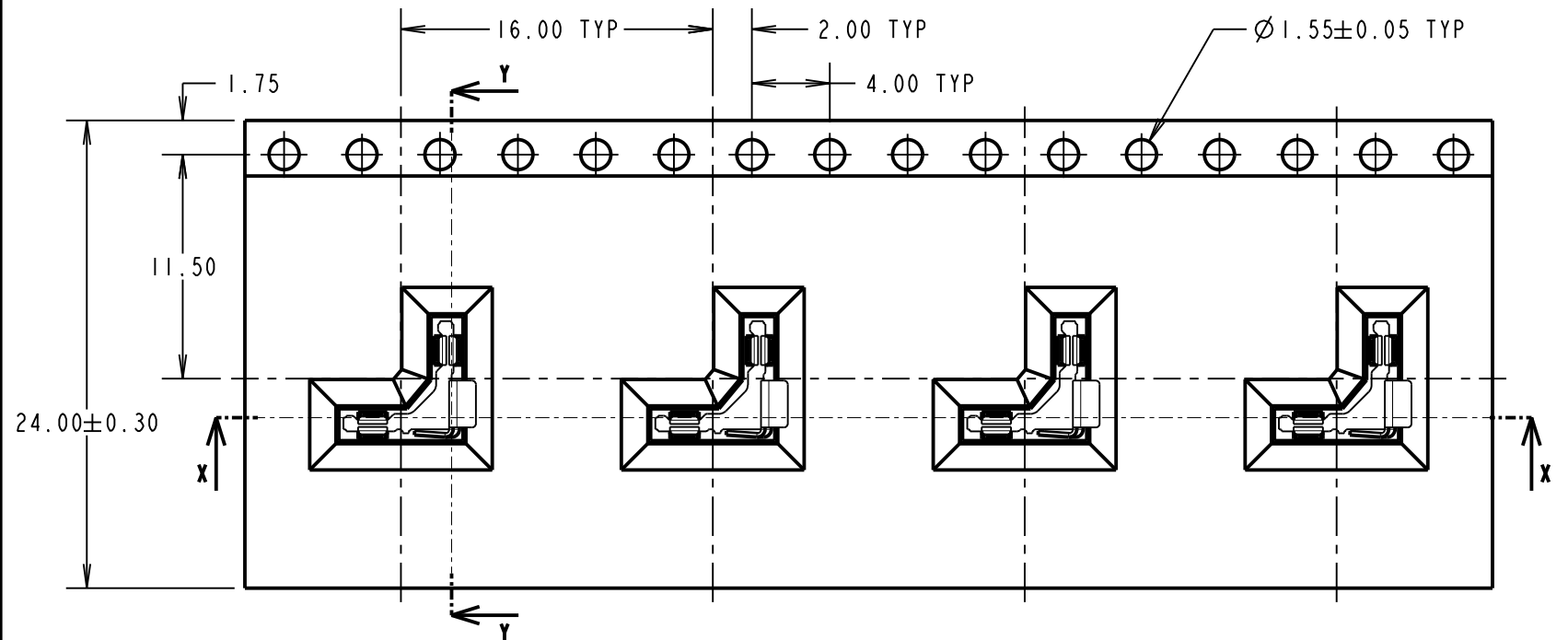
IF IN DOUBT - ASK

©

NOT TO SCALE

THIRD ANGLE PROJECTION

ALL DIMENSIONS IN mm



**COMPONENT SPECIFICATION:**  
 MATERIAL = CUPRO NICKEL  
 FINISH = 2.4-3.6µm 100% TIN OVER 2.0-2.8µm NICKEL  
 ELECTRICAL:  
 CONTACT RESISTANCE = 25mΩ MAX  
 MECHANICAL:  
 MAX INSERTION FORCE WITH 0.30mm SHEET = 15.00N  
 MIN INSERTION FORCE WITH 0.30mm SHEET = 0.75N  
 MAX WITHDRAWAL FORCE WITH 0.30mm SHEET = 6.00N  
 MIN WITHDRAWAL FORCE WITH 0.30mm SHEET = 0.30N  
 DURABILITY = 20 CYCLES  
 ENVIRONMENTAL:  
 OPERATING TEMPERATURE = -55°C TO +105°C

- NOTES:**  
 1. QUANTITY OF COMPONENTS PER REEL: 600.  
 2. THIS PRODUCT IS TAPE AND REELED IN GENERAL ACCORDANCE WITH EIA-481-2 (ELECTRONICS INDUSTRIES ASSOCIATION).  
 3. RECOMMENDED CAN THICKNESS: 0.30-0.40mm.

MR	I	05.03.19	21823
NAME	ISS.	DATE	C/NOTE
APPROVED:		M.RUDKIN	
CHECKED:		S.BENNETT	
DRAWN:		S.BENNETT	
CUSTOMER REF.:			
ASSEMBLY DRG:			

**HARWIN**  
 www.harwin.com  
 technical@harwin.com

THIS DRAWING AND ANY INFORMATION OR DESCRIPTIVE MATTER SET OUT HEREON ARE CONFIDENTIAL AND COPYRIGHT PROPERTY OF THE HARWIN GROUP AND MUST NOT BE DISCLOSED, LOANED, COPIED OR USED FOR MANUFACTURING, TENDERING OR FOR ANY OTHER PURPOSE WITHOUT THEIR WRITTEN PERMISSION.

**TOLERANCES**  
 X. = ±1mm  
 X.X = ±0.50mm  
 X.XX = ±0.20mm  
 X.XXX = ±0.01mm  
 ANGLES = ±5°  
 UNLESS STATED

**MATERIAL:**  
 SEE ABOVE  
**FINISH:** SEE ABOVE  
**S/AREA:** mm<sup>2</sup>

**TITLE:**  
 CORNER RFI SHIELD CLIP  
 IN TAPE AND REEL  
**DRAWING NUMBER:**  
 S0921-46R  
 SHT 2 OF 2