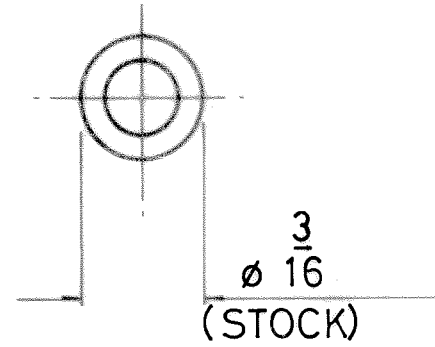
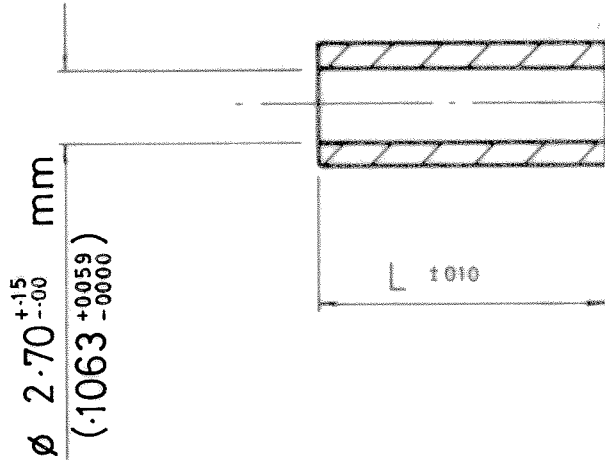


DRAWING NUMBER
 R6180-02 —
 R6185-02



THIRD ANGLE PROJECTION

DO NOT SCALE



NOTE

1 HOLE TO BE MANU IN ACCORDANCE WITH BS 4320 1968

R6185-02	MAI 08/25	.750	19.05	11	8.3.79	FINISH WAS DTD 9/9
R6184-02	MAI 08/25	.625	15.88	10	1.11.78	WAS MAI 08/25 TO MA 1102/2.5
R6183-02	MAI 08/25	.500	12.70	1	6572	
R6182-02	MAI 08/25	.375	9.52			ISS. DATE CHANGE
R6181-02	MAI 08/25	.250	6.35			APPD. <i>[Signature]</i>
R6180-02	MAI 08/25	.125	3.18			CHKD. <i>[Signature]</i>
						DRAWN <i>[Signature]</i>
						HOLD REF. R6080/2.5 - R6085/2.5
PART NO	DRG NO	IN	mm			ASSY. DRAWING
		L ±0.10				

HARWIN ENGINEERS S.A.
 PORTSMOUTH PO 6 1RT

MATERIAL BRASS BS249
 TITLE
CLEARANCE SPACER - ROUND

FINISH NICKEL PLATE 100/10
 TOLERANCES
 FRAC. ± 1/64 DEC ± .005 MM ±
 DIMS. IN INCH mm SCALE —

DRAWING NUMBER
 R6180-02 —
 R6185-02

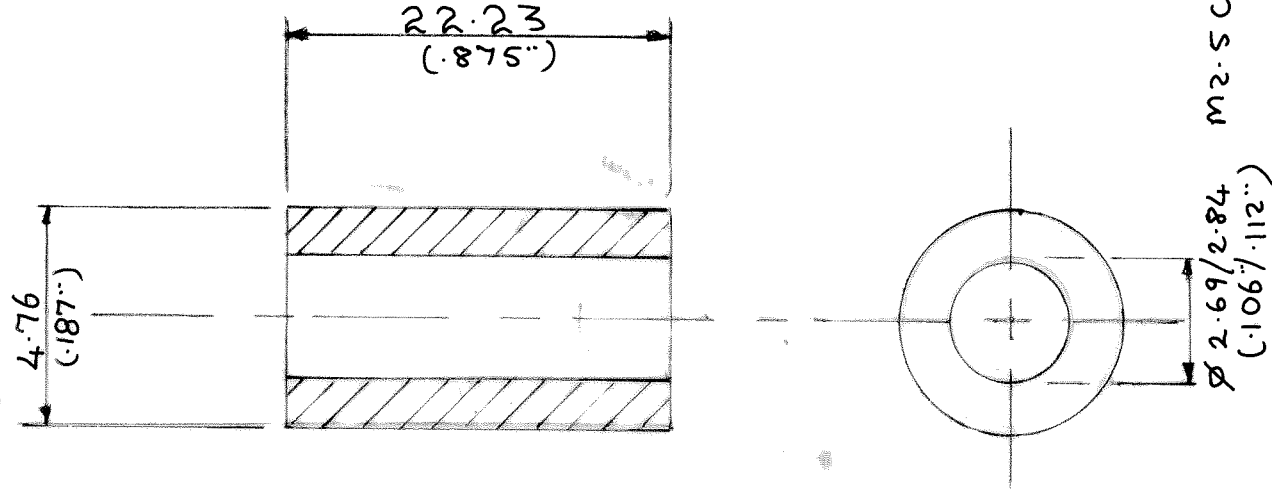
DRAWING NUMBER

R6186-02



THIRD ANGLE PROJECTION

DO NOT SCALE



1	6-3-79	—
ISS.	DATE	CHANGE
APPD.	<i>Blogg</i>	
CHKD.	<i>[Signature]</i>	
DRAWN	<i>Philip</i>	
HARWIN REF.		
CAM NO.	MACH. NO.	ASSY. DRAWING

HARWIN ENGINEERS S.A.
PORTSMOUTH PO6 1RT

MATERIAL BRASS BS 2874 CZ121

TITLE

SPACER

FINISH NICKEL PLATE

TOLERANCES

FRAC. ± 1/64 DEC ± .005 MM ± .13

DIMS. IN mm (in)

SCALE —

DRAWING NUMBER

R6186-02