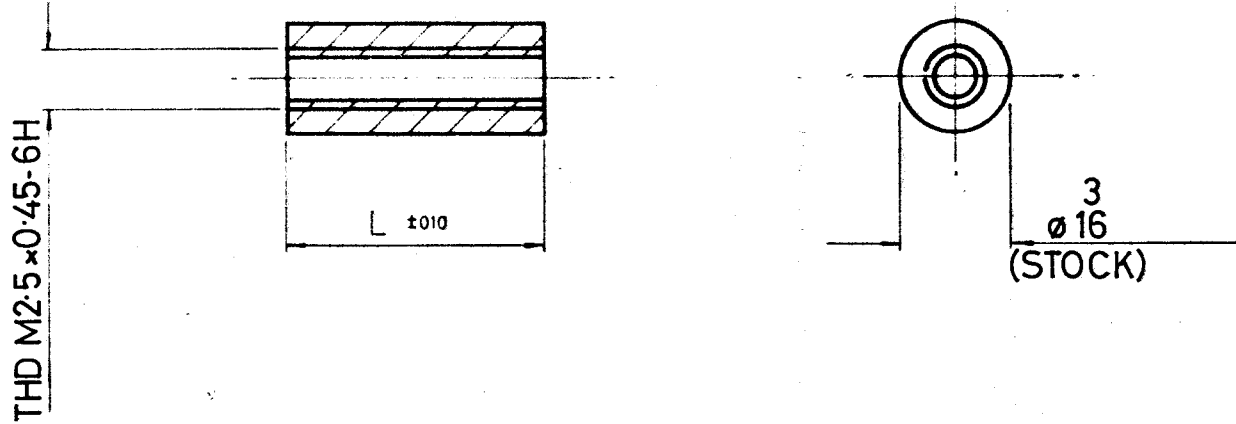


DRAWING NUMBER  
 R6150-02  
 R6155-02



THIRD ANGLE PROJECTION

DO NOT SCALE



NOTE

1 THD. TO BE MANU. IN ACCORDANCE WITH BS 3643 PT2 1966

R6150-02		.125	3-18	12	2/10/87	1169
R6155-02		.750	19-05	11	5-3-79	FINISH WAS STD 9.1.9
R6154-02		.625	15-88	10	1-11-78	WAS MA1115/2.5 TO MA1119/2.5
R6153-02		.500	12-70	1	4-5-72	
R6152-02		.375	9-52	ISS. DATE CHANGE		
R6151-02		.250	6-35	APPD. <i>[Signature]</i>		
PART NO	DRG NO	IN	mm	CHKD. <i>[Signature]</i>		
		L ±0.10		DRAWN <i>[Signature]</i>		
				SOLD REF. R6050/2.5-R6055/2.5		
				ASSY. DRAWING		

**HARWIN ENGINEERS S.A.**  
 PORTSMOUTH PO6 1RT

MATERIAL BRASS TO BS2874 CZ121  
 TITLE  
 THREADED SPACER - ROUND

FINISH NICKEL PLATE (F0201)  
 TOLERANCES  
 FRAC. ±1/64 DEC ±.005 MM ±  
 DIMS. IN INCH(mm) SCALE —

DRAWING NUMBER  
 R6150-02  
 R6155-02

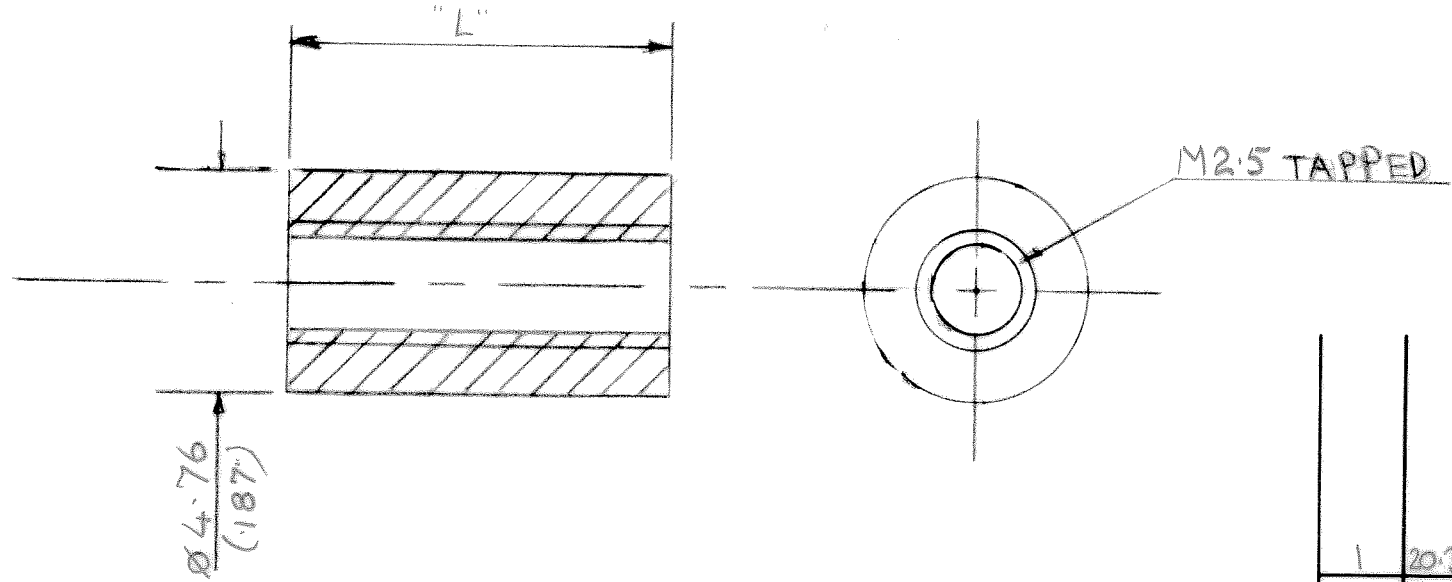
DRAWING NUMBER  
 R6156-02 —  
 R6157-02



THIRD ANGLE PROJECTION

DO NOT SCALE

6



R6156-02	22.23	.875	R101894C
R6157-02	25.40	1.000	
DRG. No.	MM	IN	
	LENGTH 'L'		

1	20.3.79	
ISS.	DATE	CHANGE
APPD.	<i>SL</i>	
CHKD.		
DRAWN	<i>J. Philipson</i>	
HARWIN REF.		
CAM No.	MACH. No.	ASSY. DRAWING

**HARWIN ENGINEERS S.A.**  
 PORTSMOUTH PO6 IRT

MATERIAL BRASS BS 2874 CZ 121  
 TITLE (ROUND)  
 THREADED SPACER

FINISH NICKEL PLATE  
 TOLERANCES  
 FRAC. ± 1/64 DEC ± .005 MM ± .13  
 DIMS. IN mm (in) SCALE —

DRAWING NUMBER  
 R 6156-02 —  
 R6157-02