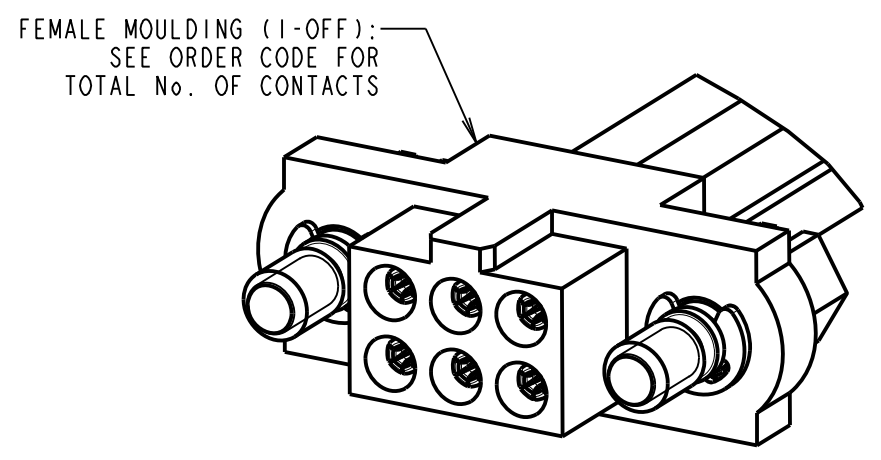
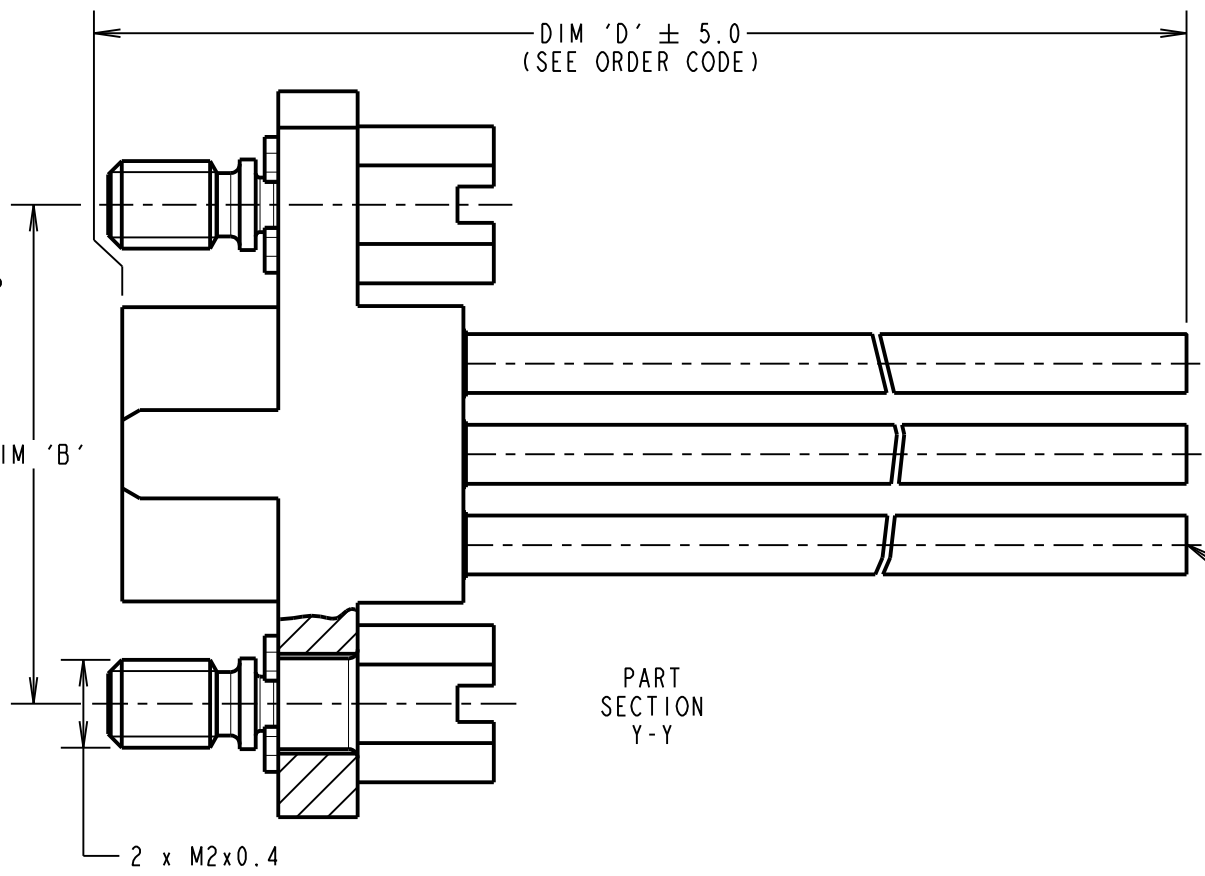
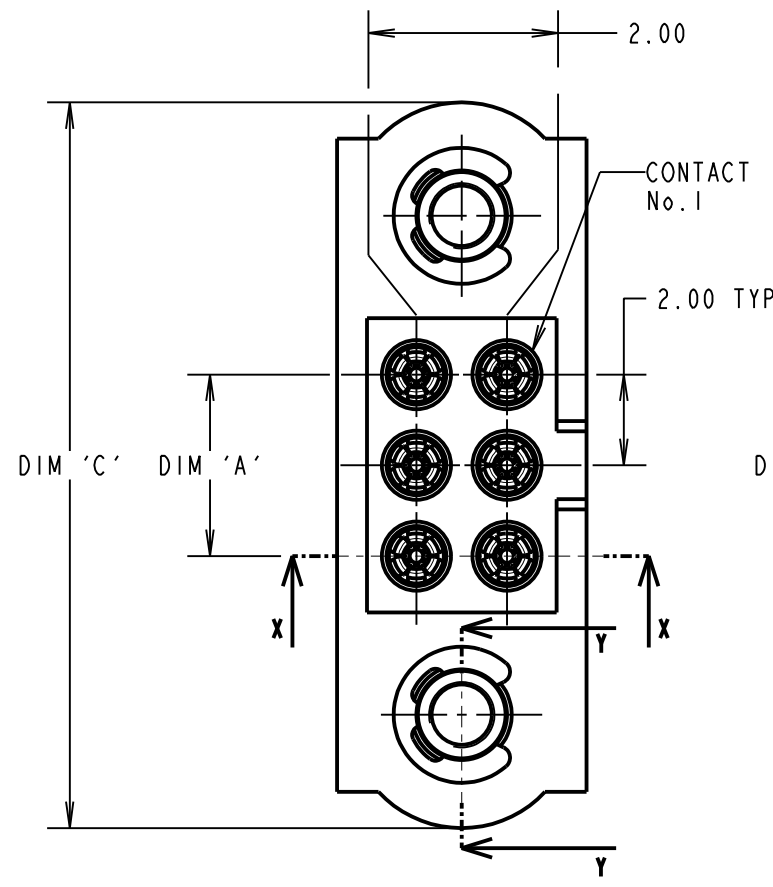


# Customer Information Sheet

DRAWING No.: M80-FB1XX68FI-XXXXL      IF IN DOUBT - ASK      ©      NOT TO SCALE      THIRD ANGLE PROJECTION      ALL DIMENSIONS IN mm



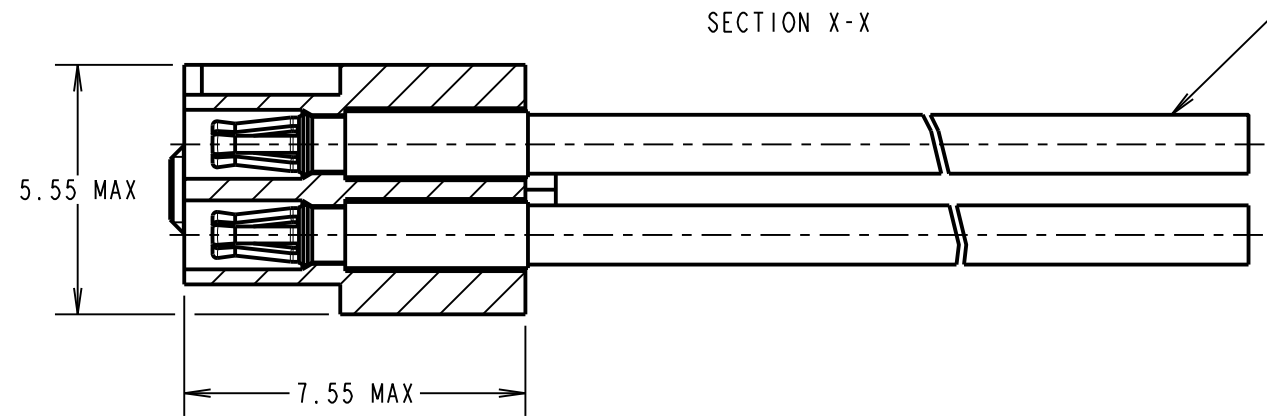
CONTACT No.	WIRE COLOUR
1	BLACK
2	BROWN
3	RED
4	ORANGE
5	YELLOW
6	GREEN
7	BLUE
8	VIOLET
9	GREY
10	WHITE

WIRE COLOURS REPEAT IN ABOVE ORDER FOR ASSEMBLIES OVER 10 CONTACTS

- NOTES:  
 1. CABLE ASSEMBLIES WILL BE BULK PACKED IN BAGS.  
 2. FOR COMPLETE SPECIFICATION, SEE COMPONENT SPECIFICATION C005XX (LATEST ISSUE) AND C049XX (LATEST ISSUE).

DIMENSION	MEASUREMENT
DIM 'A'	TOTAL No. OF CONTACTS - 2.0
DIM 'B'	TOTAL No. OF CONTACTS + 5.0
DIM 'C'	TOTAL No. OF CONTACTS + 10.0

EXAMPLE PART No. :  
 10 CONTACT CONNECTOR WITH 150mm OF 22AWG WIRE = M80-FB11068FI-0150L  
 50 CONTACT CONNECTOR WITH 150mm OF 22AWG WIRE = M80-FB15068FI-0150L



**ORDER CODE:**  
**M80-FB1XX68FI-XXXXL**

TOTAL No. OF CONTACTS: \_\_\_\_\_ DIM 'D' LENGTH: \_\_\_\_\_  
 04 TO 50      0060 = 60mm MIN  
 (EVEN NUMBERS ONLY)      9999 = 9999mm MAX  
 (SEE TABLE FOR EXAMPLES)

RTP	2	30.04.21	30101
NAME	ISS.	DATE	CN/CO
APPROVED: R.PORTLOCK			
CHECKED: R.ALEXANDER			
DRAWN: R.ALEXANDER			
CUSTOMER REF.:			
ASSEMBLY DRG:			

 www.harwin.com technical@harwin.com	THIS DRAWING AND ANY INFORMATION OR DESCRIPTIVE MATTER SET OUT HEREON ARE CONFIDENTIAL AND COPYRIGHT PROPERTY OF THE HARWIN GROUP AND MUST NOT BE DISCLOSED, LOANED, COPIED OR USED FOR MANUFACTURING, TENDERING OR FOR ANY OTHER PURPOSE WITHOUT THEIR WRITTEN PERMISSION.	TOLERANCES X. = ±1mm X.X = ±0.50mm X.XX = ±0.20mm X.XXX = ±0.01mm  ANGLES = ±5° UNLESS STATED	MATERIAL: SEE ABOVE	TITLE: M80 FEMALE T-CONTACT SINGLE-ENDED CABLE ASSEMBLY WITH SLOTTED JACKSCREWS  DRAWING NUMBER: <b>M80-FB1XX68FI-XXXXL</b>	SHT 2 OF 2
			FINISH: SEE ABOVE S/AREA: mm <sup>2</sup>		