

# Customer Information Sheet

DRAWING No.: M80-68110XXR

SHEET 2 OF 2

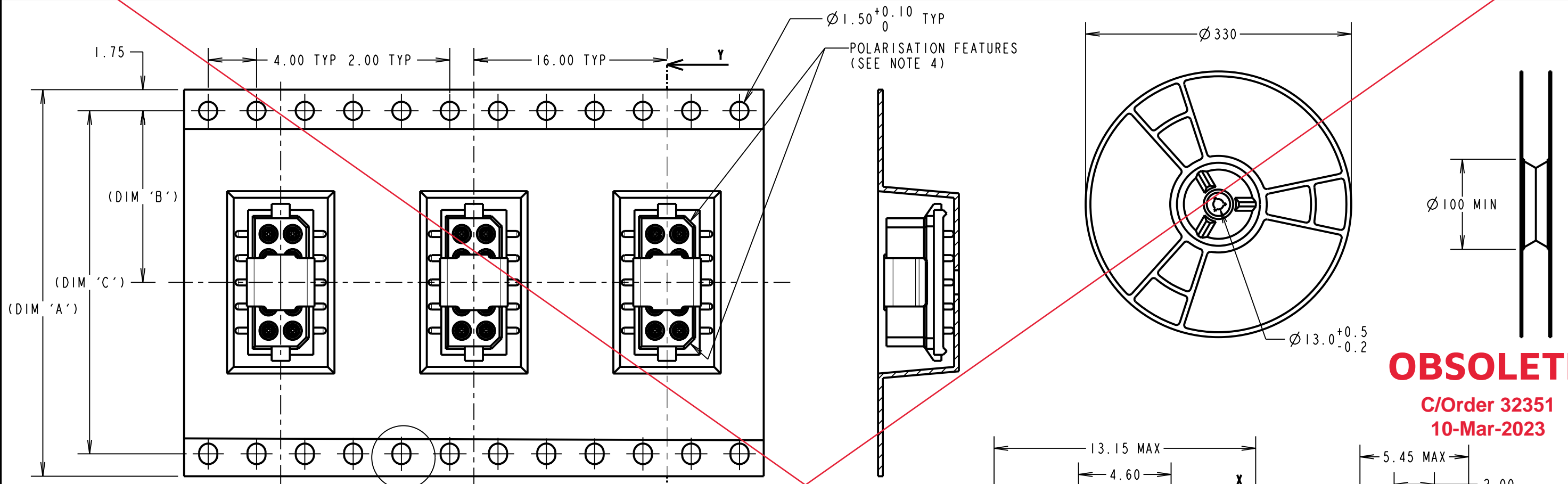
IF IN DOUBT - ASK

(C)

NOT TO SCALE

THIRD ANGLE PROJECTION

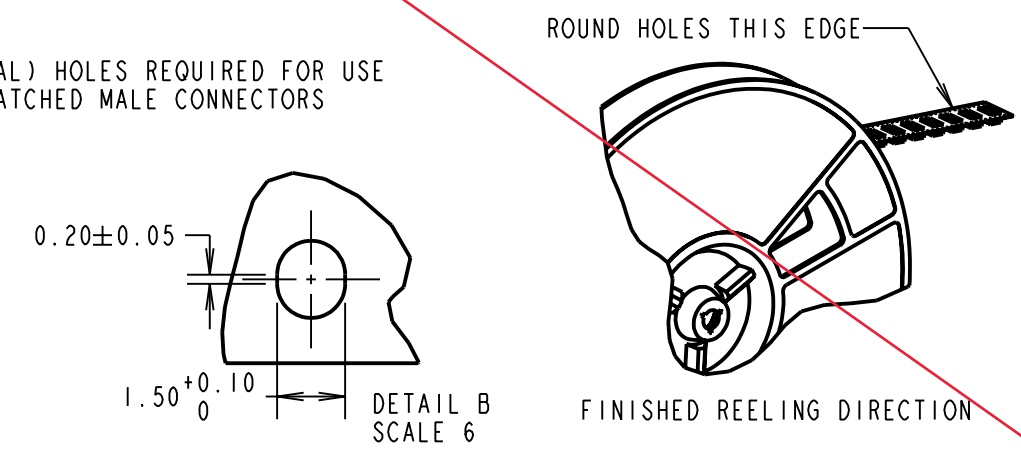
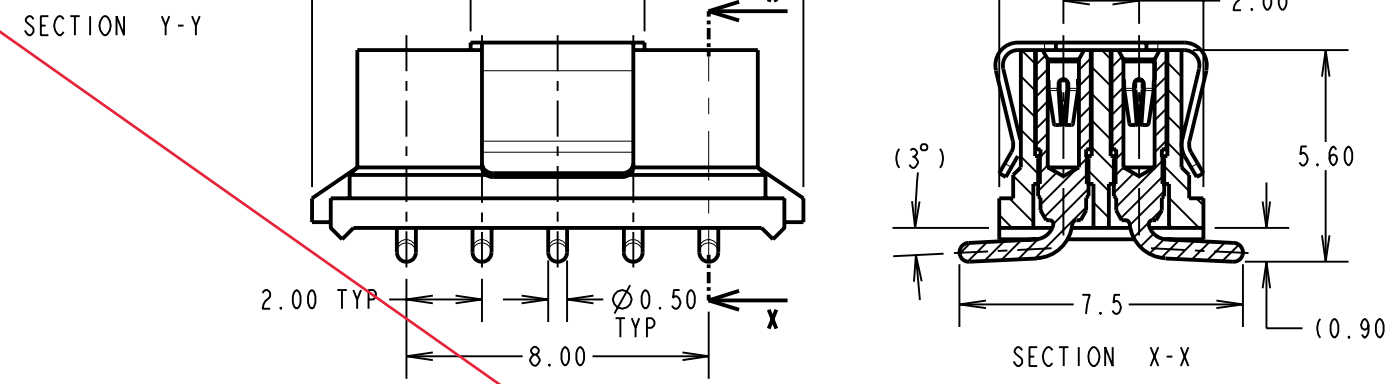
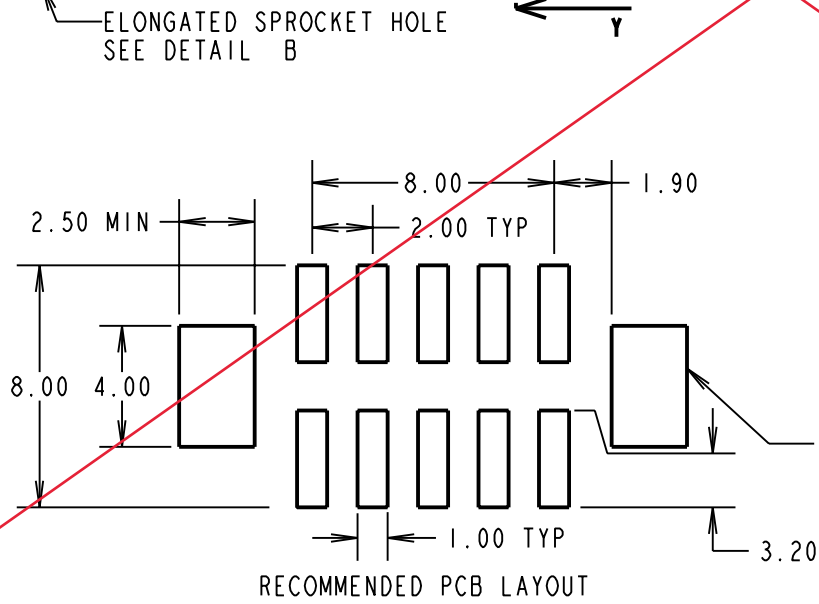
ALL DIMENSIONS IN mm



**OBSOLETE**

C/Order 32351  
10-Mar-2023

**SPECIFICATIONS:**  
**MATERIAL:**  
 MOULDING = GLASS-FILLED POLYAMIDE 46, UL94V-0, BLACK  
 CONTACT CLIP = BERYLLIUM COPPER  
 CONTACT SHELL = BRASS  
 PICK & PLACE CAP = PHOSPHOR BRONZE  
**FINISH:**  
 01 = 0.3µ GOLD CLIP, 3.5µ 90/10 TIN/LEAD BODY  
 42 = 0.3µ GOLD CLIP, 4µ 100% TIN SHELL  
 45 = 0.75µ 100% GOLD  
**ELECTRICAL:**  
 CURRENT RATING AT 25°C = 3.0A MAX  
 CURRENT RATING AT 85°C = 2.2A MAX  
 WORKING VOLTAGE = 120V AC/DC  
 VOLTAGE PROOF = 360V AC/DC  
 CONTACT RESISTANCE = 25 mΩ MAX  
 INSULATION RESISTANCE = 100 MΩ MIN  
**MECHANICAL:**  
 DURABILITY = 500 OPERATIONS  
 INSERTION FORCE = 2.8N MAX, 1.0N MIN  
 WITHDRAWAL FORCE = 1.8N MAX, 0.2N MIN  
**ENVIRONMENTAL:**  
 TEMPERATURE RANGE = -55°C TO +125°C



REELED PART No.	LOOSE PART No.	DIM 'A'	DIM 'B'	DIM 'C'	FINISH
M80-6811042R	M80-6811042P	(32.0±0.3)	(14.20±0.15)	(28.40)	100% TIN
M80-6811001R	M80-6811001P				GOLD CLIP, TIN/LEAD SHELL
M80-6811045R	M80-6811045P				100% GOLD

**NOTES:**  
 1. QUANTITY OF COMPONENTS PER REEL = 400.  
 2. THIS PRODUCT IS TAPED AND REELED IN ACCORDANCE WITH EIA-481-2-A (ELECTRONIC INDUSTRIES ASSOCIATION).  
 3. FOR COMPLETE SPECIFICATION, SEE COMPONENT SPECIFICATION C005XX (LATEST ISSUE).  
 4. COMPONENTS ARE ORIENTATED IN TAPE POCKETS SO THAT THE POLARISING FEATURES ARE FACING TOWARDS THE FREE END.

**HARWIN**

HARWIN USA TEL: 603 893 5376 FAX: 603 893 5396 mis@harwin.com	HARWIN Europe (UK) TEL: 023 9231 4545 FAX: 023 9231 4590 mis@harwin.co.uk	HARWIN Asia TEL: +65 6 779 4909 FAX: +65 6 779 3868 mis@harwin.com.sg
--	--	--

THIS DRAWING AND ANY INFORMATION OR DESCRIPTIVE MATTER SET OUT HEREON ARE CONFIDENTIAL AND COPYRIGHT PROPERTY OF THE HARWIN GROUP AND MUST NOT BE DISCLOSED, LOANED, COPIED OR USED FOR MANUFACTURING, TENDERING OR FOR ANY OTHER PURPOSE WITHOUT THEIR WRITTEN PERMISSION.

**TOLERANCES**  
 X. = ±1mm  
 X.X = ±0.25mm  
 X.XX = ±0.10mm  
 X.XXX = ±0.01mm  
**ANGLES = ±5°**  
 UNLESS STATED

**MATERIAL:**  
**FINISH:**  
**S/AREA:** mm<sup>2</sup>

**TITLE:** DATAMATE DIL VERTICAL SMT SOCKET ASSEMBLY (TAPE AND REELED)  
**DRAWING NUMBER:** M80-68110XXR  
 SHT 2 OF 2

SM	D	14.06.10	10832
NAME	ISS.	DATE	C/NOTE
APPROVED: S. MCCULLAGH			
CHECKED: R. ADDE			
DRAWN: R. ADDE			
CUSTOMER REF.:			
ASSEMBLY DRG:			