

Customer Information Sheet

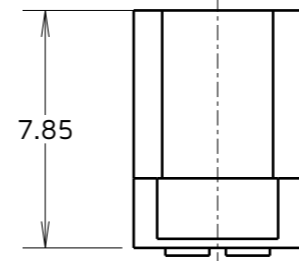
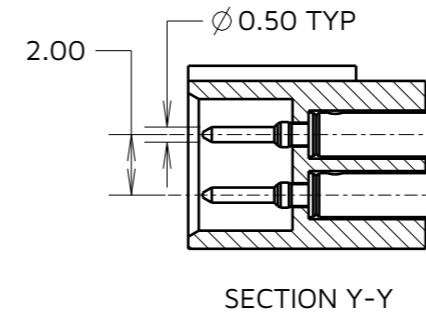
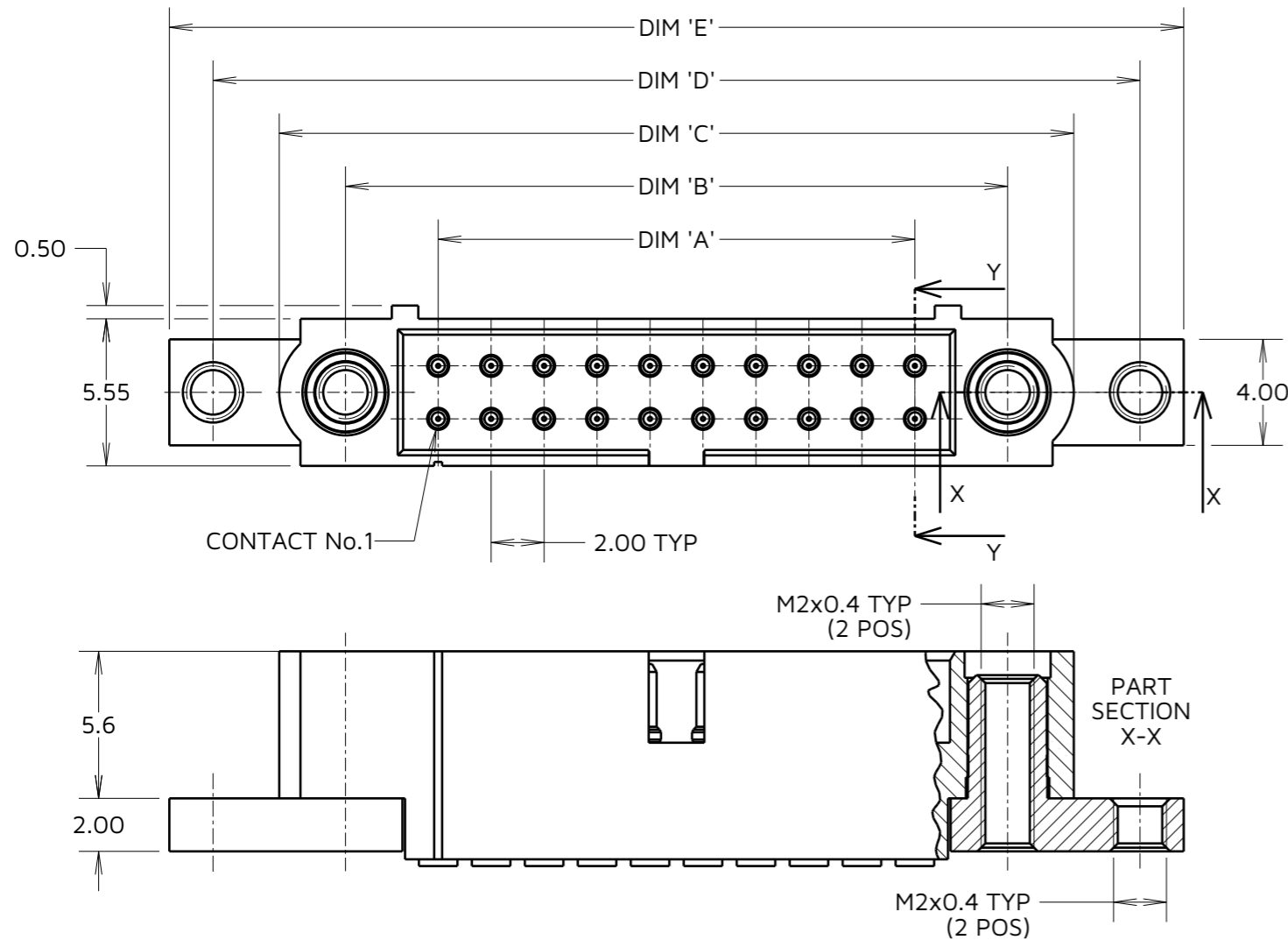
IF IN DOUBT - ASK

©

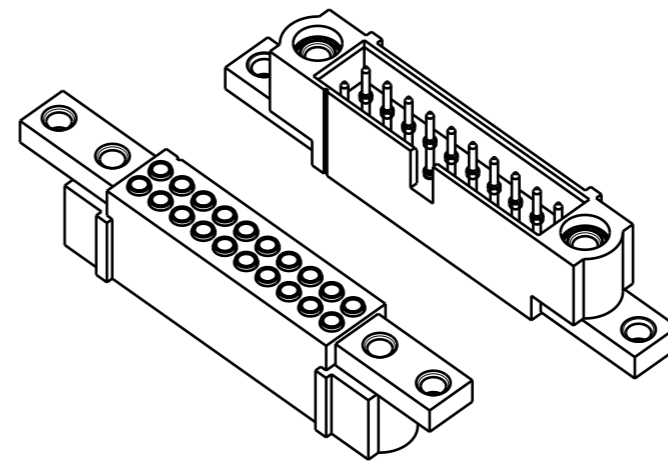
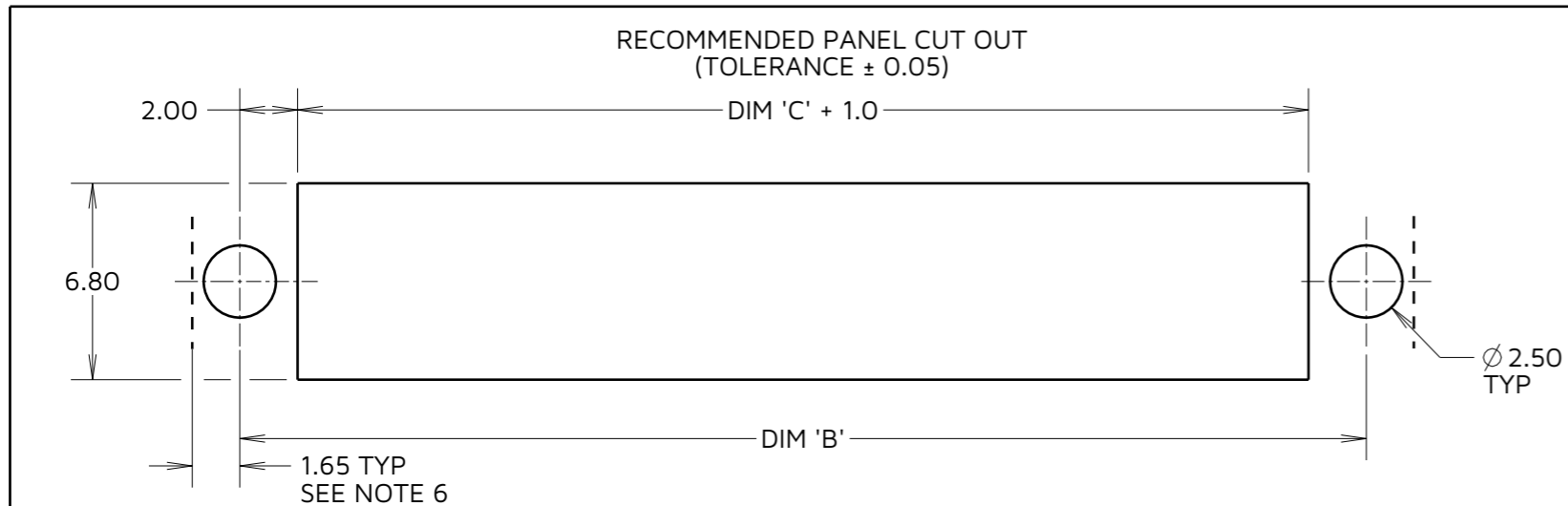
NOT TO SCALE

THIRD ANGLE PROJECTION

ALL DIMENSIONS IN mm



PART No.	DIM 'A'	DIM 'B'	DIM 'C'	DIM 'D'	DIM 'E'
M80-5C10405MU	2.00	9.00	14.00	19.00	22.30
M80-5C10605MU	4.00	11.00	16.00	21.00	24.30
M80-5C10805MU	6.00	13.00	18.00	23.00	26.30
M80-5C11005MU	8.00	15.00	20.00	25.00	28.30
M80-5C11205MU	10.00	17.00	22.00	27.00	30.30
M80-5C11405MU	12.00	19.00	24.00	29.00	32.30
M80-5C11605MU	14.00	21.00	26.00	31.00	34.30
M80-5C11805MU	16.00	23.00	28.00	33.00	36.30
M80-5C12005MU	18.00	25.00	30.00	35.00	38.30
M80-5C12205MU	20.00	27.00	32.00	37.00	40.30
M80-5C12405MU	22.00	29.00	34.00	39.00	42.30
M80-5C12605MU	24.00	31.00	36.00	41.00	44.30
M80-5C12805MU	26.00	33.00	38.00	43.00	46.30
M80-5C13005MU	28.00	35.00	40.00	45.00	48.30
M80-5C13205MU	30.00	37.00	42.00	47.00	50.30
M80-5C13405MU	32.00	39.00	44.00	49.00	52.30
M80-5C13605MU	34.00	41.00	46.00	51.00	54.30
M80-5C13805MU	36.00	43.00	48.00	53.00	56.30
M80-5C14005MU	38.00	45.00	50.00	55.00	58.30
M80-5C14205MU	40.00	47.00	52.00	57.00	60.30
M80-5C14405MU	42.00	49.00	54.00	59.00	62.30
M80-5C14605MU	44.00	51.00	56.00	61.00	64.30
M80-5C14805MU	46.00	53.00	58.00	63.00	66.30
M80-5C15005MU	48.00	55.00	60.00	65.00	68.30



SPECIFICATIONS:
MATERIAL:
 HOUSING = GLASS-FILLED PPS, UL94V-0, BLACK
 CONTACT = BRASS
 JACKSCREW & BOARDMOUNT = STAINLESS STEEL
FINISH:
 CONTACT = GOLD
PACKING:
 BAG
 FOR COMPLETE SPECIFICATION, SEE COMPONENT SPECIFICATION C005XX (LATEST ISSUE)

- NOTES:**
- CONNECTORS ARE SUPPLIED WITH CONTACTS LOOSE.
 - FOR EXTRA CONTACTS, USE PART NUMBER M80-1950005 (24-28 AWG).
 - FOR MECHANICAL AND ELECTRICAL SPECIFICATION SEE COMPONENT SPECIFICATION C005XX (LATEST ISSUE).
 - RECOMMENDED WIRE TYPE SEE C049 COMPONENT SPECIFICATION.
 - RECOMMENDED HAND CRIMP TOOL = M22520/2-01 WITH INSTRUCTION SHEET IS-01 FOR COMPLETE CRIMPING INSTRUCTIONS. CONTACT INSERTION & EXTRACTION TOOL = Z80-280. REFER TO TOOLING INSTRUCTION SHEET IS-25 FOR ASSEMBLY INSTRUCTIONS.
 - CLEARANCE REQUIRED BEHIND PANEL FOR HARDWARE, SEE PANEL CUT OUT.
 - RECOMMENDED HEX SCREW FOR MOUNTING ON PANELS UP TO 3mm MAX THICKNESS: M80-2320000B
 - PART M80-5C12005MU SHOWN FOR ILLUSTRATION ONLY

ORDER CODE:
M80-5C1XX05MU
 TOTAL No. OF CONTACTS _____
 04 TO 50 (EVEN NUMBERS ONLY)

JD	2	11.09.24	34310
NAME	ISS.	DATE	CN/CO
APPROVED: J.DEAN			
CHECKED: A.YEOMANS			
DRAWN: R.ALEXANDER			



TOLERANCES
 X. = ±1mm
 X.X = ±0.50mm
 X.XX = ±0.20mm
 X.XXX = ±0.01mm
 ANGLES = ±5°
 UNLESS STATED

THIS DRAWING AND ANY INFORMATION OR DESCRIPTIVE MATTER SET OUT HEREON ARE CONFIDENTIAL AND COPYRIGHT PROPERTY OF THE HARWIN GROUP AND MUST NOT BE DISCLOSED, LOANED, COPIED OR USED FOR MANUFACTURING, TENDERING OR FOR ANY OTHER PURPOSE WITHOUT THEIR WRITTEN PERMISSION.

MATERIAL:
 SEE ABOVE

TITLE: DATAMATE J-TEK MALE CRIMP ASSY (SMALL BORE) WITH REAR PANEL MOUNT JACKSCREW
DRAWING NUMBER: M80-5C1XX05MU
 SHT 3 OF 3