

Customer Information Sheet

DRAWING No.: M80-4C1XXXXSI

SHEET 2 OF 2

IF IN DOUBT - ASK

©

NOT TO SCALE

THIRD ANGLE PROJECTION

ALL DIMENSIONS IN mm

SPECIFICATIONS:

MATERIAL:

MOULDING = GLASS-FILLED PPS, UL94V-0, BLACK
CONTACT CLIP = BERYLLIUM COPPER
CONTACT SHELL = BRASS
BACKSHELL = ALUMINIUM ALLOY
BANDIT TIE & J/SCREW = STAINLESS STEEL

FINISH:

CONTACTS
05 = 0.3µ GOLD CLIP, 0.25-0.3µ GOLD SHELL
42 = 0.3µ GOLD CLIP, 3.5-5.0µ 100% TIN SHELL
OVER NICKEL
BACKSHELL = NICKEL

ELECTRICAL:

RF ATTENUATION = 10kHz TO 400MHz @ >30dBs
IN GENERAL ACCORDANCE WITH MIL STD 1377 (1971)
CURRENT RATING AT 25°C = 3.0A MAX
CURRENT RATING AT 85°C = 2.2A MAX
WORKING VOLTAGE = 120V AC/DC
VOLTAGE PROOF = 360V AC/DC
CONTACT RESISTANCE = 25 mΩ MAX
INSULATION RESISTANCE = 100 MΩ MIN

MECHANICAL:

INSERTION FORCE (Ø0.5mm GAUGE) = 2.8N MAX
WITHDRAWAL FORCE (Ø0.5mm GAUGE) = 0.2N MIN
ENVIRONMENTAL:
TEMPERATURE RANGE = -55°C TO +121°C

PACKING:

SEE NOTES
FOR COMPLETE SPECIFICATION, SEE COMPONENT
SPECIFICATION C005XX (LATEST ISSUE) AND C042XX
(LATEST ISSUE)

NOTES:

- CONNECTOR IS SUPPLIED AS A KIT OF PARTS IN A BAG.
BAGS WILL BE BULK PACKED INTO BOXES.
- FOR EXTRA CONTACTS, USE PART No.'s.
M80-0130001 FOR M80-4C1XX42SI
M80-0130005 FOR M80-4C1XX05SI
- FOR M80-4C1XXXXSI THE RECOMMENDED WIRE
TYPE = BS 3G 210 TYPE A, PTFE INSULATED
24-28 AWG. MAX INSULATION DIAMETER = Ø1.10mm,
STRIP WIRE BY 2.00mm.
- RECOMMENDED HAND CRIMP TOOL FOR ALL CONTACTS =
M22520/2-01 WITH POSITIONER T5747.
- CONTACT INSERTION & EXTRACTION TOOL = Z80-280.
- TO APPLY CIRCLIPS USE HARWIN TOOL = Z80-300.
- SEE TOOLING INSTRUCTION SHEET IS-32 FOR ASSEMBLY
DETAILS AVAILABLE AT:
<http://www.harwin.com/downloads/instructions/>
- 1 BANDIT TIE SUPPLIED PER KIT

ORDER CODE:

M80-4C1XXXXSI

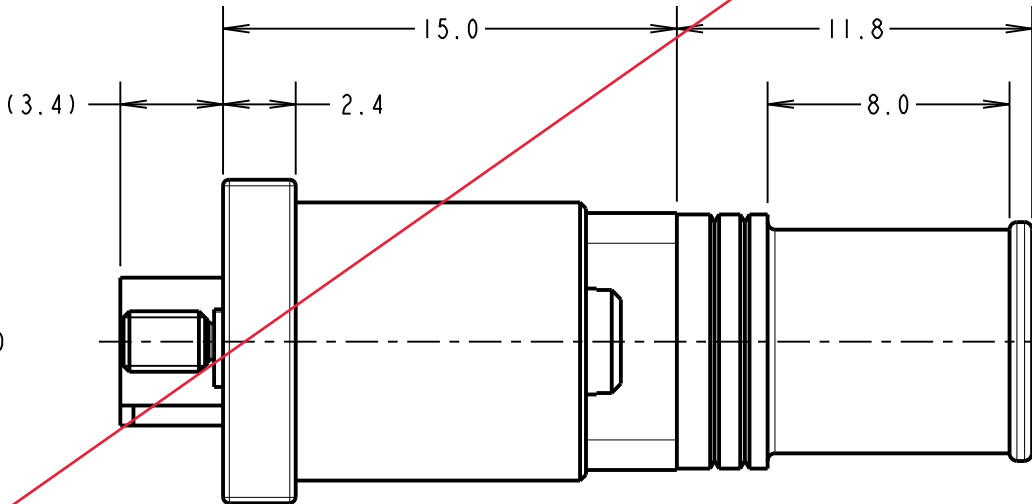
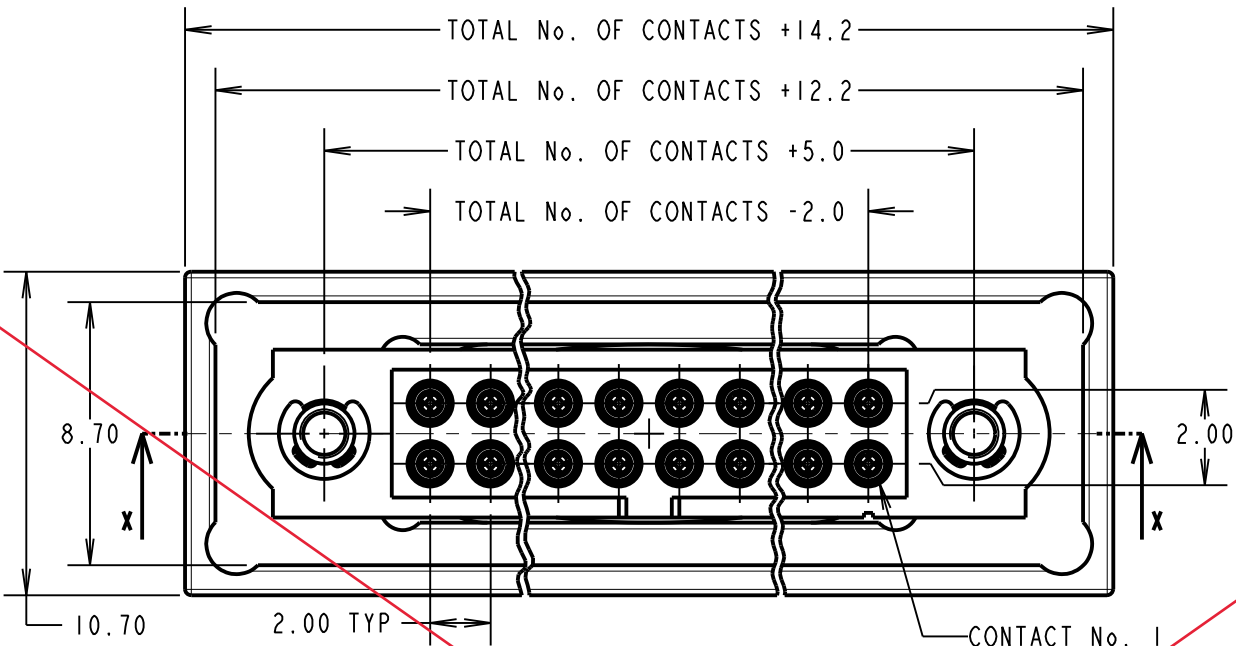
TOTAL No. OF CONTACTS
06, 10, 14, 20, 26

FINISH CODE

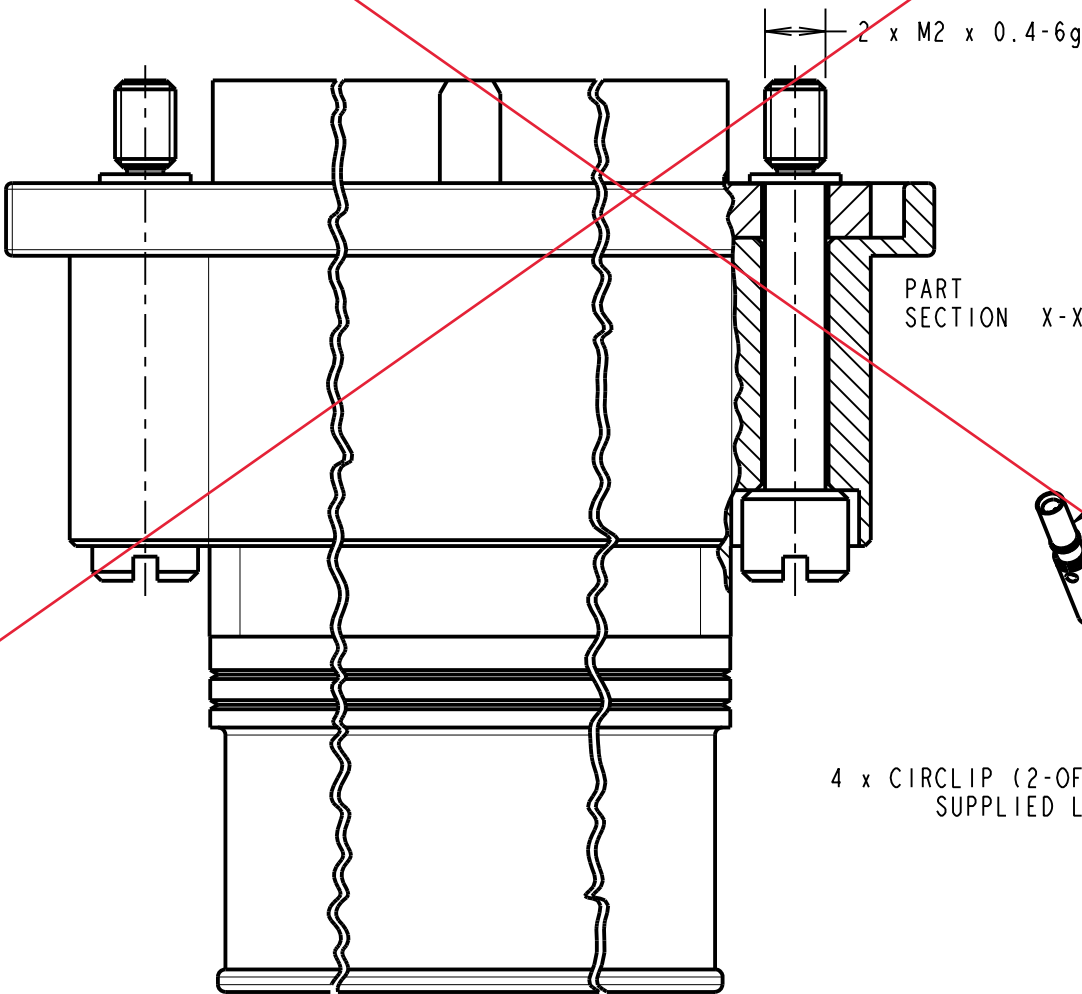
05 - GOLD CLIP, GOLD SHELL
42 - GOLD CLIP, 100% TIN OVER NICKEL SHELL

EXAMPLE ORDER CODE: CONNECTOR WITH 20 SMALL BORE
SIGNAL CONTACTS, GOLD CLIP AND GOLD SHELL

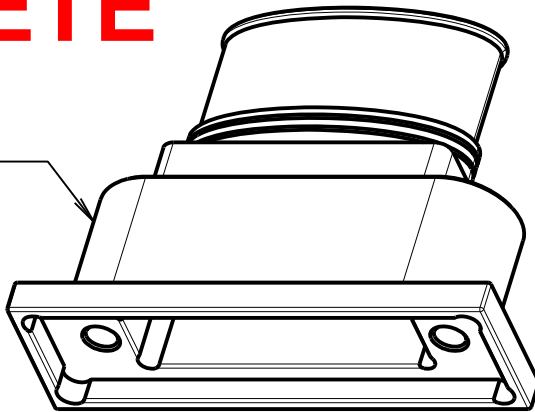
M80-4C12042SI



OBSOLETE



1 x METAL BACKSHELL
SUPPLIED LOOSE IN BAG

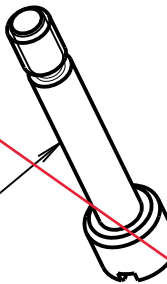


CONTACTS (QTY = TOTAL No. OF CONTACTS)



4 x CIRCLIP (2-OFF REQUIRED)
SUPPLIED LOOSE IN BAG
SEE NOTE 6

2 x M2 SLOTTED JACKSCREWS
SUPPLIED LOOSE IN BAG



SB	4	15.03.11	11172
NAME	ISS.	DATE	C/NOTE
APPROVED: S.BENNETT			
CHECKED: S.FLOWER			
DRAWN: S.FLOWER			
CUSTOMER REF.:			
ASSEMBLY DRG:			

HARWIN

HARWIN USA
TEL: 603 893 5376
FAX: 603 893 5396
mis@harwin.com

HARWIN Europe (UK)
TEL: 023 9231 4545
FAX: 023 9231 4590
mis@harwin.co.uk

HARWIN Asia
TEL: +65 6 779 4909
FAX: +65 6 779 3868
mis@harwin.com.sg

THIS DRAWING AND ANY
INFORMATION OR DESCRIPTIVE
MATTER SET OUT HEREON ARE
CONFIDENTIAL AND COPYRIGHT
PROPERTY OF THE HARWIN
GROUP AND MUST NOT BE
DISCLOSED, LOANED, COPIED
OR USED FOR MANUFACTURING,
TENDERING OR FOR ANY
OTHER PURPOSE WITHOUT
THEIR WRITTEN PERMISSION.

TOLERANCES
X. = ±1mm
X.X = ±0.25mm
X.XX = ±0.10mm
X.XXX = ±0.01mm
ANGLES = ±5°
UNLESS STATED

MATERIAL:

SEE ABOVE

FINISH:

SEE ABOVE

S/AREA:

mm²

TITLE: DATAMATE J-TEK
FEMALE CRIMP (SMALL BORE) ASSY
WITH METAL BACKSHELL

DRAWING NUMBER:

M80-4C1XXXXSI

SHT
2 OF 2