

# Customer Information Sheet

DRAWING No.: M80-25600XX & M80-25700XX SHT 3 OF 3

IF IN DOUBT - ASK

©

NOT TO SCALE

THIRD ANGLE PROJECTION

ALL DIMENSIONS IN mm

## SPECIFICATION:

MATERIAL:  
BERYLLIUM COPPER

FINISH (ALL OVER NICKEL):  
45 = 0.76µ MIN GOLD, ALL OVER  
42 = SELECTIVE 3µ MIN 100% TIN AND 0.76µ MIN GOLD

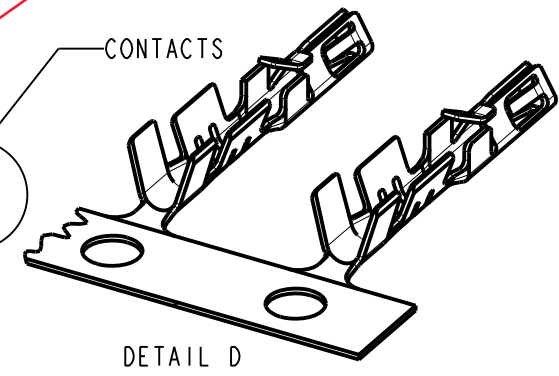
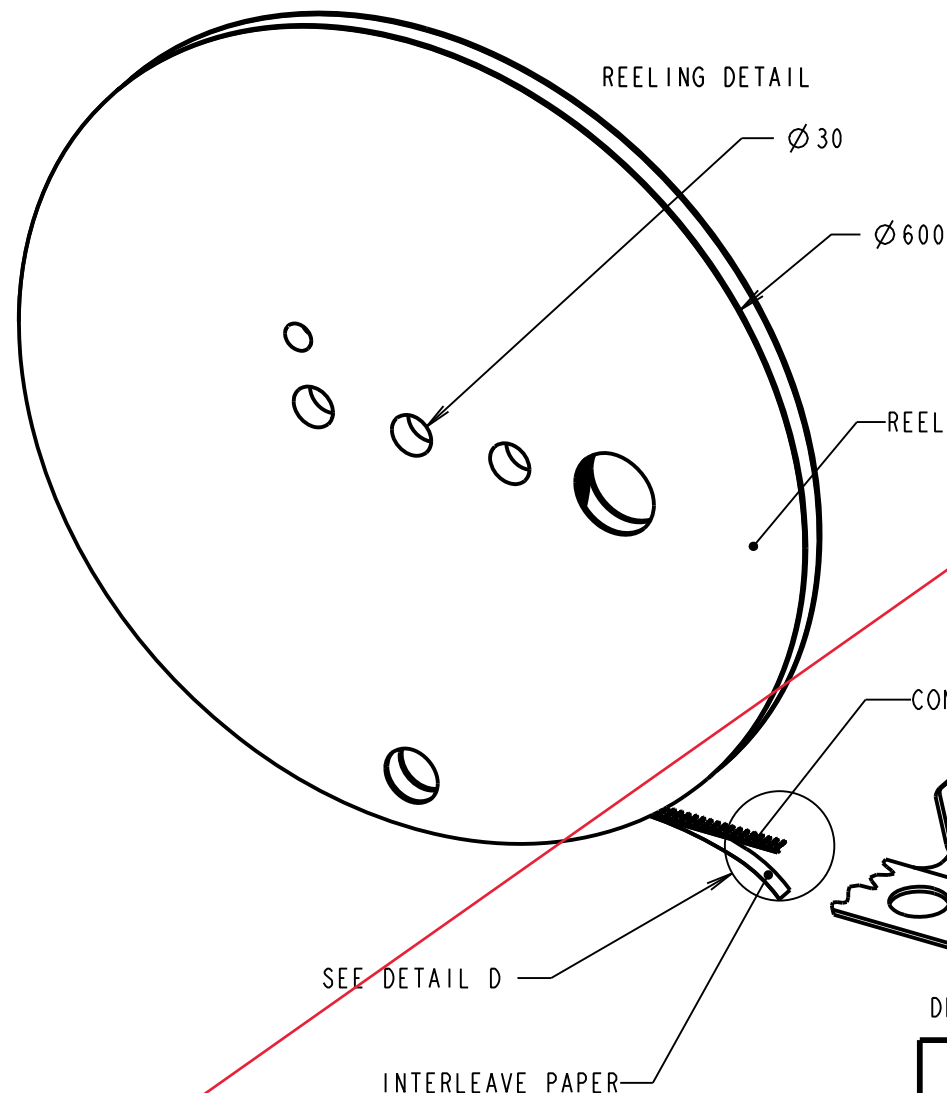
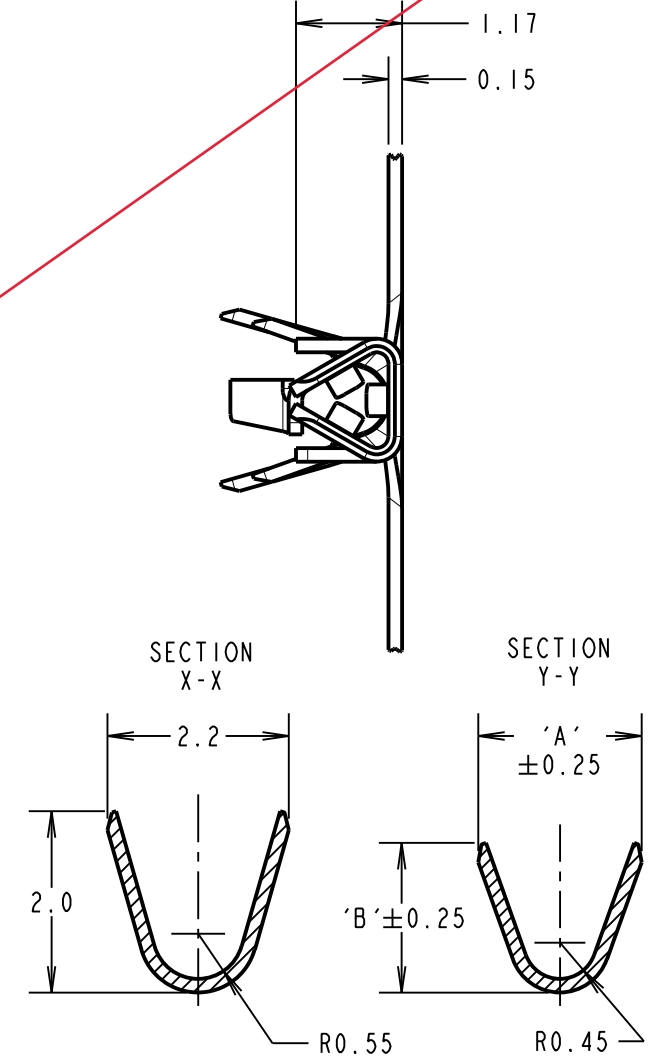
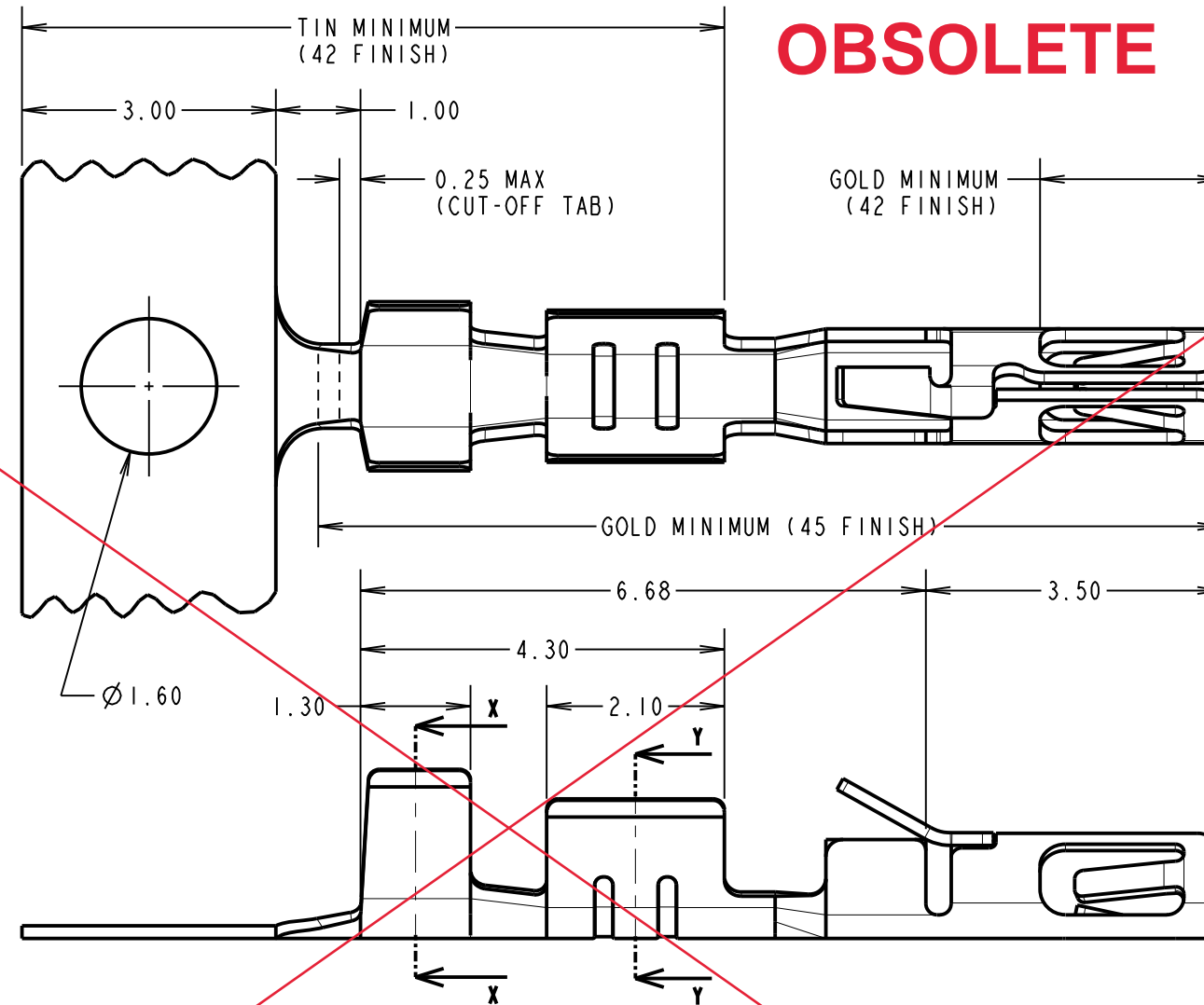
MECHANICAL:  
INSERTION FORCE = 2.8N MAX, 1.0N MIN  
WITHDRAWAL FORCE = 1.8N MAX, 0.2N MIN  
DURABILITY = 400 OPERATIONS

ENVIRONMENTAL:  
OPERATING TEMPERATURE = -55°C TO +125°C

PACKING:  
REEL (AS SHOWN), 15K/REEL

FOR COMPLETE CONNECTOR SPECIFICATION, SEE  
COMPONENT SPECIFICATION C040XX (LATEST ISSUE)

**OBSOLETE**



### NOTES:

- TO BE USED WITH THE FOLLOWING FEMALE HOUSING:  
M80-454XX98 = HOUSING ONLY  
M80-455XX98 = HOUSING + SLOTTED JACKSCREW  
M80-456XX98 = HOUSING + HEX SOCKET JACKSCREW  
M80-457XX98 = HOUSING + REVERSE FIX JACKSCREW  
M80-458XX98 = HOUSING + GUIDE AND BOARD MOUNT  
M80-459XX98 = HOUSING + 101LOK JACKSCREW
- SUITABLE FOR PTFE INSULATED EQUIPMENT WIRE TO BS 3G 210 TYPE A, WIRE 22-28 AWG, WIRE INSULATION Ø0.6mm-Ø1.1mm.
- STRIP WIRE BY 2.5-3.0mm FOR CRIMPING.
- RECOMMENDED CRIMP HEIGHTS:  
0.76-0.82mm FOR 22-24 AWG CONTACTS  
0.50-0.56mm FOR 26-28 AWG CONTACTS
- SUITABLE FOR PROCESSING WITH LEFT SIDE FEED CRIMPING PRESS. CONTACT [datamate@harwin.com](mailto:datamate@harwin.com) FOR DETAILS.
- CONTACTS ARE AVAILABLE LOOSE, PART NUMBER M80-29600XX FOR 24-22 AWG WIRE AND M80-29700XX FOR 28-26 AWG WIRE, SUITABLE FOR PROCESSING WITH HAND CRIMP TOOL Z80-255.

PART No.	DIMENSION	
	'A'	'B'
M80-25600XX	1.80	1.65
M80-25700XX	1.34	1.00

ORDER CODE: **M80-XXX00XX**

WIRE SIZE: \_\_\_\_\_  
256 = 24-22 AWG (0.22-0.34mm<sup>2</sup>)  
257 = 28-26 AWG (0.08-0.12mm<sup>2</sup>)

FINISH: \_\_\_\_\_  
45 = GOLD, ALL OVER  
42 = 100% TIN & GOLD, SELECTIVE

SM	3	15.11.11	11542
NAME	ISS.	DATE	C/NOTE
APPROVED: S. MCCULLAGH			
CHECKED: M. G. PLESTED			
DRAWN: MARK G PLESTED			
CUSTOMER REF.:			
ASSEMBLY DRG:			

**HARWIN**

[www.harwin.com](http://www.harwin.com)  
[technical@harwin.com](mailto:technical@harwin.com)

THIS DRAWING AND ANY INFORMATION OR DESCRIPTIVE MATTER SET OUT HEREON ARE CONFIDENTIAL AND COPYRIGHT PROPERTY OF THE HARWIN GROUP AND MUST NOT BE DISCLOSED, LOANED, COPIED OR USED FOR MANUFACTURING, TENDERING OR FOR ANY OTHER PURPOSE WITHOUT THEIR WRITTEN PERMISSION.

TOLERANCES  
X. = ±1mm  
X.X = ±0.25mm  
X.XX = ±0.10mm  
X.XXX = ±0.01mm  
ANGLES = ±5°  
UNLESS STATED

MATERIAL:  
SEE ABOVE  
FINISH: SEE ABOVE  
S/AREA: mm<sup>2</sup>

TITLE: DATAMATE TRIO-TEK  
FEMALE CRIMP CONTACT REELED  
24-22 AWG & 28-26 AWG

DRAWING NUMBER:  
**M80-25600XX & M80-25700XX**

SHT  
3  
OF  
3