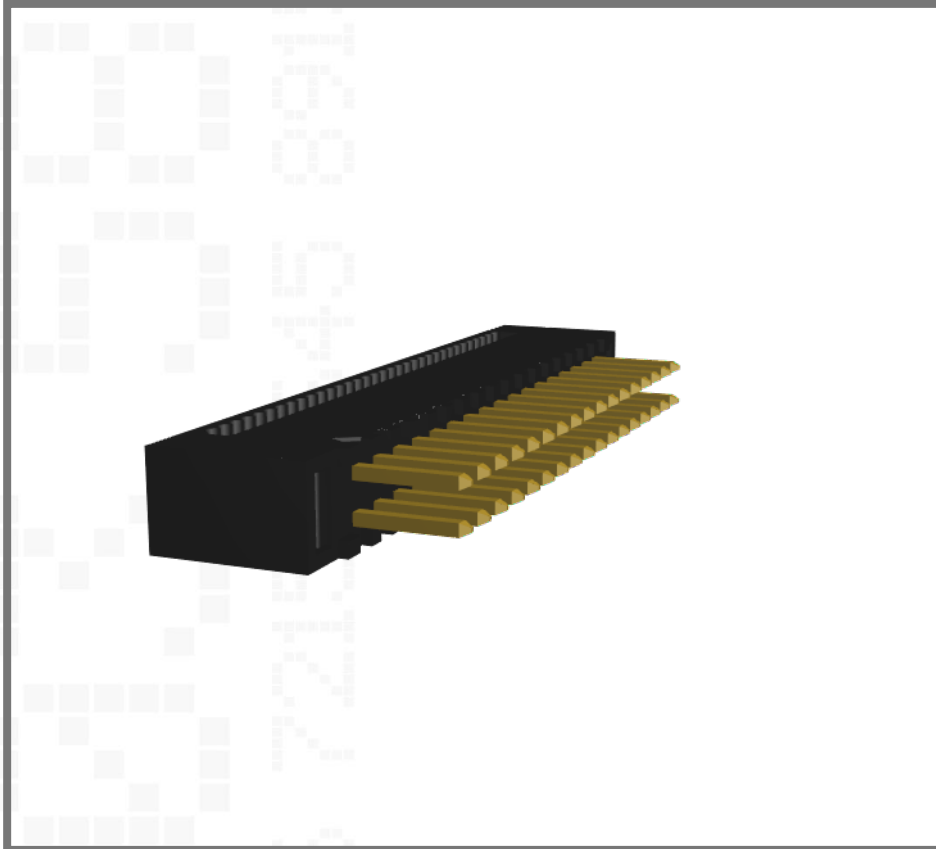


M50-3801742

1.27mm Pitch DIL Vertical Male IDC Cable Connector



Technical Drawing:

[M50-380.pdf](#)

Website:

[M50-3801742](#)

Component Specification:

[C029XX](#)

[Request an evaluation sample](#)

Dual row, suitable for 30AWG ribbon cable, Selective Gold & Tin, 17+17 contacts