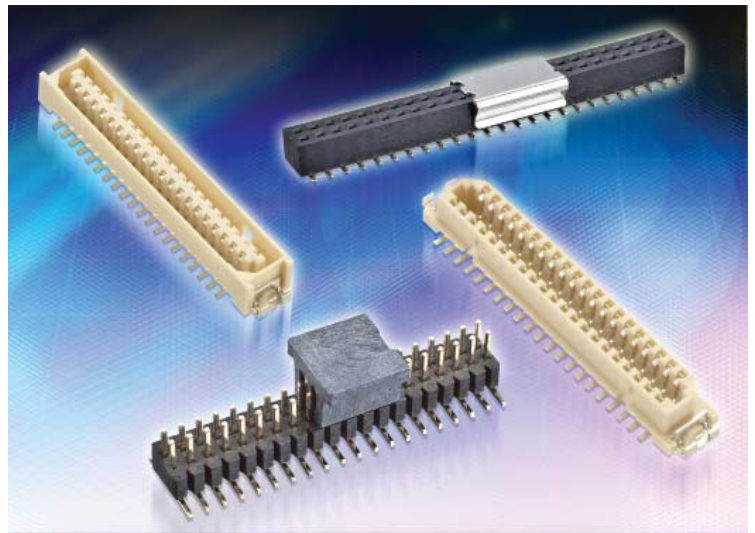


## 1.00mm Pitch Board to Board Connector Systems

- ❖ 2 ranges of miniature board to board connectors on a 1.00mm pitch.
- ❖ Low profile male & female and pin header & socket connectors.
- ❖ Surface Mount solder tails.
- ❖ RoHS and lead-free solder process compliant.
- ❖ Free samples available on-line at [www.harwin.com](http://www.harwin.com)



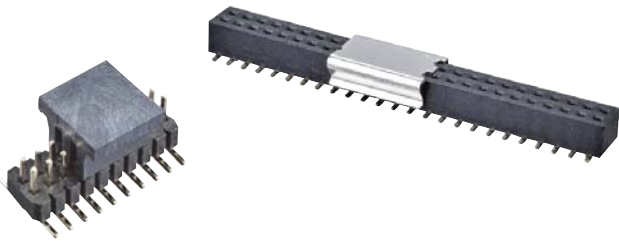
Available in tape and reel

# M40

[www.harwin.com](http://www.harwin.com)

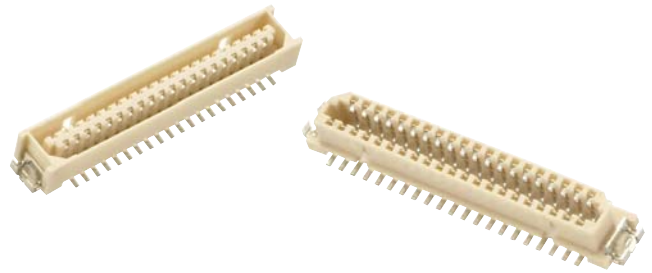
## M40 – 3XX

- DIL, Pin Header & Socket system for board to board interconnection.
- Twin beam construction for durability sensitive applications.
- 1A per contact current carrying capacity.
- 300 operations durability rating.
- Packed in Tape & Reel with pick and place caps for automated assembly.
- SMT connector featuring location pegs.



## M40 – 6XX

- DIL, low profile system for board to board interconnection.
- Staggered pin-out eases PCB layout.
- 0.5A per contact current carrying capacity.
- 30 operations durability rating.
- Packed in Tape & Reel with pick and place tape or in tubes.
- Solder tabs secure the connector to the PCB.



## Our Services

- Award winning service performance.
- Live on-line help.
- Rapid samples service.
- 24 hour quote turnaround.
- On-Line CAD Models.

[www.harwin.com](http://www.harwin.com)



## Applications



**Harwin North America**  
Salem, New Hampshire, USA  
E: [misboston@harwin.com](mailto:misboston@harwin.com)  
T: +1 603 893 5376

**Harwin Asia**  
Singapore  
E: [mis@harwin.com.sg](mailto:mis@harwin.com.sg)  
T: +65 6 779 4909

**Harwin Europe**  
Portsmouth, Hampshire, UK  
E: [mis@harwin.co.uk](mailto:mis@harwin.co.uk)  
T: +44 (0) 23 9237 0451

**HARWIN**

Email: [technical@harwin.co.uk](mailto:technical@harwin.co.uk)

Email: [samples@harwin.co.uk](mailto:samples@harwin.co.uk)

Website: [www.harwin.co.uk](http://www.harwin.co.uk)