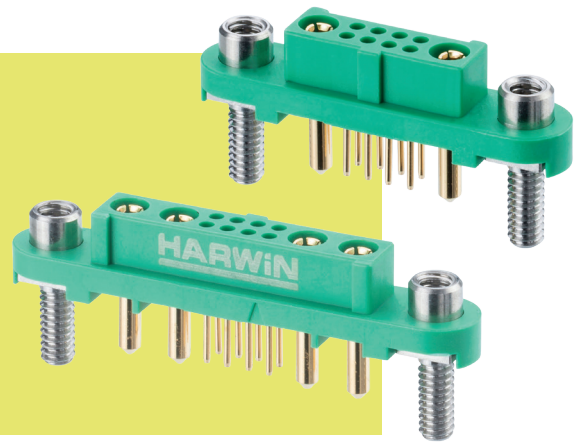


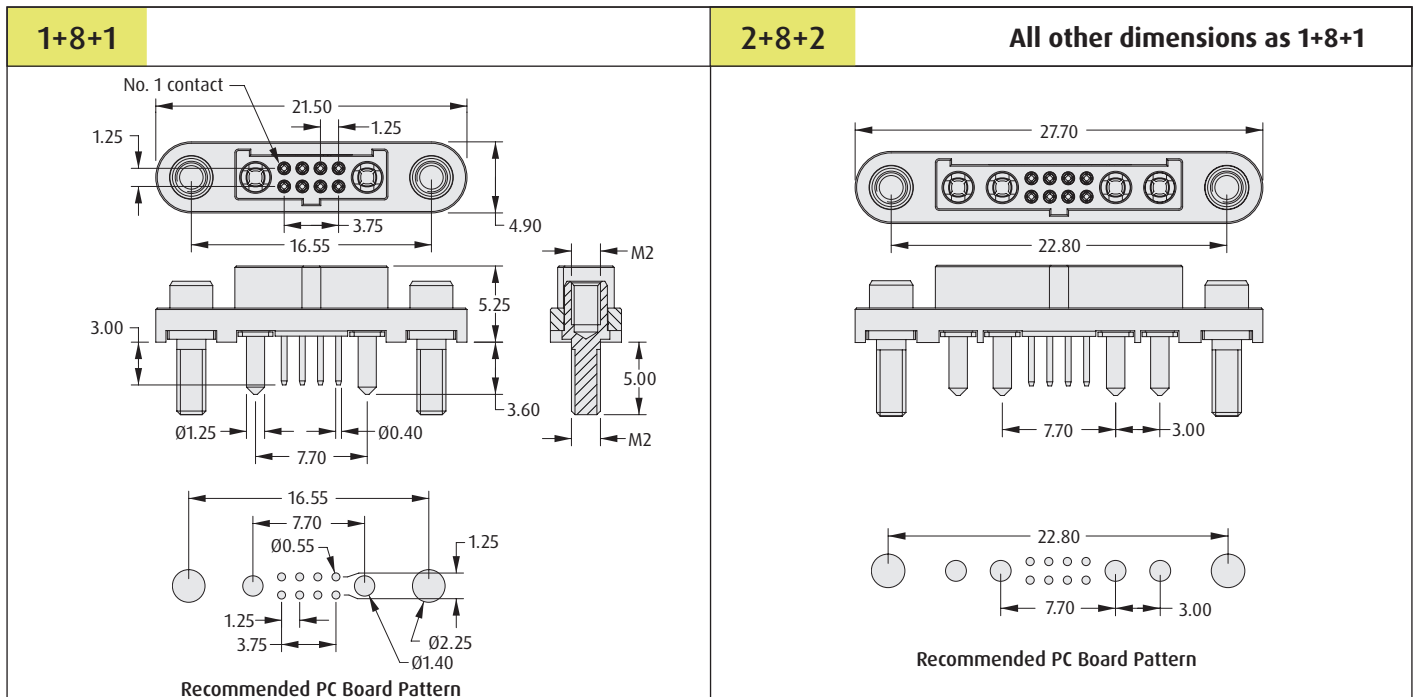
# Gecko-MT Connectors

## Female Vertical Throughboard – Reverse Fix

- Reverse fix screw-lok suitable for board-to-cable applications, where the female connector is located on the PCB.
- 2A current rating for signal contacts, 10A for power contacts.
- 4-finger Beryllium Copper contact design on both signal and power contacts.
- Order nuts for board-mount separately – see bottom of page for choice of nut type.



GECKO-MT



### HOW TO ORDER

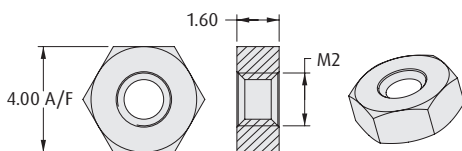
**G125 - FV1 08 05 F3 - XABXAB P**

<b>SERIES CODE</b>	G125 - FV1 08 05 F3 - XABXAB P	<b>PACKAGING</b>	P Tape & Reel strips
<b>TOTAL NO. OF SIGNAL CONTACTS</b>	8	<b>POWER CONTACTS</b>	1AB1AB 1+8+1 Configuration
<b>SCREW-LOK</b>	F3 Reverse Fix	2AB2AB 2+8+2 Configuration	

### REQUIRED HARDWARE

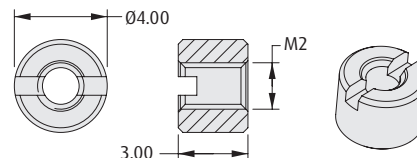
Order separately from connector

#### Hexagonal Board Mount Nut



**ORDER CODE**  
G125-4500000B

#### Slotted Board Mount Nut



**ORDER CODE**  
G125-4510000B

All dimensions in mm.

Patent Published