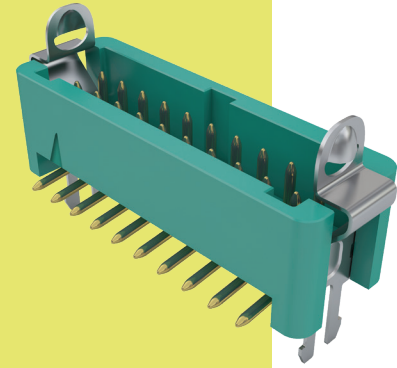


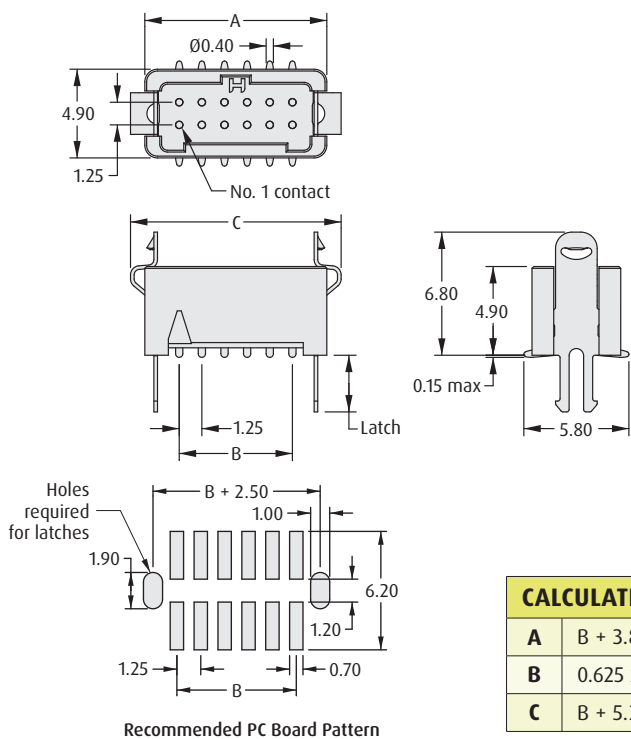
Gecko with Latches Connectors

Male Vertical Surface Mount

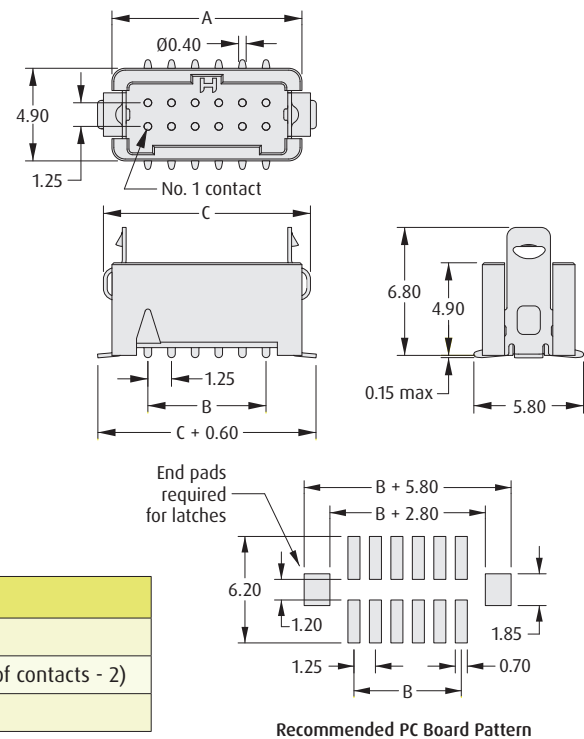
- Secure fixing to the PCB via hold-down tabs (SMT).
- Easy-to-release latches require no tooling.
- 2A current capacity, resists high vibration and shock.
- Withstands extremes of temperature: -65°C to +150°C.



THROUGHBOARD LATCH



SURFACE MOUNT LATCH



CALCULATION	
A	B + 3.8
B	0.625 x (Total No. of contacts - 2)
C	B + 5.2

HOW TO ORDER

G125 - M S1 XX 05 LX X

SERIES CODE	G125	PACKAGING	R Tape & Reeled P Tape & Reel strips
TYPE	S1 Surface Mount	LATCH	L0 No Latch L1 Latch for 1.6mm PCB L2 Latch for 2.4mm PCB L3 Surface Mount Latch
TOTAL NO. OF CONTACTS	06, 10, 12, 16, 20, 26, 34, 50		
FINISH	05 Gold		

All dimensions in mm.

Patent Published