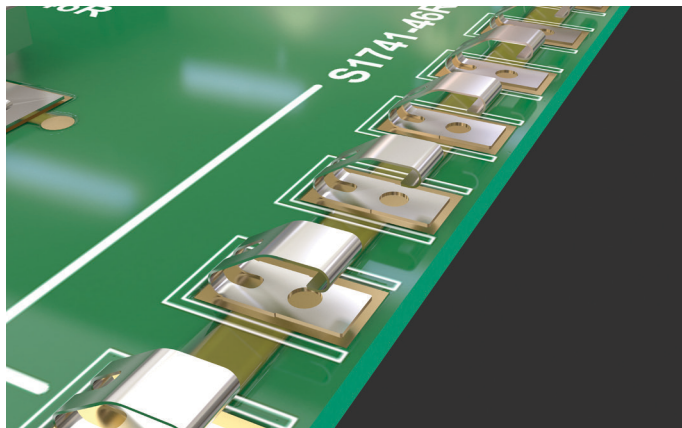
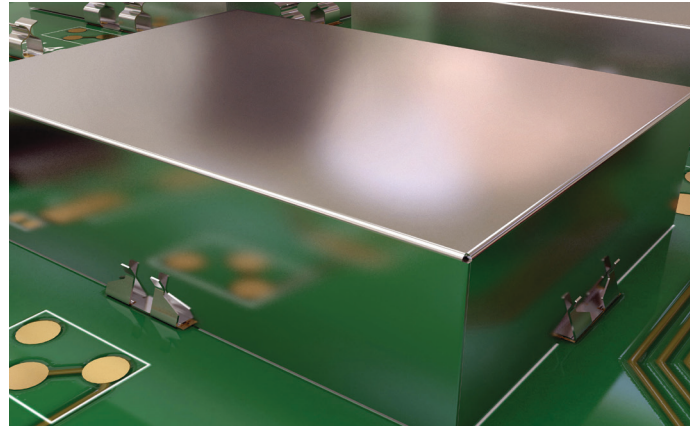


# EMC Shielding Introduction

Harwin provides a range of Surface Mount Shield Clips, compatible Shield Cans, and a comprehensive selection of Spring Contacts, to solve a variety of EMC/RFI and grounding issues.

The Harwin combination of SMT Clips and Cans provide a simple and cost-effective method of shielding vulnerable or EMI radiating board components.

- ❖ No secondary manual soldering operations - Shield Cans quickly and easily slot into Clips.
- ❖ Potential hot-spots from manual soldering eliminated.
- ❖ Rework now easy without a de-soldering operation.



Spring Contacts (also known as Shield Fingers, Antenna or Grounding Contacts) are available in a choice of finish and wide array of styles.

- ❖ Heights from 1.23mm to 7.25mm in a variety of spring forces.
- ❖ Ideal for antenna feeds in mobile devices, LED lamp connections, grounding metal devices or single signal connections.
- ❖ All contacts are SMT, supplied in Tape and Reel packaging for simplified automated assembly and low production costs.

## RFI Shield Clips Summary

❖ Further dimensional information on the Shield Clips is available on the following pages.

Part No.	Type	Shield Thickness	Material	Finish	Pack Qty. on Ø330mm reel	Insertion Force (max)	Withdrawal Force (min)
<b>S1411-46R</b>	Maxi	0.70-1.00mm	Beryllium Copper	Tin	1,900	7N	0.8N
<b>S1711-46R</b>	Midi	0.17-0.30mm	Beryllium Copper	Tin	1,900	4N	0.5N
<b>S2711-46R</b>	Midi	0.17-0.30mm	Cupro-Nickel (Beryllium-free)	Tin	1,900	4N	0.5N
<b>S0971-46R</b>	Mini	0.20-0.30mm	Stainless Steel	Tin	5,000	19.6N	0.98N
<b>S1721-46R</b>	Mini	0.13-0.23mm	Beryllium Copper	Tin	5,000	5N	0.35N
<b>S0941-46R</b>	Micro	0.15-0.20mm	Stainless Steel	Tin	10,000	9.8N	0.69N
<b>S0951-46R</b>	Micro	0.20mm	Stainless Steel	Tin	10,000	9.8N	0.69N
<b>S0961-46R</b>	Micro	0.15-0.20mm	Stainless Steel	Tin	10,000	24.5N	0.98N
<b>S0991-46R</b>	Micro	0.20-0.25mm	Stainless Steel	Tin	15,000	19.6N	0.98N
<b>S1001-46R</b>	Micro	0.15-0.20mm	Stainless Steel	Tin	20,000	19.6N	0.98N
<b>S0981-46R</b>	Corner	0.20-0.25mm	Stainless Steel	Tin	6,000	19.6N	0.98N