

# Gecko-SL Connectors

## Male Crimp Housing

- Features 2.5mm potting wall for extra security.
- No. 1 position identified on housing.
- 3 polarizing points on each housing prevent mis-mating.
- Housing without fixings can be used with G125-964xxF1 metal hoods / backshells for reverse fix screw-lok.
- Order nuts for panel mount separately - see bottom of page.



GECKO-SL

WITHOUT PANEL MOUNT	WITH PANEL MOUNT								
<table border="1"> <thead> <tr> <th colspan="2">CALCULATION</th> </tr> </thead> <tbody> <tr> <td><b>A</b></td> <td><math>B + 12.7</math></td> </tr> <tr> <td><b>B</b></td> <td><math>0.625 \times (\text{Total No. of contacts} - 2)</math></td> </tr> <tr> <td><b>C</b></td> <td><math>B + 7.8</math></td> </tr> </tbody> </table>		CALCULATION		<b>A</b>	$B + 12.7$	<b>B</b>	$0.625 \times (\text{Total No. of contacts} - 2)$	<b>C</b>	$B + 7.8$
CALCULATION									
<b>A</b>	$B + 12.7$								
<b>B</b>	$0.625 \times (\text{Total No. of contacts} - 2)$								
<b>C</b>	$B + 7.8$								

### HOW TO ORDER

**G125 - 324 XX 96 XX**

<b>SERIES CODE</b>	G125	<b>SCREW-LOK</b>	M1 Internal Thread
<b>TYPE</b>	324 Male Housing	M2 With 5.2mm Panel Mount stud	00 No fixings (use with metal hoods)
<b>TOTAL NO. OF CONTACTS</b>	06, 10, 12, 16, 20, 26, 34, 50	<b>FINISH</b>	96 Housing

### TOOLS

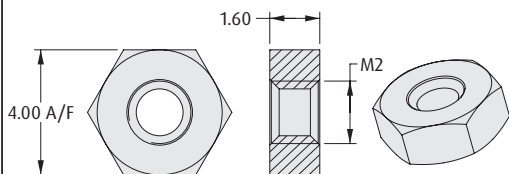
- Recommended Crimp Tool** - Z125-900
- Positioner** - Z125-901
- Contact Insertion/Removal Tool** - Z125-902

- Male contacts shown on a following page.
- Instruction sheets available at [www.harwin.com/instructions](http://www.harwin.com/instructions).

### REQUIRED HARDWARE

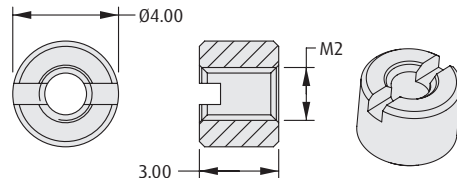
Order separately from connector

#### Hexagonal Board Mount Nut



**ORDER CODE**  
G125-450000B

#### Slotted Board Mount Nut



**ORDER CODE**  
G125-451000B

All dimensions in mm.

Patent Published