

# Gecko Connectors Introduction

**Gecko is a 1.25mm pitch High-Reliability connector range from Harwin. Improving on the popular 2mm pitch Datamate series, and harnessing the modern technology of micro-machining, this range brings the best of the high-reliability specifications to a smaller size.**

Gecko provides a low-profile, dual-row solution for all variations of cable-to-board, board-to-board and cable-to-cable interconnect requirements. With up to 50 contacts per connector, but still capable of 2A per contact, Gecko gives both significant weight and space-saving advantages over Micro-D connections. The Gecko range offers either latching connectors, for maximum weight and space-saving, or Screw-Lok connectors for maximum mating strain relief.

- ❖ 2A per contact (all electrically loaded; 2.8A per individual contact)
- ❖ 4-finger Patented\* contact design to maintain electrical contact through high vibration and shock
- ❖ Beryllium Copper Contact for improved temperature range: -65°C to +150°C
- ❖ 1,000 Mating cycles durability
- ❖ Weight and Space-saving over Micro-D connector products
- ❖ Future-proofed Materials - Halogen-free, PFOS-free, SVHC-free and RoHS compliant
- ❖ Low outgassing properties - 0.68% TML, 0.01% CVM, 0.26 WVR (Water Vapour Recovered)
- ❖ All PCB connectors available in Tape and Reel for automation

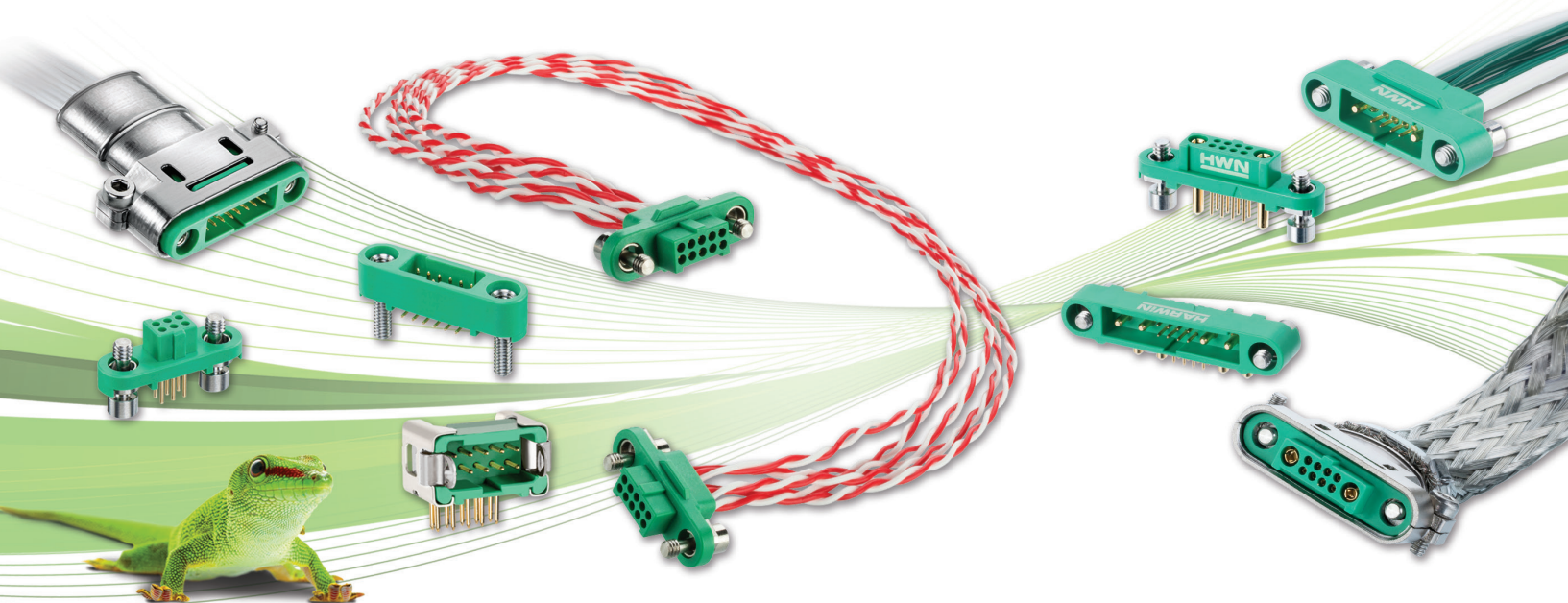
\*Granted US9017089, Pending GB2501063, Pending EP2642604

## Gecko-SL or Latches

- ❖ Strong stainless steel screw fixings for maximum strain relief, or lightweight space-saving robust latches
- ❖ Lightweight hoods for additional cable protection and shielding
- ❖ Choices of pre-wired contacts or full cable assemblies from stock, for prototyping and full production

## Gecko-MT

- ❖ Additional power contacts incorporated into the smallest, lightest mixed-layout connector
- ❖ Choice of 2 or 4 power contacts rated to 10A each
- ❖ Compatible with existing lightweight metal hoods

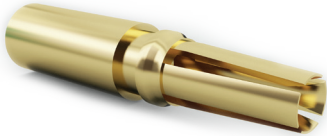


Patent Published

# Gecko Connectors Product Features

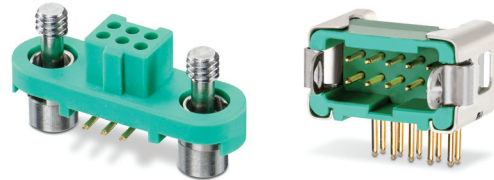
## Four Finger Beryllium Copper Contact

Unique patented pending high-reliability contact design ensures signal integrity under extremes of bump, vibration and shock. Durable to over 1,000 mating cycles.



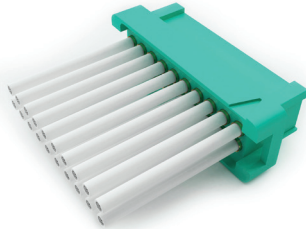
## Keyway Polarization Points

3 polarizing points on each component prevent mis-mating.



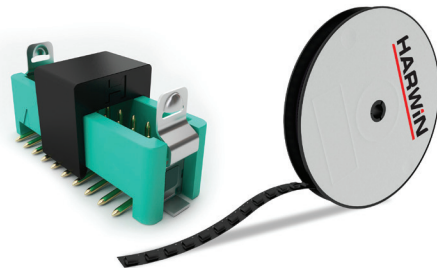
## No. 1 Position identified, Potting Wall

Housings are clearly marked with identifier for fast visual inspection. Cable connectors feature a rear potting wall adding an extra level of strain relief.



## Packaged in Tape & Reel

All connectors for PCB assembly are available packaged in industry standard Tape and Reel format for automated assembly.



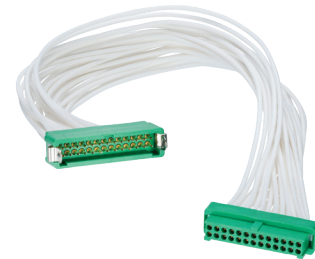
## Robust Metal Backshells

Lightweight aluminium hoods / backshells available for all connector sizes from stock. Supplied with tie-bands to attach external braiding for shielded cable assemblies.



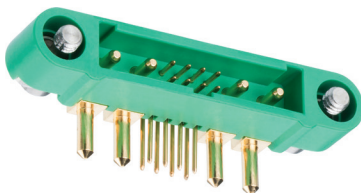
## Pre-assembled Cable Configurations

Cable connectors supplied in ready-made cable assemblies. Single and double-ended configurations available in standard lengths off-the-shelf, or custom assemblies on request.



## Minimal Outgassing

Low outgassing properties from future-proofed plastic; within NASA and ESA recommendations.



## Operating Temperature Range

Performance is maintained across the full operating temperature range of -65°C to +150°C.

