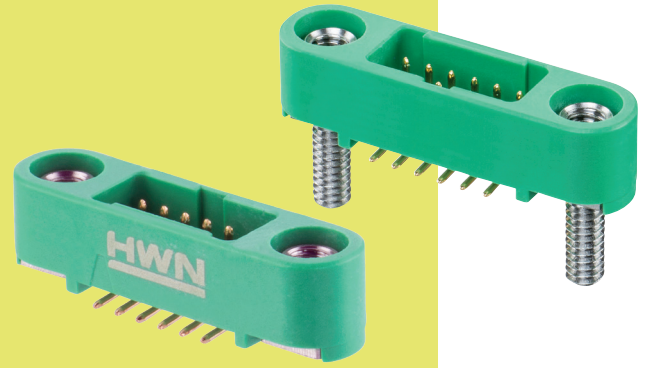


Gecko Screw-Lok Connectors

Male Vertical Surface Mount

- ❖ Stainless steel screw fixing to mate with applicable female connector.
- ❖ Order nuts for board-mount separately - see bottom of page.
- ❖ 2A current capacity, resists high vibration and shock.
- ❖ Withstands extremes of temperature: -65°C to +150°C.



GECKO SCREW-LOK

WITHOUT BOARD MOUNT	WITH BOARD MOUNT										
<p>Recommended PC Board Pattern</p>	<p>Recommended PC Board Pattern</p>										
<table border="1"> <thead> <tr> <th colspan="2">CALCULATION</th> </tr> </thead> <tbody> <tr> <td>A</td> <td>$B + 12.7$</td> </tr> <tr> <td>B</td> <td>$0.625 \times (\text{Total No. of contacts} - 2)$</td> </tr> <tr> <td>C</td> <td>$B + 7.8$</td> </tr> <tr> <td>D</td> <td>$B + 1.8$</td> </tr> </tbody> </table>		CALCULATION		A	$B + 12.7$	B	$0.625 \times (\text{Total No. of contacts} - 2)$	C	$B + 7.8$	D	$B + 1.8$
CALCULATION											
A	$B + 12.7$										
B	$0.625 \times (\text{Total No. of contacts} - 2)$										
C	$B + 7.8$										
D	$B + 1.8$										

HOW TO ORDER

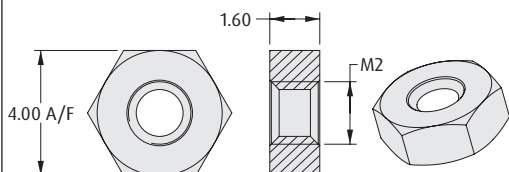
G125 - M S1 XX 05 MX X

<p>SERIES CODE</p> <p>TYPE</p> <p>S1 Surface Mount</p>	<p>PACKAGING</p> <p>R Tape & Reeled</p> <p>P Loose</p>
<p>TOTAL NO. OF CONTACTS</p> <p>06, 10, 12, 16, 20, 26, 34, 50</p>	<p>SCREW-LOK</p> <p>M1 Internal Thread</p> <p>M2 With 5mm Board Mount Stud</p>

REQUIRED HARDWARE

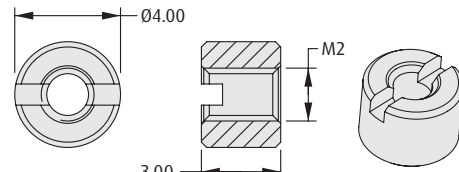
Order separately from connector

Hexagonal Board Mount Nut



ORDER CODE
G125-4500000B

Slotted Board Mount Nut



ORDER CODE
G125-4510000B

All dimensions in mm.

Patent Published