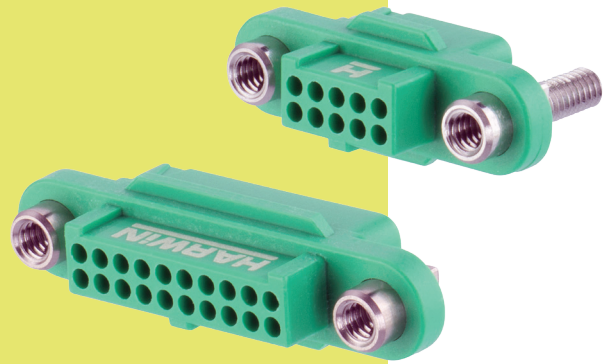


Gecko Screw-Lok Connectors

Female Crimp Housings - Reverse Fix

- Features 2.5mm potting wall for extra security.
- Use with female crimp contacts and pre-cabled contacts shown on following pages.
- Stainless steel screw fixing mates to applicable male connector fitted with floating screw-loks.
- Order nuts for panel mount separately - see bottom of page.



GECKO SCREW-LOK

WITHOUT PANEL MOUNT	WITH PANEL MOUNT										
<table border="1"> <thead> <tr> <th colspan="2">CALCULATION</th> </tr> </thead> <tbody> <tr> <td>A</td> <td>$B + 12.7$</td> </tr> <tr> <td>B</td> <td>$0.625 \times (\text{Total No. of contacts} - 2)$</td> </tr> <tr> <td>C</td> <td>$B + 7.8$</td> </tr> <tr> <td>D</td> <td>$B + 1.8$</td> </tr> </tbody> </table>		CALCULATION		A	$B + 12.7$	B	$0.625 \times (\text{Total No. of contacts} - 2)$	C	$B + 7.8$	D	$B + 1.8$
CALCULATION											
A	$B + 12.7$										
B	$0.625 \times (\text{Total No. of contacts} - 2)$										
C	$B + 7.8$										
D	$B + 1.8$										

HOW TO ORDER

G125 - 224 XX 96 FX

SERIES CODE	G125	SCREW-LOK	F2	Internal Thread
TYPE	224	Female Housing	F3	With 5mm Panel Mount stud
TOTAL NO. OF CONTACTS	06, 10, 12, 16, 20, 26, 34, 50	FINISH	96	Housing

TOOLS

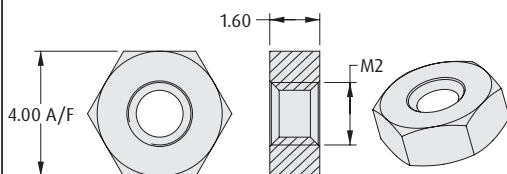
Recommended Crimp Tool - Z125-900
Positioner - Z125-901
Contact Insertion/Removal Tool - Z125-902

- Female contacts shown on following pages.
- Instruction sheets available at www.harwin.com/instructions.

REQUIRED HARDWARE

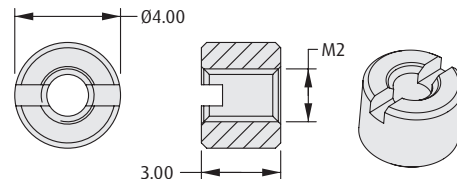
Order separately from connector

Hexagonal Board Mount Nut



ORDER CODE
G125-4500000B

Slotted Board Mount Nut



ORDER CODE
G125-4510000B

All dimensions in mm.

Patent Published