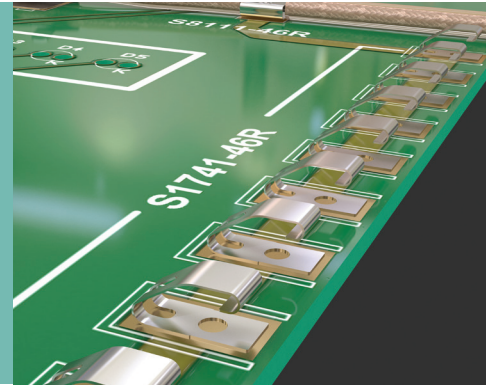


# Spring Contacts

## Grounding/RFI Contacts

- ❖ SMT devices for use in shielding and grounding applications.
- ❖ For use on surface mount PCBs, in contact with metal shields or frames.
- ❖ Suitable for both wiping and sliding actions.
- ❖ Ideal for automated requirements, using standard placement equipment.



SPRING CONTACTS

1.7mm HIGH	2.5mm HIGH										
<p style="text-align: center;">Recommended PC Board Pattern</p> <table border="1"> <thead> <tr> <th>ORDER CODE</th> <th>FINISH</th> </tr> </thead> <tbody> <tr> <td>S7121-42R</td> <td>Gold</td> </tr> </tbody> </table>	ORDER CODE	FINISH	S7121-42R	Gold	<p style="text-align: center;">Recommended PC Board Pattern</p> <table border="1"> <thead> <tr> <th>ORDER CODE</th> <th>FINISH</th> </tr> </thead> <tbody> <tr> <td>S1741-46R</td> <td>Tin</td> </tr> </tbody> </table>	ORDER CODE	FINISH	S1741-46R	Tin		
ORDER CODE	FINISH										
S7121-42R	Gold										
ORDER CODE	FINISH										
S1741-46R	Tin										
2.7mm HIGH	3.5mm HIGH										
<p style="text-align: center;">Recommended PC Board Pattern</p> <table border="1"> <thead> <tr> <th>ORDER CODE</th> <th>FINISH</th> </tr> </thead> <tbody> <tr> <td>S7091-42R</td> <td>Gold + Tin</td> </tr> </tbody> </table>	ORDER CODE	FINISH	S7091-42R	Gold + Tin	<p style="text-align: center;">Recommended PC Board Pattern</p> <table border="1"> <thead> <tr> <th>ORDER CODE</th> <th>FINISH</th> </tr> </thead> <tbody> <tr> <td>S1761-42R</td> <td>Gold + Tin</td> </tr> <tr> <td>S1761-46R</td> <td>Tin</td> </tr> </tbody> </table>	ORDER CODE	FINISH	S1761-42R	Gold + Tin	S1761-46R	Tin
ORDER CODE	FINISH										
S7091-42R	Gold + Tin										
ORDER CODE	FINISH										
S1761-42R	Gold + Tin										
S1761-46R	Tin										
4.0mm HIGH	5.6mm HIGH										
<p style="text-align: center;">Recommended PC Board Pattern</p> <table border="1"> <thead> <tr> <th>ORDER CODE</th> <th>FINISH</th> </tr> </thead> <tbody> <tr> <td>S1791-42R</td> <td>Gold</td> </tr> </tbody> </table>	ORDER CODE	FINISH	S1791-42R	Gold	<p style="text-align: center;">Recommended PC Board Pattern</p> <table border="1"> <thead> <tr> <th>ORDER CODE</th> <th>FINISH</th> </tr> </thead> <tbody> <tr> <td>S7061-42R</td> <td>Gold + Tin</td> </tr> <tr> <td>S7061-46R</td> <td>Tin</td> </tr> </tbody> </table>	ORDER CODE	FINISH	S7061-42R	Gold + Tin	S7061-46R	Tin
ORDER CODE	FINISH										
S1791-42R	Gold										
ORDER CODE	FINISH										
S7061-42R	Gold + Tin										
S7061-46R	Tin										

All dimensions in mm.