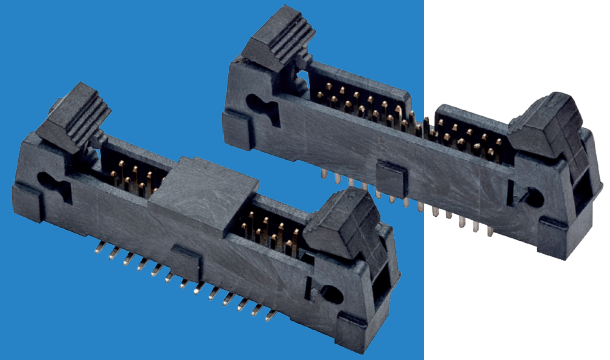


# Archer Connectors – M50 IDC

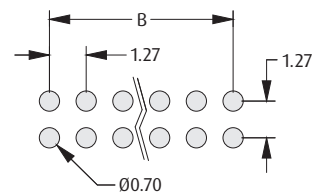
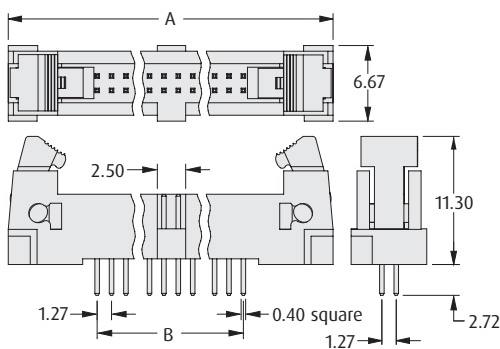
## Male Vertical Latching Connectors

- Suitable for use with female cable connectors shown on previous page.
- Surface mount option has locking pegs for location and retention.
- Shrouded for robust pin protection.
- Polarized to prevent mis-mating.
- Secure, positive latch & ejection system.
- Tape and Reel packaging option includes Pick and Place cap for automated assembly.



1.27mm (.050") PITCH

### THROUGHBOARD

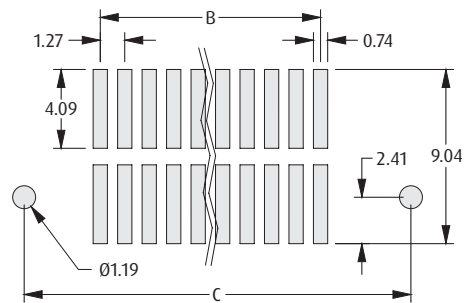
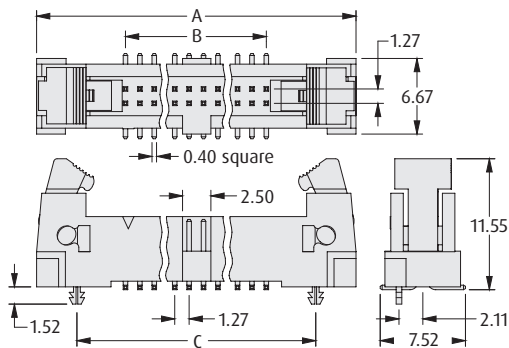


Recommended PC Board Pattern

#### CALCULATION

<b>A</b>	$B + 15.75$
<b>B</b>	$1.27 \times (\text{No. of contacts per row} - 1)$
<b>C</b>	$B + 8.64$

### SURFACE MOUNT



Recommended PC Board Pattern

### HOW TO ORDER

**M50 - 3 X 5 XX 42 X**

#### SERIES CODE

#### TYPE

<b>5</b>	Throughboard
<b>6</b>	Surface Mount

#### NO. OF CONTACTS PER ROW

<b>05, 06, 08, 10, 13, 17, 20, 25</b>	Throughboard
<b>05 to 08, 10, 13, 17, 20, 25</b>	Surface Mount

#### PACKAGING

<b>R</b>	Tape & Reeled (M50-365)
<b>Blank</b>	Loose (M50-355)

#### FINISH

<b>42</b>	Gold + Tin
-----------	------------

All dimensions in mm.