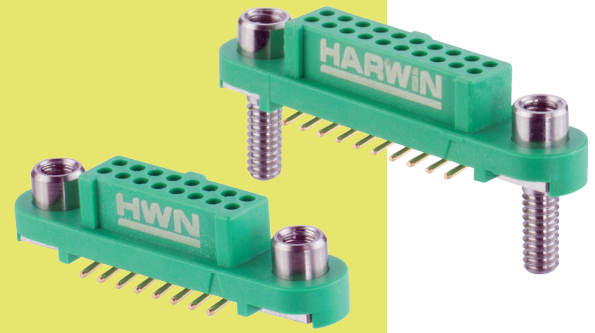


Gecko Screw-Lok Connectors

Female Surface Mount - Reverse Fix

- ❖ Stainless steel screw fixing to mate with applicable male connector.
- ❖ Reverse fix screw-lok suitable for board-to-cable applications, where the female connector is located on the PCB.
- ❖ Order nuts for board-mount separately - see bottom of page.
- ❖ Available in Tape and Reel Packaging, with Pick and Place cap.



GECKO SCREW-LOK

| WITHOUT BOARD MOUNT | WITH BOARD MOUNT | | | | | | | | | | |
|--|---|-------------|--|----------|------------|----------|---|----------|-----------|----------|-----------|
| <p>Recommended PC Board Pattern</p> | <p>Recommended PC Board Pattern</p> | | | | | | | | | | |
| <table border="1"> <thead> <tr> <th colspan="2">CALCULATION</th> </tr> </thead> <tbody> <tr> <td>A</td> <td>$B + 12.7$</td> </tr> <tr> <td>B</td> <td>$0.625 \times (\text{Total No. of contacts} - 2)$</td> </tr> <tr> <td>C</td> <td>$B + 7.8$</td> </tr> <tr> <td>D</td> <td>$B + 1.8$</td> </tr> </tbody> </table> | | CALCULATION | | A | $B + 12.7$ | B | $0.625 \times (\text{Total No. of contacts} - 2)$ | C | $B + 7.8$ | D | $B + 1.8$ |
| CALCULATION | | | | | | | | | | | |
| A | $B + 12.7$ | | | | | | | | | | |
| B | $0.625 \times (\text{Total No. of contacts} - 2)$ | | | | | | | | | | |
| C | $B + 7.8$ | | | | | | | | | | |
| D | $B + 1.8$ | | | | | | | | | | |

HOW TO ORDER

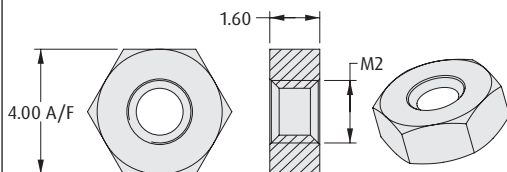
G125 - F S1 XX 05 FX X

| | | | |
|------------------------------|--------------------------------|------------------|--|
| SERIES CODE | G125 | PACKAGING | R Tape & Reeled P Loose |
| TYPE | S1 Surface Mount | SCREW-LOK | F2 Internal Thread F3 With 5mm Board Mount stud |
| TOTAL NO. OF CONTACTS | 06, 10, 12, 16, 20, 26, 34, 50 | | |

REQUIRED HARDWARE

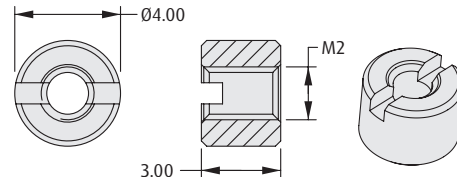
Order separately from connector

Hexagonal Board Mount Nut



ORDER CODE
G125-4500000B

Slotted Board Mount Nut



ORDER CODE
G125-4510000B

All dimensions in mm.

Patent Published