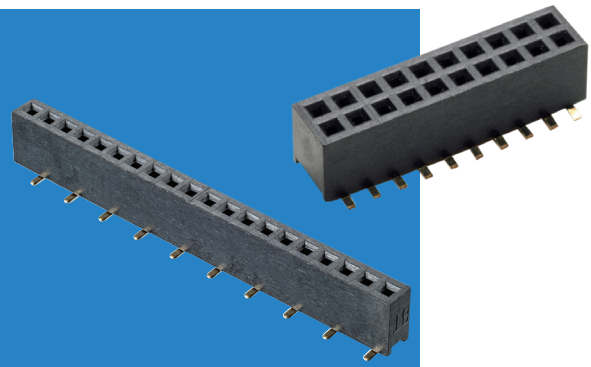


Archer Connectors – M50

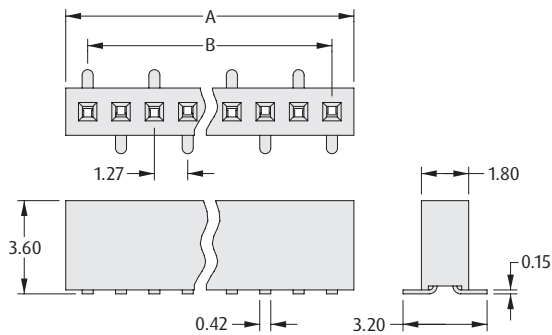
Female Vertical Surface Mount, Low Profile

- Lower profile surface mount connector with twin beam contacts for additional board-to-board height options.



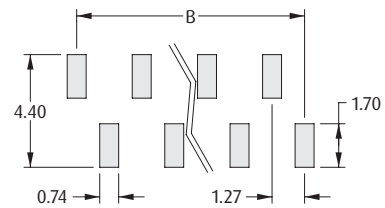
1.27mm (.050") PITCH

SINGLE ROW



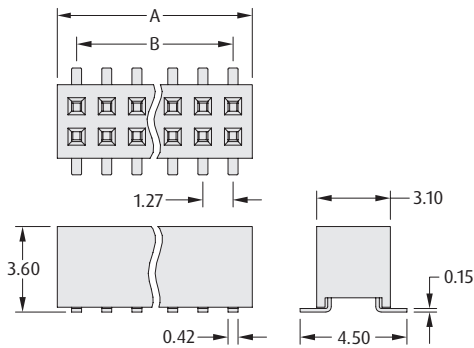
CALCULATION

A	$B + 1.67$
B	$1.27 \times (\text{No. of contacts per row} - 1)$



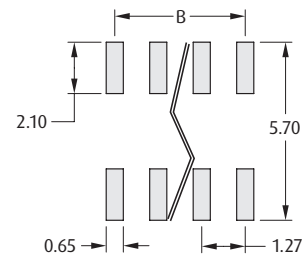
Recommended PC Board Pattern

DOUBLE ROW



CALCULATION

A	$B + 1.73$
B	$1.27 \times (\text{No. of contacts per row} - 1)$



Recommended PC Board Pattern

HOW TO ORDER

M50 - 31 X XX XX X

SERIES CODE

TYPE

2	Double Row
4	Single Row

PACKAGING

R	Tape & Reeled (Single Row)
Blank	Loose

FINISH

45	Gold
-----------	------

NO. OF CONTACTS PER ROW

03 to 15, 20, 25, 30, 50	Double Row
02 to 06, 08, 10, 20	Single Row

All dimensions in mm.