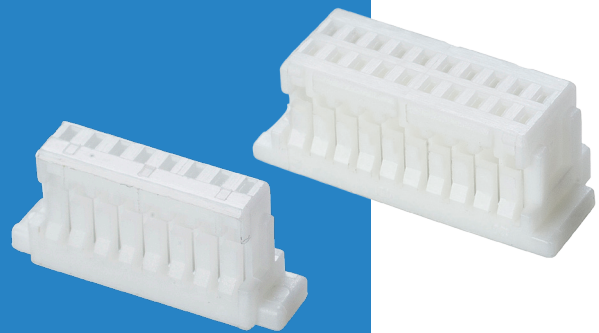


# M40 Cable-to-Board Connectors

## Female Crimp Housings

- ❏ Crimp contacts or pre-cabled contacts are ordered separately - see following pages.
- ❏ Crimped contacts on wires are inserted into rear of connector housing - no additional tooling required.



1mm (.039") PITCH

SINGLE ROW	CALCULATION	DOUBLE ROW	CALCULATION
	<b>A</b> B + 4		<b>A</b> B + 4
	<b>B</b> No. of contacts per row - 1		<b>B</b> No. of contacts per row - 1

### HOW TO ORDER

**M40 - 1X0 XX 00**

**SERIES CODE**

**TYPE**

<b>110</b>	Single Row
<b>120</b>	Double Row

**NO. OF CONTACTS PER ROW**

<b>02 to 20</b>	Single Row
<b>05 to 10, 12, 15, 20, 25</b>	Double Row

All dimensions in mm.