

Rectangular Connectors Introduction

Durable, rugged double-row high performance connection systems, designed to meet the tough challenges of industrial application environments and cost requirements.

These rectangular connectors are supplied in a choice of contact pitches - 1.27mm pitch for board-to-board & cable-to-board (Archer Kontrol), or 2mm pitch for cable-to-board (M225 Series). Shrouded and polarized connector bodies help withstand lateral and twisting forces, and protect unmated connector contacts.

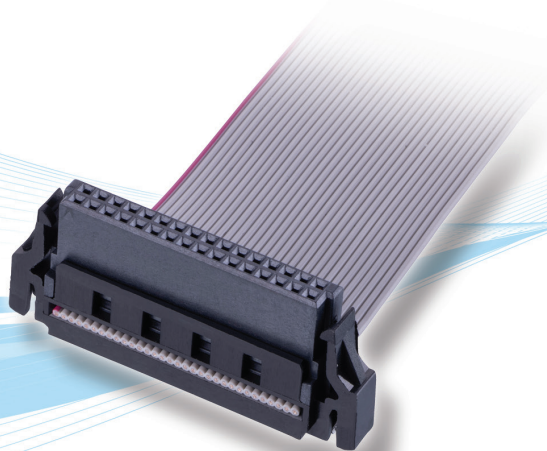
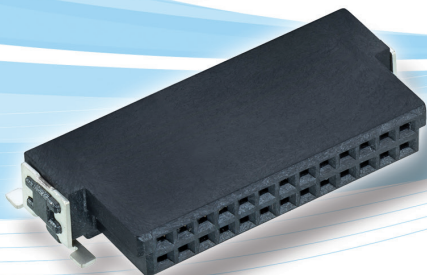
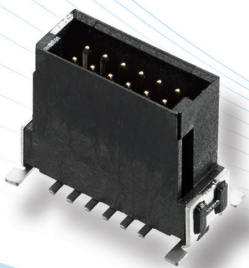
- ❖ Increased operating temperature range: -55°C to +125°C
- ❖ Stocked in depth across Harwin's authorized distributor network

Durable Industrial Rectangular Connectors provide an excellent connection system for a variety of demanding industrial environments.

- ❖ Industrial: factory and mobile machinery, control panels and sub-systems, drives, robotics and other automation
- ❖ Instrumentation: test equipment and portable hand-held devices
- ❖ Site Control: remote control devices, ground and machinery monitoring
- ❖ IOT installations, dataloggers, trackside monitoring equipment, vehicle control systems

Archer Kontrol

- ❖ Current rating of 1.2A per contact
- ❖ Vertical and Horizontal options in both male and female connectors - board-to-board connection for parallel/mezzanine with variable stacking heights, motherboard to daughterboard, or coplanar/edge-to-edge PCB layouts
- ❖ Ready-made IDC cable assemblies, double ended with latching female connectors



M225 Connectors

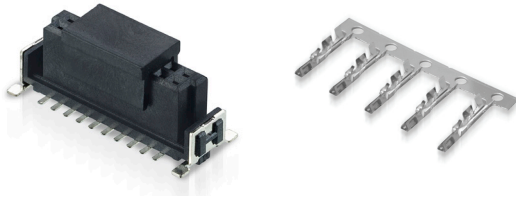
- ❖ Current rating of 3A per signal contact (all electrically loaded; 3.3A per individual contact)
- ❖ Cable-to-board connection, with vertical PCB mounted male
- ❖ Female crimp contacts on continuous strip for automated crimping
- ❖ Simple locking mechanism - push fixing pin fully home to expand and lock the rubber collar into the male connector



Rectangular Connectors Product Features

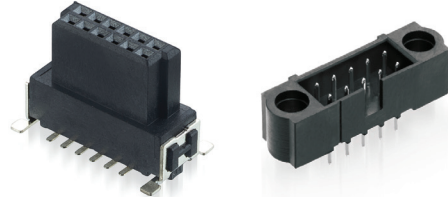
Designed for Automated Manufacturing

All board-to-board (Archer Kontrol) connectors are supplied in tape and reel, all female cable contacts (M225 Series) are available on continuous feed strip.



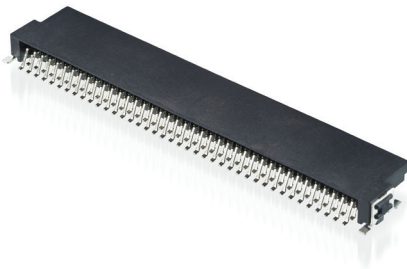
Rugged construction and polarization

Vibration resistant to 20G (Archer Kontrol) and 10G (M225 Series), suitable for operational temperatures from -55°C to +125°C, with significant polarization features to prevent mis-mating in daily use.



Archer Kontrol - High speed data transmission

Data transmission rates of 3Gbit/s if the system is suitably designed, by analysis of insertion loss and near-end crosstalk (NEXT).



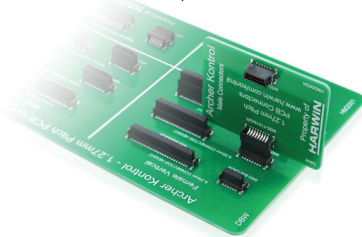
Archer Kontrol - IDC connection for cable-to-board

Ready-made cable assemblies constructed with 30AWG ribbon cable, off-the-shelf for immediate availability. Latching features for added strain relief.



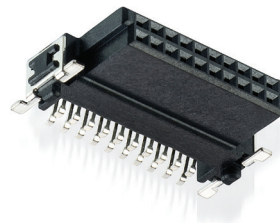
Archer Kontrol - Wide choice of stacking heights

Variable stack heights for parallel / mezzanine PCB placement, from 8.00mm to 20.00mm. Right angle mother/daughterboard and co-planar orientations also possible.



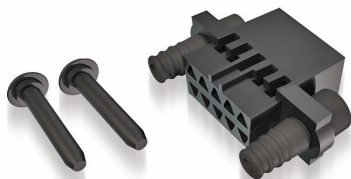
Archer Kontrol - PCB location and strain relief

Both vertical and horizontal connectors feature location pegs to assist with SMT board placement, and additional strain relief is provided with SMT hold-down tabs.



M225 Series - Fast and easy locking system

Simple locking mechanism - push fixing pin fully home to expand and lock the rubber collar into the male connector.



M225 Series - 3 points of contact

Improved signal integrity assurance with female Beryllium Copper contacts, giving vibration and shock resistance.

