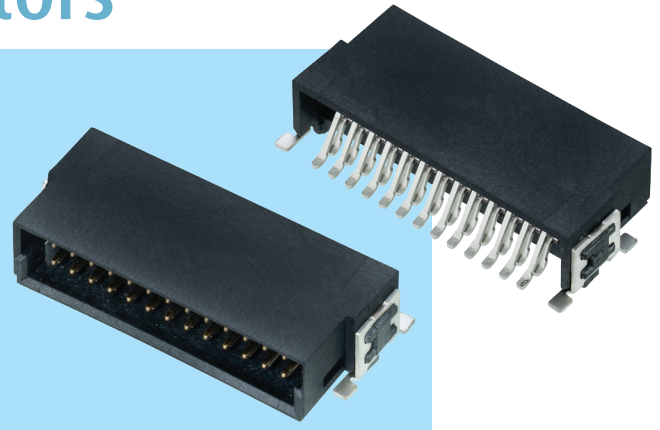


# Archer Kontrol Connectors

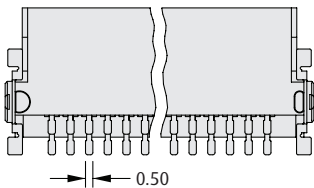
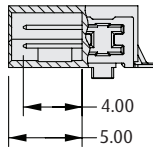
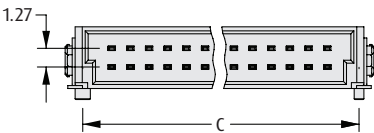
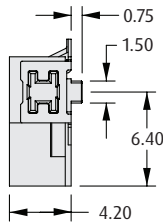
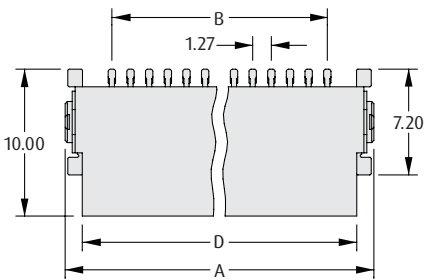
## Male Horizontal Surface Mount

- ❖ Suitable for coplanar (edge-to-edge) or motherboard-to-daughterboard configurations.
- ❖ Hold-down SMT retaining straps for additional retention to the board.
- ❖ Polarized and shrouded housing design.
- ❖ Location pegs and tape & reel packaging for automated assembly processes.



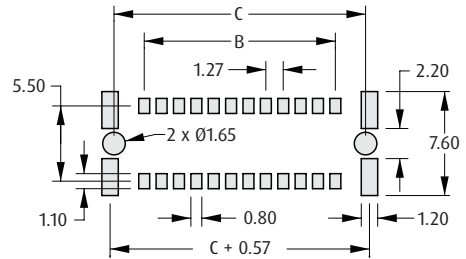
ARCHER CONTROL

### HORIZONTAL



### CALCULATION

<b>A</b>	$B + 6.35$
<b>B</b>	$0.635 \times (\text{Total No. of contacts} - 2)$
<b>C</b>	$B + 4.42$
<b>D</b>	$B + 4.02$



Recommended PC Board Pattern

### HOW TO ORDER

**M55 - 710 XX 42 R**

**SERIES CODE**

#### PACKAGING

**R** Tape & Reeled

#### FINISH

**42** Gold + Tin

#### TOTAL NO. OF CONTACTS

**12, 16, 20, 26, 32, 40, 50, 68, 80**

All dimensions in mm.