

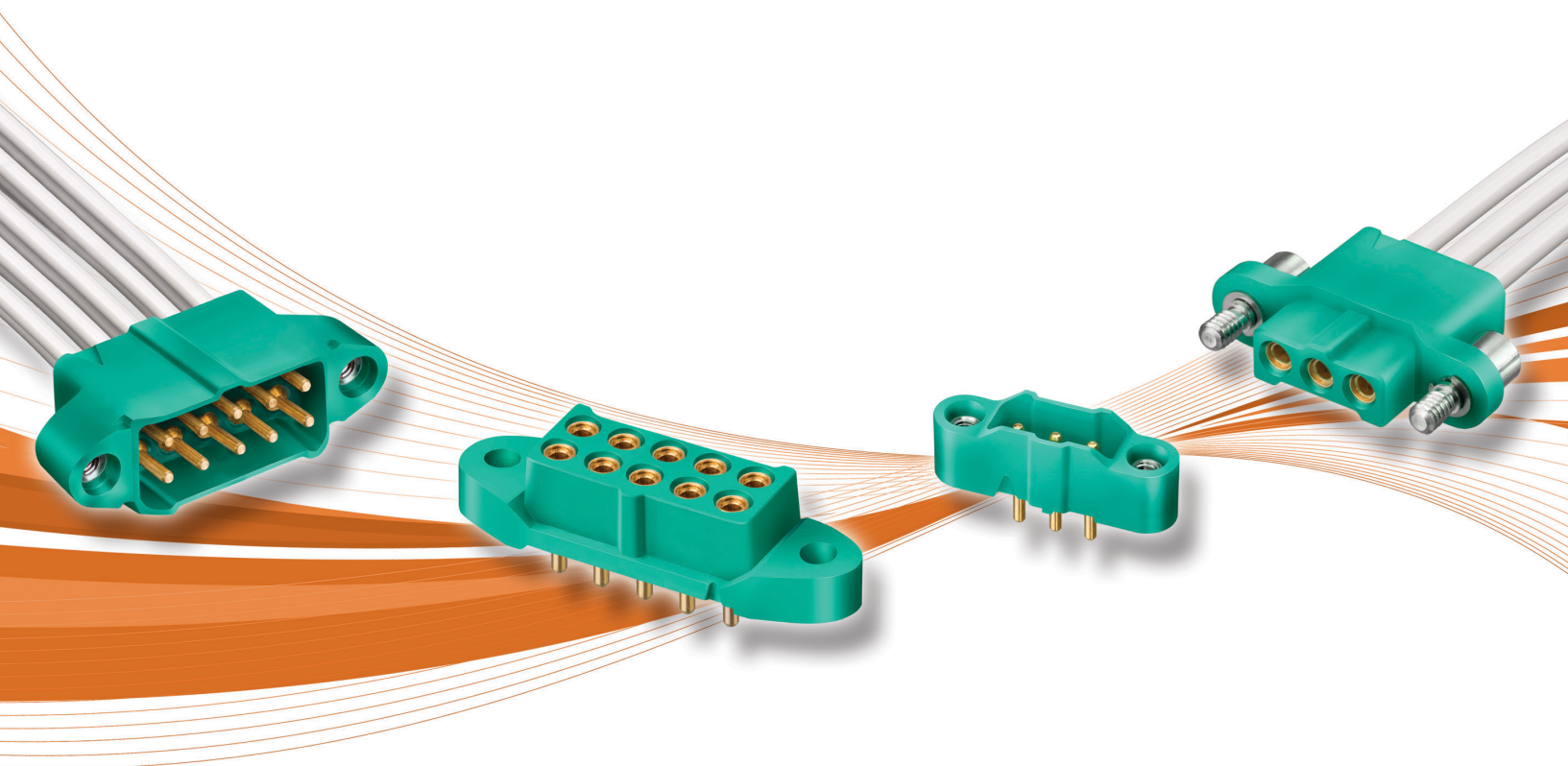
M300 Connectors Introduction

M300

M300 Series is a 3.00mm pitch High-Reliability, high performance connector range from Harwin. Building on the Datamate series design, these connectors increase the power-handling capacity in a larger contact size, while maintaining compactness and weight saving features.

The M300 series provides a robust mid-range power connector range for board-to-board, board-to-cable and cable-to-cable requirements. The compact form can carry up to 10A in a small space envelope, suited to aerospace, defense, industrial and other harsh environments. Stainless Steel jackscrews, replicated from both Datamate and Gecko, provide the vibration and shock resistance required in these applications. Housings are manufactured from Halogen-free and Red-Phosphorus-free glass-filled thermoplastic and all connectors are fully RoHS compliant.

- ❖ Up to 5A or up to 10A current ratings (dependent on cable size choice)
- ❖ Increased durability of 1,000 mating operations (minimum)
- ❖ Improved heat resistance: withstands -65°C to +175°C operating temperature
- ❖ Recessed contact design to help prevent damage in blind-mating conditions
- ❖ Ready-made cable assemblies manufactured in-house by experienced Harwin personnel
- ❖ Strong stainless steel jackscrews for maximum strain relief



M300 Connectors Product Features

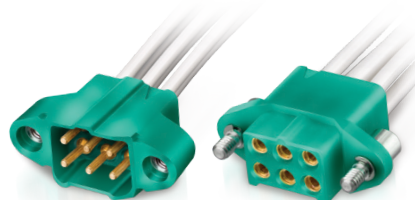
Four Finger Beryllium Copper Contact

Proven high-reliability contact design ensures signal integrity under extremes of bump, vibration and shock. Durable to over 1,000 mating cycles.



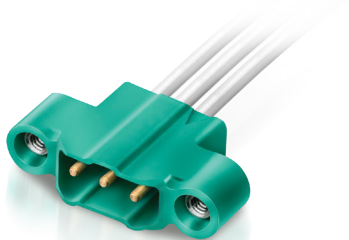
Keyway Polarization Points

3 polarizing points on each component prevent mis-mating.



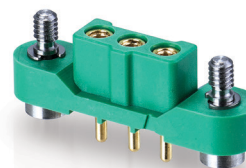
No. 1 Position identified

Housings are clearly marked with identifier for fast visual inspection.



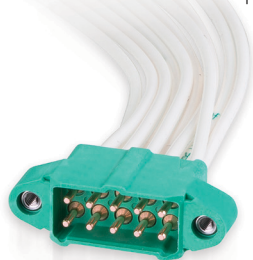
Rugged Construction

For use in harsh environments where high vibration, shock and temperature are a consideration.



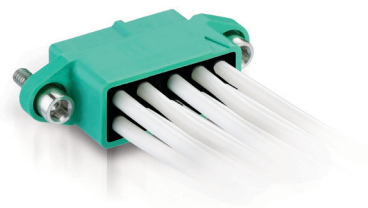
Pre-assembled Cable Configurations

Cable connectors supplied in ready-made cable assemblies. Single-ended configurations available in standard lengths off-the-shelf, or custom assemblies on request.



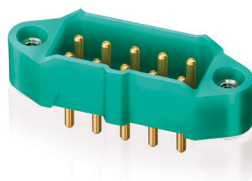
Potting Wall

Cable connectors feature a rear potting wall adding an extra level of strain relief.



Minimal Outgassing

Low outgassing properties from future-proofed plastic; within NASA and ESA recommendations.



Comprehensive Operating Temperature

Performance is maintained across the full operating temperature range of -65°C to +175°C.

