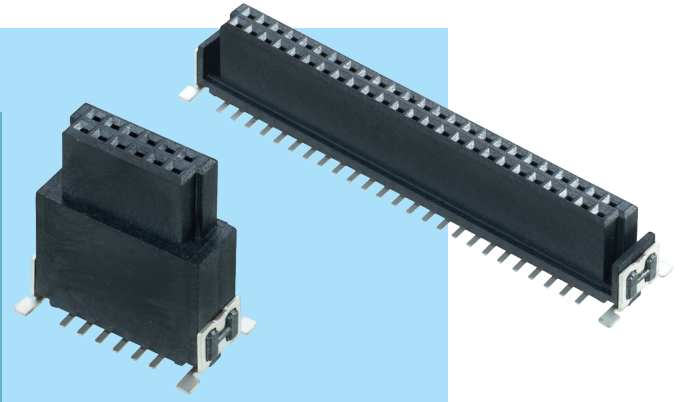


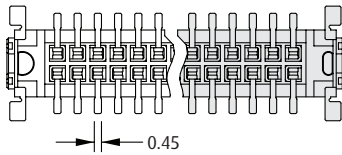
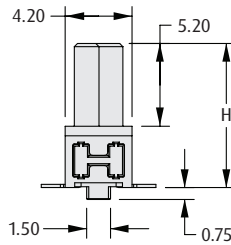
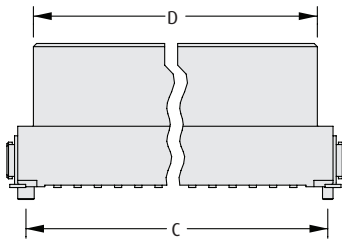
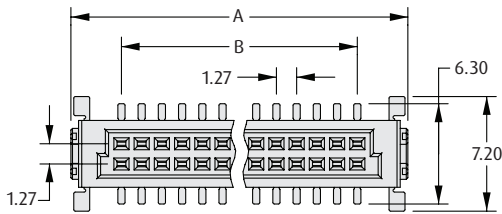
# Archer Kontrol Connectors

## Female Vertical Surface Mount

- ❖ Suitable for parallel board-to-board (mezzanine stacking) or motherboard-to-daughterboard configurations.
- ❖ Choice of three height options.
- ❖ Polarized and shrouded housing design.
- ❖ Location pegs and tape & reel packaging for automated assembly processes.

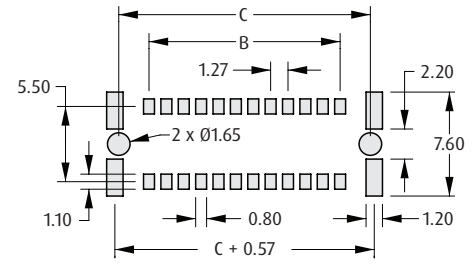


### VERTICAL



### CALCULATION

<b>A</b>	$B + 6.35$
<b>B</b>	$0.635 \times (\text{Total No. of contacts} - 2)$
<b>C</b>	$B + 4.42$
<b>D</b>	$B + 3.02$



Recommended PC Board Pattern

### HOW TO ORDER

**M55 - 60 X XX 42 R**

#### SERIES CODE

#### CONNECTOR HEIGHT

<b>0</b>	H = 6.25mm
<b>1</b>	H = 9.05mm
<b>2</b>	H = 13.65mm

#### PACKAGING

**R** Tape & Reeled

#### FINISH

**42** Gold + Tin

#### TOTAL NO. OF CONTACTS

**12, 16, 20, 26, 32, 40, 50, 68, 80**

All dimensions in mm.