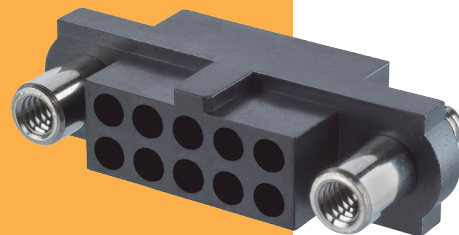


# Datamate J-Tek Connectors

## Female Crimp Housing - Reverse Fix

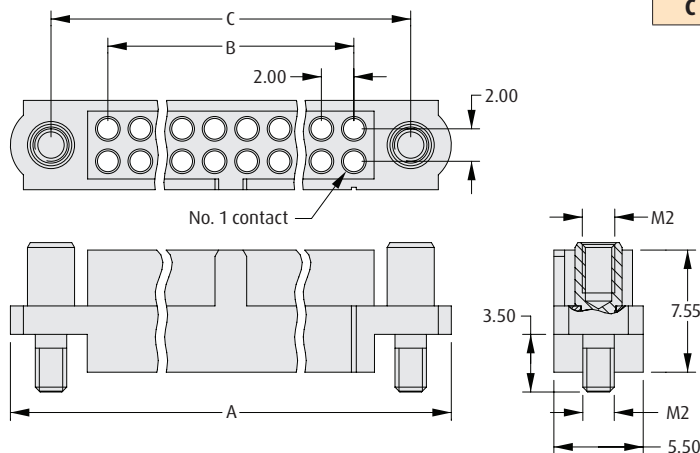
- Compatible with all female signal barrel crimp contacts, including T-Contact shown on previous page.
- Use insertion tool to insert crimped contacts into rear of connector housing: **order code Z80-280**.
- Jackscrews are supplied already assembled to housing.
- Connectors mate with Datamate J-Tek male connectors with compatible Reverse Fix jackscrews.



### REVERSE FIX JACKSCREWS

#### CALCULATION

<b>A</b>	B + 12
<b>B</b>	Total no. of contacts - 2
<b>C</b>	B + 7



### HOW TO ORDER

**M80 - 41 5 XX 98**

#### SERIES CODE

#### JACKSCREW TYPE

**5**

Reverse Fix Jackscrew

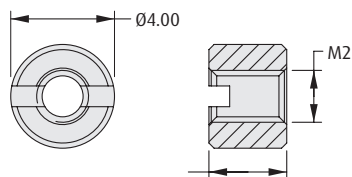
#### TOTAL NO. OF CONTACTS

04 to 50 (Even numbers only)

### HARDWARE FOR PANEL MOUNT STUD

Order separately from connector

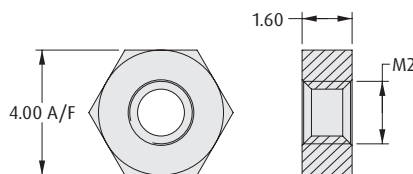
#### Slotted Board Mount Nut



#### ORDER CODE

**M80-2130000B**

#### Hexagonal Board Mount Nut



#### ORDER CODE

**M80-2430000B**

All dimensions in mm.