

Gecko-MT Connectors

GECKO-MT

Female Cable Housings – Reverse Fix Panel Mount

- Reverse fix screw-lok, where the male connector has the floating screw.
- Features potting wall for backpotting to give extra security.
- No. 1 position identified on housing.
- Order nuts for panel mount separately - see bottom of page.



1+8+1	2+8+2	All other dimensions as 1+8+1

TOOLS

Recommended Crimp Tools – Z125-900 (signal), Z125-903 (power)
Positioner – Z125-901 (signal), Z125-904 (power)
Contact Insertion/Removal Tool – Z125-902 (signal), Z125-905 (power)

- Female contacts shown on a following page.
- Instruction sheets available at www.harwin.com/instructions.

HOW TO ORDER

G125 - 22496 F3 - 0X - 08 - 0X

SERIES CODE

SCREW-LOK

F3 With 5.2mm Panel Mount stud

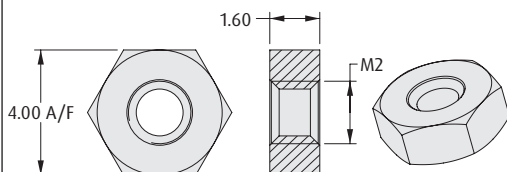
NO. OF CONTACTS

01-08-01	1+8+1 Configuration
02-08-02	2+8+2 Configuration

REQUIRED HARDWARE

Order separately from connector

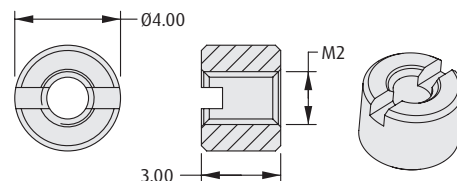
Hexagonal Board Mount Nut



ORDER CODE

G125-4500000B

Slotted Board Mount Nut



ORDER CODE

G125-4510000B

All dimensions in mm.

Patent Published