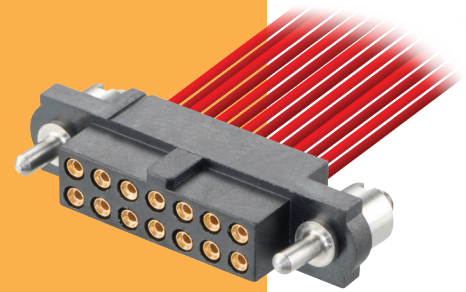


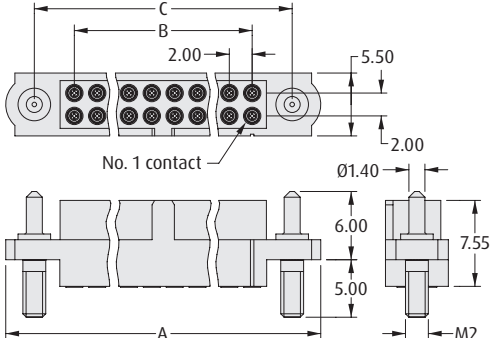
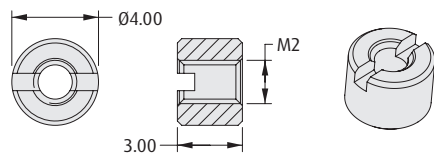
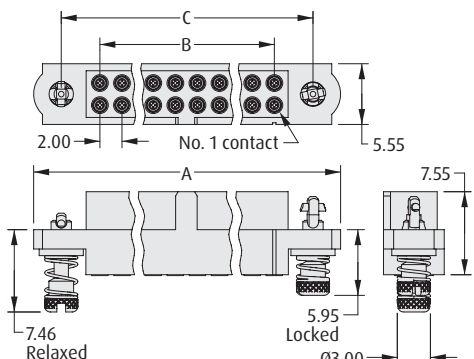
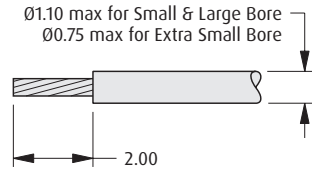
Datamate J-Tek Connectors

Female Crimp Kit - Guide Pin, 101Lok

- Guide pin style includes board mount fixing.
- 101Lok fixing gives secure, fast and simple mating; no special tooling required. Just a simple 101-degree turn is required to fix the connectors together.
- Connectors mate with Datamate J-Tek male connectors with applicable jackscrews or 101Lok fixings.
- Part numbers are for a complete kit of a housing and the applicable number of contacts.



DATAMATE J-TEK

GUIDE PIN JACKSCREWS	101LOK																										
 <p>Board Mount Nut, 2 per connector</p>  <table border="1" data-bbox="657 1071 966 1228"> <thead> <tr> <th colspan="2">CALCULATION</th> </tr> </thead> <tbody> <tr> <td>A</td> <td>B + 12</td> </tr> <tr> <td>B</td> <td>Total no. of contacts - 2</td> </tr> <tr> <td>C</td> <td>B + 7</td> </tr> </tbody> </table>	CALCULATION		A	B + 12	B	Total no. of contacts - 2	C	B + 7																			
CALCULATION																											
A	B + 12																										
B	Total no. of contacts - 2																										
C	B + 7																										
<p>TOOLS</p> <p>Recommended Crimp Tool - M22520/2-01 Positioner - T5747 Contact Insertion/Removal Tool - Z80-280</p> <ul style="list-style-type: none"> Spare and pre-cabled contacts shown on following pages. Instruction sheets available at www.harwin.com/instructions. 	<p>WIRE STRIPPING DETAILS</p> 																										
<p>HOW TO ORDER</p>																											
<p style="text-align: center;">M80 - 4 X1 XX XX FX</p> <table border="1" data-bbox="146 1659 519 1701"> <tr> <th colspan="2">SERIES CODE</th> </tr> </table> <table border="1" data-bbox="146 1732 519 1890"> <thead> <tr> <th colspan="2">TYPE</th> </tr> </thead> <tbody> <tr> <td>C1</td> <td>Small Bore (24-28 AWG)</td> </tr> <tr> <td>D1</td> <td>Large Bore (22 AWG)</td> </tr> <tr> <td>E1</td> <td>Extra Small Bore (28-32 AWG)</td> </tr> </tbody> </table> <table border="1" data-bbox="665 1806 1079 1890"> <thead> <tr> <th colspan="2">TOTAL NO. OF CONTACTS</th> </tr> </thead> <tbody> <tr> <td colspan="2">04, 06, 08, 10, 12, 14, 20, 26, 34, 42, 50</td> </tr> </tbody> </table> <table border="1" data-bbox="1274 1617 1469 1732"> <thead> <tr> <th colspan="2">JACKSCREW</th> </tr> </thead> <tbody> <tr> <td>F3</td> <td>Guide Pin</td> </tr> <tr> <td>FC</td> <td>101Lok</td> </tr> </tbody> </table> <table border="1" data-bbox="1274 1774 1469 1890"> <thead> <tr> <th colspan="2">FINISH</th> </tr> </thead> <tbody> <tr> <td>05</td> <td>Gold</td> </tr> <tr> <td>42</td> <td>Gold + Tin</td> </tr> </tbody> </table>		SERIES CODE		TYPE		C1	Small Bore (24-28 AWG)	D1	Large Bore (22 AWG)	E1	Extra Small Bore (28-32 AWG)	TOTAL NO. OF CONTACTS		04, 06, 08, 10, 12, 14, 20, 26, 34, 42, 50		JACKSCREW		F3	Guide Pin	FC	101Lok	FINISH		05	Gold	42	Gold + Tin
SERIES CODE																											
TYPE																											
C1	Small Bore (24-28 AWG)																										
D1	Large Bore (22 AWG)																										
E1	Extra Small Bore (28-32 AWG)																										
TOTAL NO. OF CONTACTS																											
04, 06, 08, 10, 12, 14, 20, 26, 34, 42, 50																											
JACKSCREW																											
F3	Guide Pin																										
FC	101Lok																										
FINISH																											
05	Gold																										
42	Gold + Tin																										

All dimensions in mm.