

Datamate Mix-Tek Connectors

Metal Backshell Accessories

- ❖ Metal Backshells that can be used with any female cable connector (up to 12AWG), or male connectors with board mount jackscrews.
- ❖ Female backshells come with jackscrews - any existing jackscrews can be removed by removing the e-clip.
- ❖ Suitable for new designs, or in-production addition to enhance existing designs.



DATAMATE MIX-TEK

PART NUMBERING SYSTEM

M80 - 9 XX XX 02

SERIES CODE

FINISH

02 Nickel

TYPE

06	Male
45	Female with Slotted Jackscrews
46	Female with Hex Socket Jackscrews

EQUIVALENT NO. OF SIGNAL CONTACTS	NO. OF POWER ONLY OR COAX ONLY CONTACTS	NO. OF CONTACTS IN POWER/SIGNAL COMBINATION
08	2 contacts	-
10	-	2 Power, 2 Signal
12	3 contacts	2 Power, 4 Signal
14	-	2 Power, 6 Signal
16	4 contacts	2 Power, 8 Signal
18	-	4 Power, 2 Signal
20	5 contacts	2 Power, 12 Signal or 4 Power, 4 Signal
22	-	4 Power, 6 Signal
24	6 contacts	4 Power, 8 Signal
28	7 contacts	4 Power, 12 Signal
32	8 contacts	-
36	9 contacts	-
40	10 contacts	-
44	11 contacts	-
48	12 contacts	-

All dimensions in mm.

Datamate Mix-Tek Connectors

Female Metal Backshell

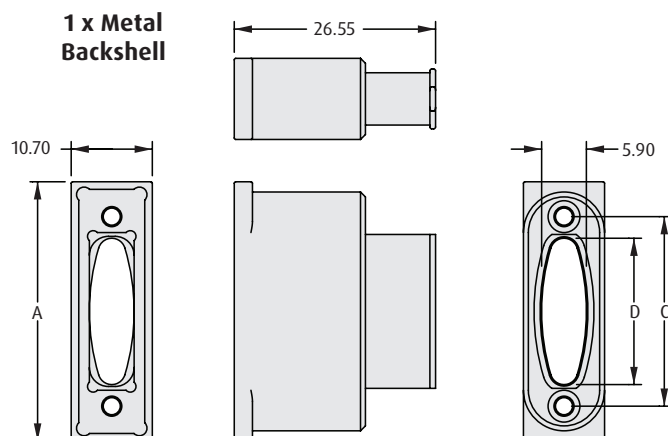
- ❖ Supplied as an accessory kit, including metal backshell, e-clips and the applicable jackscrews.
- ❖ To be used with the appropriate size of Female Cable connector kit without jackscrews (existing jackscrews can be removed).
- ❖ Gives 360 degree shielding when used with conductive braid and mated to a compatible male connector with metal backshell.
- ❖ Instruction sheets available at www.harwin.com/instructions.



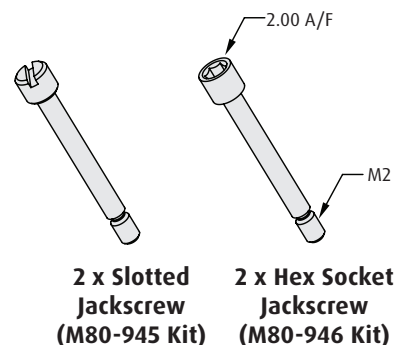
FEMALE

CALCULATION

A	$B + 16.2$
B	Equivalent no. of contacts - 2
C	$B + 7$
D	$B + 0.8$



4 x E-Clip
(2 spare)



2 x Slotted
Jackscrew
(M80-945 Kit)

2 x Hex Socket
Jackscrew
(M80-946 Kit)

E-CLIP TOOL



- ❖ For assembling E-Clips supplied with kit.

ORDER CODE

Z80-300

BAND-IT TIE



- ❖ For fixing braid to rear collar (requires Tie Dex II A30199 Micro Band tool).

ORDER CODE

M80-9470000	Length = 206.8mm
M80-9480000	Length = 362.0mm

HOW TO ORDER

M80 - 94 X XX 02

SERIES CODE

TYPE

5	With Slotted Jackscrews
6	With Hex Socket Jackscrews

FINISH

02 Nickel

EQUIVALENT NO. OF SIGNAL CONTACTS

08, 10, 12, 14, 16, 18, 20, 22, 24, 28, 32, 36, 40, 44, 48

All dimensions in mm.

Datamate Mix-Tek Connectors

Male Metal Backshell

- ❖ Supplied as an accessory, to be used with existing male connectors.
- ❖ Can be fitted to either male vertical PCB connectors with board mount, or male cable connectors with panel mount jackscrews.
- ❖ Gives 360 degree shielding when mounted to a conductive panel and mated to a compatible female connector with metal backshell.

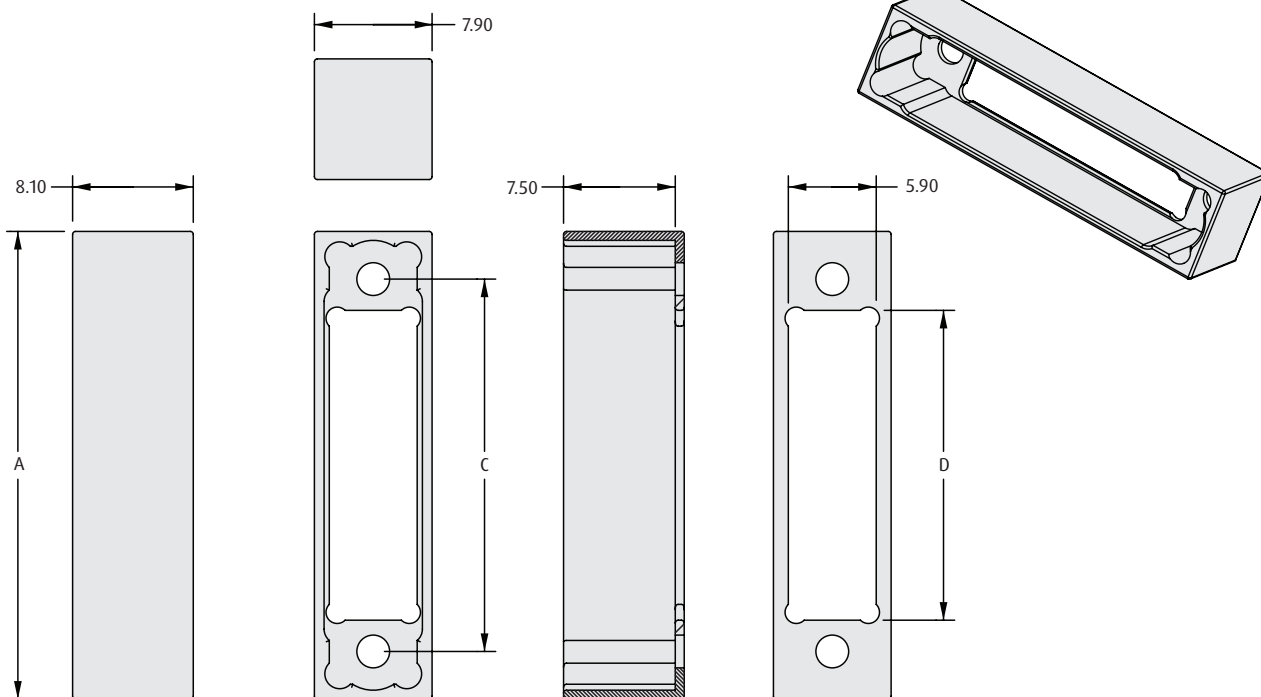


DATAMATE MIX-TEK

MALE

CALCULATION

A	$B + 13.7$
B	Equivalent no. of contacts - 2
C	$B + 7$
D	$B + 2.8$



HOW TO ORDER

M80 - 906 XX 02

SERIES CODE

FINISH

02 Nickel

EQUIVALENT NO. OF SIGNAL CONTACTS

08, 10, 12, 14, 16, 18, 20, 22, 24, 28, 32, 36, 40, 44, 48

All dimensions in mm.