

Gecko-SL

1.25mm pitch Screw-Lok Connectors

Secure & Robust Miniature Connectors for demanding applications

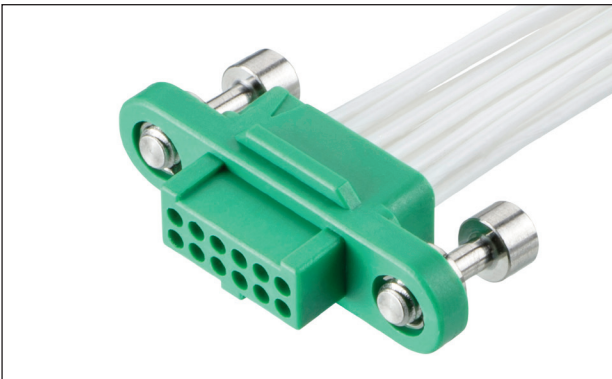
For applications that must not fail, Gecko-SL brings high-reliability connection at a miniature 1.25mm pitch. Fitted with screw-loks that are configured for Mate-Before-Lok, connection and disconnection is fast and simple to handle. An ideal choice for SWaP-C optimization (Size, Weight, Power and Cost).

Featuring cable-to-board, board-to-board and cable-to-cable in pin counts up to 50. Throughboard and Surface Mount designs for PCB flexibility are available, all packaged in Tape and Reel for automated assembly. Stainless steel screw-loks in both standard and reverse gender fixings (reverse fix) ensure a strong and secure connection.

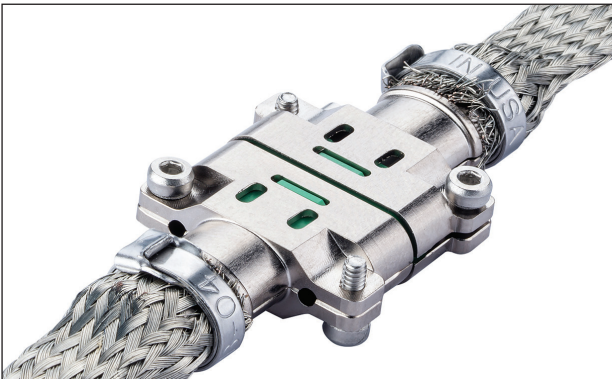
Lightweight metal hoods give additional cable protection and shielding from radio frequency Interference (RFI). Individual pre wired contacts and full cable assembly options complete the range for prototyping and pre-production simplicity.

Features and Benefits	
2A per contact (all electrically loaded; 2.8A per individual contact) at 1.25mm pitch	Excellent current capacity for a miniature connector, saving PCB real estate
Compact design – significant space saving over Micro-D	Up to 45% smaller and up to 75% lighter over existing equivalent industry standards, ideal for avionics
Horizontal male through-board connectors	For additional board edge to cable connection, with reduced total mated height
Mate before Lock in both standard and reverse fix screws	Quick and easy mating process
Low outgassing materials	Meets NASA and ESA requirements
Ready-made cable assemblies and pre wired contacts	Eliminate the tooling costs, training requirements and additional inspections
Robust design of 4 finger Beryllium Copper contact	Assures electrical contact in extreme shock and vibration conditions
Metal Backshells for cable and panel mount	Protect cables from wear and reduce RF / EM interference

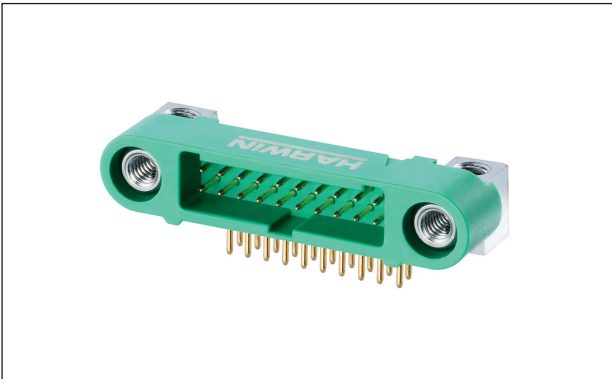
Key Applications	
Aviation	Avionic controls, guidance systems, engine controls, radar and tracking
Motorsport & Electric Vehicles	Navigation, AI, GPS and tracking equipment, communications and telemetry, ERS controls
Space	Satellites & CubeSats, radar, communications, launch systems
Defense & Security	UAVs, UUV and other ROV, ground communications, handheld portable equipment, rugged vehicle electronics



Female Cable Assembly with 12 contacts



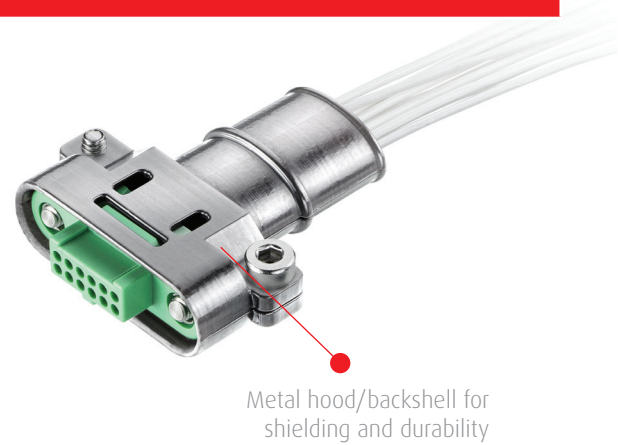
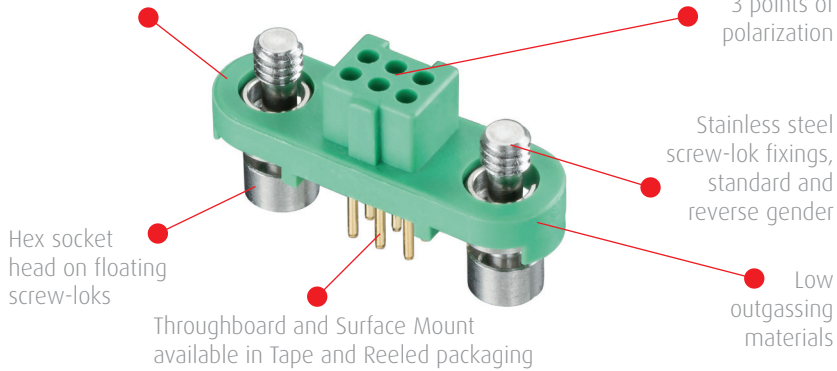
Metal backshells shown with full braiding



Male horizontal throughboard with 20 contacts

Product Features

Small size, lightweight



How to Order

G125 - XXX XX XX XX X

GENDER/TYPE

224	Female Cable Housing
324	Male Cable Housing
FV1	Female 3mm Throughboard Vertical
FS1	Female Surface Mount Vertical
MV1	Male 3mm Throughboard Vertical
MH1	Male 3mm Throughboard Horizontal
MS1	Male Surface Mount Vertical

TOTAL NO. OF CONTACTS

06, 10, 12, 16, 20, 26, 34, 50

FINISH/COLOR

05	Gold finish (PCB Connectors)
96	Green Housing (Cable Housings)

Check Technical Drawings for available combinations

PACKAGING

Blank	Loose (Cable Housings)
P	Tape & Reel strips (PCB Connectors)
R	Tape & Reeled (PCB Connectors)

FIXINGS

F0	No Screw-Lok (female for Backshells)
F1	Female Standard, Hex Socket Floating
F2	Female Reverse Fix, no Board Mount
F3	Female Reverse Fix, 5mm Board Mount
M1	Male Standard, no Board Mount
M2	Male Standard, 5mm Vert.Board Mount
M3	Male Reverse Fix, Hex Socket Floating
M4	Male Standard, Horizontal Board Mount
M5	Male Standard, Rear Panel Mount (cable)

Cable Contacts



G125-0010005
Female 26AWG
Crimp Contact



G125-0020005
Female 28-32AWG
Crimp Contact



G125-1010005
Male 26AWG
Crimp Contact



G125-1020005
Male 28-32AWG
Crimp Contact

Board Mount Accessories



G125-4500000B
Hex Nut



G125-4510000B
Slotted Nut



G125-4520000B
5mm Hex
Socket Bolt

Also Available

Crimp
Tooling

Insertion
Tooling

Dummy
Contacts

Custom Cable
Facility

Instruction
Sheets

Instruction
Videos

Expert
Advice

Gecko-SL Ready-Made Cable Assemblies

Secure & Robust Miniature Connectors for demanding applications

To save time and resources, Cable Assemblies from Harwin are supplied ready-to-use, fully tested and backpotted. No additional tooling or training is required, and extensive stocks eliminate time spent waiting for custom-made manufacturing and quality inspection.

Product Features

All cable assemblies electrically tested and inspected

Backpotting as standard on all cable assemblies

White 26AWG PTFE insulated cable, to BS 3G 210 Type A

6 to 50 contacts available, stocked in depth

Floating screw-lok option on female connector, with hex socket head

Low outgassing materials

Contact position 1 identifier

How to Order

G125 - X C1 XX 05 XX - XXXX XX

GENDER - FIRST END

F	Female
M	Male

TOTAL NO. OF CONTACTS

06, 10, 12, 16, 20, 26, 34, 50

FIXING - FIRST END

F0	No Screw-Lok (Female)
F1	Hex Socket Floating Screw-Lok (Female)
M1	Screw-Lok (Male)

TERMINATION - SECOND END

L	Loose cut end
F0	Female, No Screw-Lok
F1	Female, Hex Socket Floating Screw-Lok
M1	Male, Screw-Lok

CABLE LENGTH

0150	150mm
0300	300mm (double-ended)
0450	450mm (single-ended)

Note: Male-to-Female cables should be specified with the Male as the first end.

Specifications

Electrical		Mechanical & Environmental		Physical	
Current Rating	2A per contact	Mating Cycles	1,000	Housing	Glass filled PA4T, UL94V-0
Voltage Rating	450V AC/DC	Temperature Range	-65°C to +150°C	Contacts	Copper alloy, Gold plating
Maximum Voltage	600V AC/DC	Insertion force	2.8N max	Screw-loks	Stainless steel
Contact Resistance	25mΩ max	Withdrawal force	0.2N min	Cable	White 26AWG PTFE to BS 3G 210 Type A
Insulation Resistance	1GΩ min	Vibration	20G, 6 hours total		



Harwin Europe (Global Headquarters)

Portsmouth, Hampshire, UK

E: mis@harwin.co.uk

T: +44 (0)23 9231 4545

Harwin Inc (Americas)

New Albany, Indiana, USA

E: mis@harwin.com

T: +1 603 893 5376

Harwin Asia Pte Ltd (Asia, Australasia)

Singapore

E: mis@harwinasia.com

T: +65 6 779 4909