

Datamate T-Contact Female Power Contact for 2mm Pitch Hi-Rel

Pushing the boundaries on signal connectors

Harwin combines field proven Datamate J-Tek connectors with the T-Contact to extend the boundaries of power capacity with signal connector technology.

Recognising a distinct trend towards increased power, the T-Contact uses a patented, 6-finger design to deliver up to 8.5A per contact. It is machined from a single piece of Beryllium Copper, and gold plated to provide reliable performance in demanding applications.

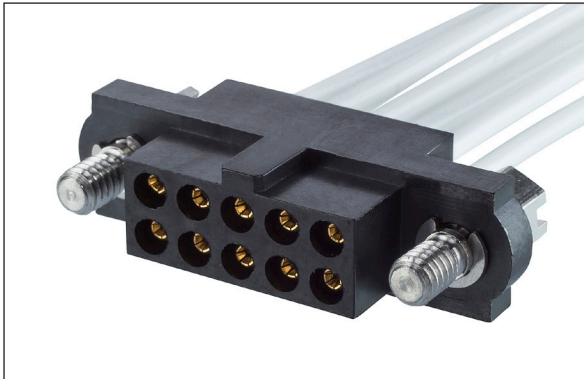
Cable housings are stocked in depth in selected sizes from 4 to 50 position, to provide fast delivery and greater flexibility. Compatible with all male J-Tek connectors, and no increase in size over 3A signal connectors.

Features and Benefits	
Up to 8.5A per contact	Allows for increased current capacity on a 2mm pitch system improving the Datamate SWaP (Size, weight and power) Ratio
Increased number of mating cycles, up to 1000 operations	Extended operating life of connectors when compared to existing contact system
60% more contact wipe when compared to existing signal contacts	Improves contact self-cleaning action and helps reduce surface contamination
Patented 6-finger contact design	Provides more contact points to improve resistance to shock and vibration
Dedicated stocked range of dual row housings with fixings and pre-cabled contacts	Fast turnaround on off-the-shelf options with a range of mating hardware for design flexibility
T-Contact is compatible with existing Datamate connectors, replacing the existing female signal crimps	Can be used in Mix-Tek, J-Tek, and L-Tek product ranges where female barrel crimp contacts are currently used - no change to male connectors required
Heavy Gold plating	0.76-1.00µm (30-40µ") Gold plating to meet US Military and Avionics requirements

Key Applications	
Aviation	Avionics controls, Engines, Radar, UAVs, In-flight systems
Motorsport and Transport	Navigation, GPS tracking systems, sensors, communications, telemetry
Energy	Oil, gas and renewable sources
Industrial	Drives and controls, robotics, motors
Space	Satellites, CubeSat, launch systems, radar and communications
Defence and Security	Power control modules, routers, radio communications, radar, actuators, camera systems



Up to 8.5A female barrel crimp contact



Fits all existing female signal crimp housings



Individual pre-cabled contacts fitted with 22AWG wire

Patent Pending

Product Features



Specifications					
Electrical		Mechanical		Physical	
Current Rating	8.5A max individual (at 25°C ambient, 3.5A max when all contacts electrically loaded)	No. of Operations	1000	Packaging (contact)	100 per bag
Working Voltage	800V AC/DC	Insertion Force	4N per contact	Housing	30% GF PPS, UL94V-0, black
Maximum Voltage	1200V AC/DC	Withdrawal Force	0.8N per contact	Contacts	Beryllium Copper, Gold over nickel finish
Contact Resistance	25mΩ Max	Operating Temperature Range	-55°C to +125°C	Fixings	Stainless steel
Insulation Resistance	10 ⁶ MΩ	Vibration	40G for 6 hours, 2 hours per axis	Wire Type	22AWG, PTFE insulation
		Shock	100G for 6ms		

Patent Pending

How to Order

T-Contact sold in 100 pcs per bag



ORDER CODE

M80-2060005

Pre-Cabled Contacts



M80 - FP1 - XXXX - X - 94

SERIES CODE

CABLE LENGTH

0150	150mm
0300	300mm
0450	450mm

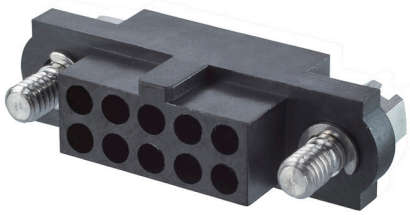
CABLE COLOR

94 White

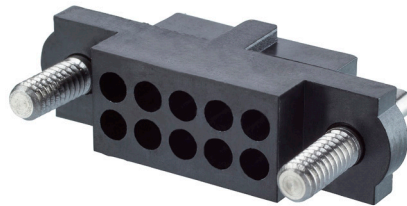
TYPE

F	Double Ended
L	Single Ended

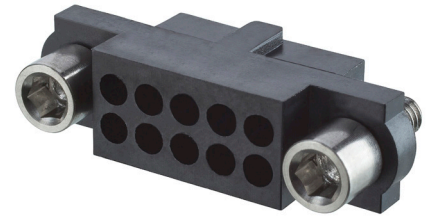
Housings



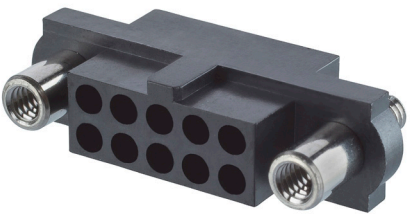
M80-413xx98
Hex slotted jackscrew



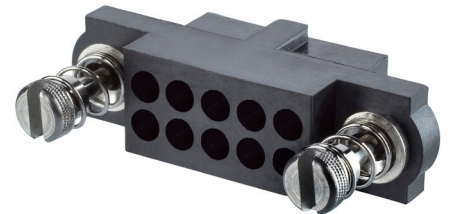
M80-417xx98
Guide pin with panel mount



M80-414xx98
Hex socket jackscrew



M80-415xx98
Reverse fix jackscrew



M80-418xx98
101Lok

M80 - 4 - XX - XX - 98

SERIES CODE

NO. OF CONTACT POSITIONS

04 to 50 (Even numbers only)

JACKSCREW FIXING STYLE

13	Hexagon Slotted jackscrews
14	2mm A/F Hex socket jackscrews
15	Reverse fix jackscrews with 3.5mm panel mount stud
17	Guide pin with 5mm panel mount stud
18	101Lok quarter-turn fixings

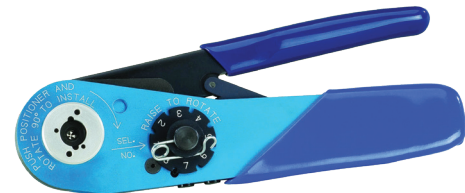
Panel Mount Nuts



M80-2130000B M80-2430000B

Related Products:

- Cable assembly facility
- Expert advice at harwin.com/contact
- Dummy signal contacts
- Crimp & Insertion tooling



Contact us

Europe, Middle East & Africa
Portsmouth, Hampshire, UK
E: technical@harwin.com
T: +44 (0)23 9231 4545

Americas
Salem, New Hampshire, USA
E: technical-us@harwin.com
T: +1 603 893 5376

Asia Pacific
Singapore
E: technical-asia@harwin.com
T: +65 6 779 4909