

High-Reliability Datamate Rear Panel Mount

Internally mounted for added protection

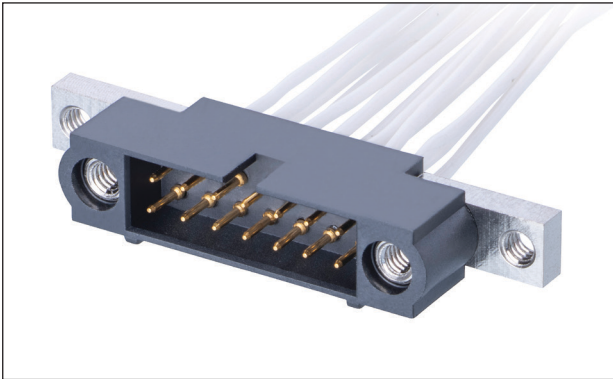
Using Datamate as a cable-to-panel product is simplified with these fixing options.

Panel Mounted Cable

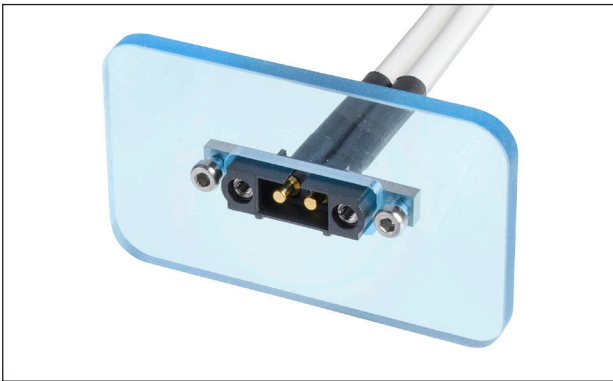
The extended jackscrew lugs enable mounting on the rear of a panel, keeping much of the connector safe behind the enclosure wall. Available in 2mm pitch signal cable connector kits, or 4mm pitch housings for power and coax cable contacts. Fully compatible with existing standard gender jackscrews in the Datamate range.

Panel Mounted PCB

Horizontal or right-angle connectors with the rear panel mount backshell assembled can be additionally fixed to the rear of an external panel. Including a grounding plane and mating a fully shielded cable assembly will also give full 360 degree shielding.



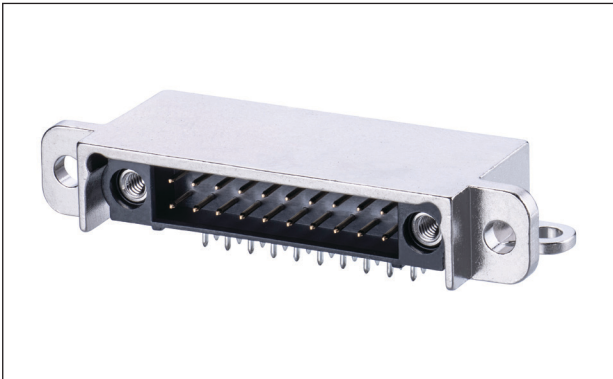
Datamate J-Tek male cable assembly



Datamate Power male cable assembly with panel

Features and Benefits	
Designed for simple panel mounting	Just add M2 bolts to secure to any depth of enclosure panel
Rear mount on inside of enclosure	Added protection from external forces
Compatible for mating with standard gender fixings	No need to re-specify the mating connector
Meets existing Datamate specifications	Ideally suited for high vibration environments and multiple insertions
Stainless Steel Jackscrews	Long-lasting durability and reliability
Horizontal shield for PCB connections	Easy to mount over any Datamate J-Tek horizontal throughboard or SMT connector

Key Applications	
Aviation	UAVs, Avionics, Aircraft Infotainment, Radar, In-flight Facilities
Motorsport and Transport	Navigation, Tracking, GPS, Control Systems
Energy	Oil, Gas and Renewable Sources, E-vehicles
Industrial	Drives and Controls, Robotics
Space	Satellites, CubeSats, Launch Systems, Radar & Communications
Defense and Security	WiFi Antennas, Mobile and Radio Communications



Datamate J-Tek with horizontal metal backshell

Product Features

Compatible with standard Datamate J-Tek and Power/Coax connectors

Signal or power /coax options for male cable connection

Use M2 bolts to secure to any panel or enclosure

Stainless steel jackscrews ensure strong and secure mating

Use with PCB ground plane for full 360 degree shielding

Fix base lugs to PCB

Compatible with Throughboard and SMT, with or without board-mount fixings

Fix front lugs to rear of panel or enclosure

Specifications

Electrical		Mechanical		Physical	
Current Rating (J-Tek)	3.3A max (single contact) 3A max (all contacts)	No. of operations	500 cycles	Housing	Thermoplastic UL94V-0
Current Rating (Mix-Tek)	Dependent on contact specified	Vibration	10G for 6 hours, 2 hours per axis	Contacts (J-Tek)	Copper alloy, Gold plated
Maximum Voltage	1,200V AC/DC	Shock	100G for 6ms	Jackscrews	Stainless Steel
Insulation Resistance	100MΩ min	Temp Range	-55°C to +125°C	Backshell	Aluminium Alloy, Nickel plated

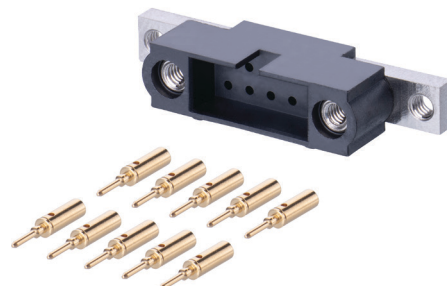
How to Order

Datamate J-Tek – Signal Connector Kit

M80 – 5C1 XX 05MU

TOTAL NO. OF CONTACTS

04 to 50 (even numbers only)



Connector is supplied as a kit with a housing and the applicable number of contacts. Contacts are compatible with 24-28 AWG cable.

Datamate Power or Coax – Housings Only

M80 – 273MU XX – 00 – 00

TOTAL NO. OF CONTACTS

02, 03, 04, 06, 08



Connector is supplied as housing only. Compatible with all Power and Coax Contacts.

Datamate Horizontal Backshell – Rear Panel Mount version

M80 – 905 XX 02

SIZE

See Table Below



Size Table

Size	Total No. of Signal contacts (J-Tek)	No. of Power or Coax contacts (Mix-Tek)
04	4	
06	6	
08	8	2
10	10	
12	12	3
14	14	
16	16	4
18	18	
20	20	5
22	22	
24	24	6
26	26	

Size	Total No. of Signal contacts (J-Tek)	No. of Power or Coax contacts (Mix-Tek)
28	28	7
30	30	
32	32	8
34	34	
36	36	9
38	38	
40	40	10
42	42	
44	44	11
46	46	
48	48	12
50	50	

Check www.harwin.com for availability in all styles.

Mounting Accessories



M80-2430000B
Hex Nut



M80-2130000B
Slotted Nut



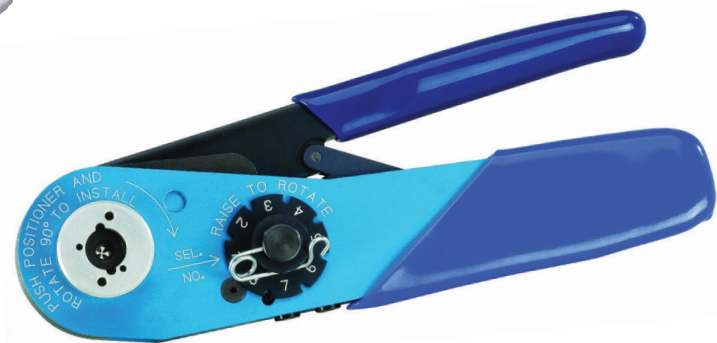
M80-2320000B
5mm Hex Socket Bolt



M80-2270000B
5mm Slotted Bolt

Related Products:

- Cable assembly facility
- Dummy signal contacts
- Crimp & insertion tooling
- Metal backshells
- Slotted Screwdriver and Hex Drivers



Contact us

Europe, Middle East & Africa
Portsmouth, Hampshire, UK
E: technical@harwin.com
T: +44 (0)23 9231 4545

Americas
Salem, New Hampshire, USA
E: technical-us@harwin.com
T: +1 603 893 5376

Asia Pacific
Singapore
E: technical-asia@harwin.com
T: +65 6 779 4909