

# Products in Action

## Motor Controller for Refrigeration Units

### Application:

Control PCB for compressor/alternator management.

### Background:

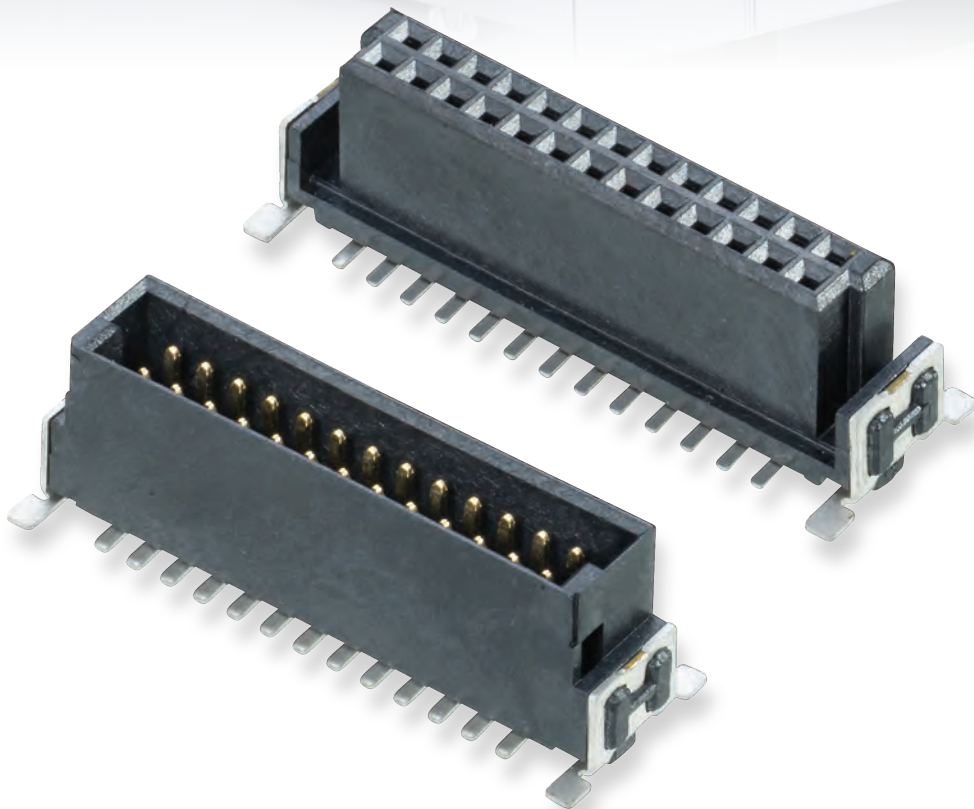
Board-to-board connection for industrial-level environments, part of the management system attached to low-temperature or temperature control systems.

### The Challenge:

Customer needed a compact durable connection suitable for a number of end products and markets, with enough vibration resistance for a commercial coach AC system.

### Harwin Solution:

Archer Kontrol is the right combination of durable industrial connection in a compact package, with commercial-level pricing and supplied ready for automated assembly.



**HARWIN**