

Products in Action

EV Inverter

Application:

Electric Vehicle drive system.

Background:

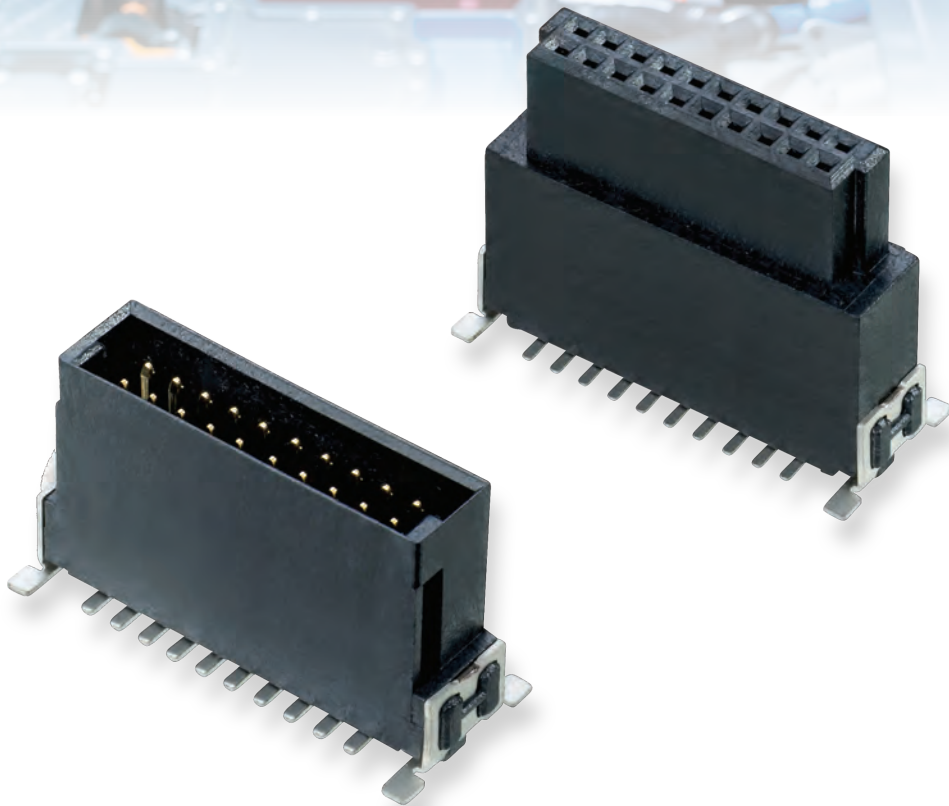
The inverter converts the DC battery power to AC for the car's electric motor. The control boards in this unit require board-to-board connections, durable in nature, with good temperature range and commercial pricing.

The Challenge:

The customer required a dependable supply of durable industrial connectors, with competitive pricing and long-term reliability.

Harwin Solution:

Archer Kontrol is rated up to 125°C, and is rated for vibration resistance. The durable industrial connector gives high performance at the right price level for automotive.



HARWIN