

# Customer Information Sheet

DRAWING No.: H3136-21

SHEET 2 OF 2

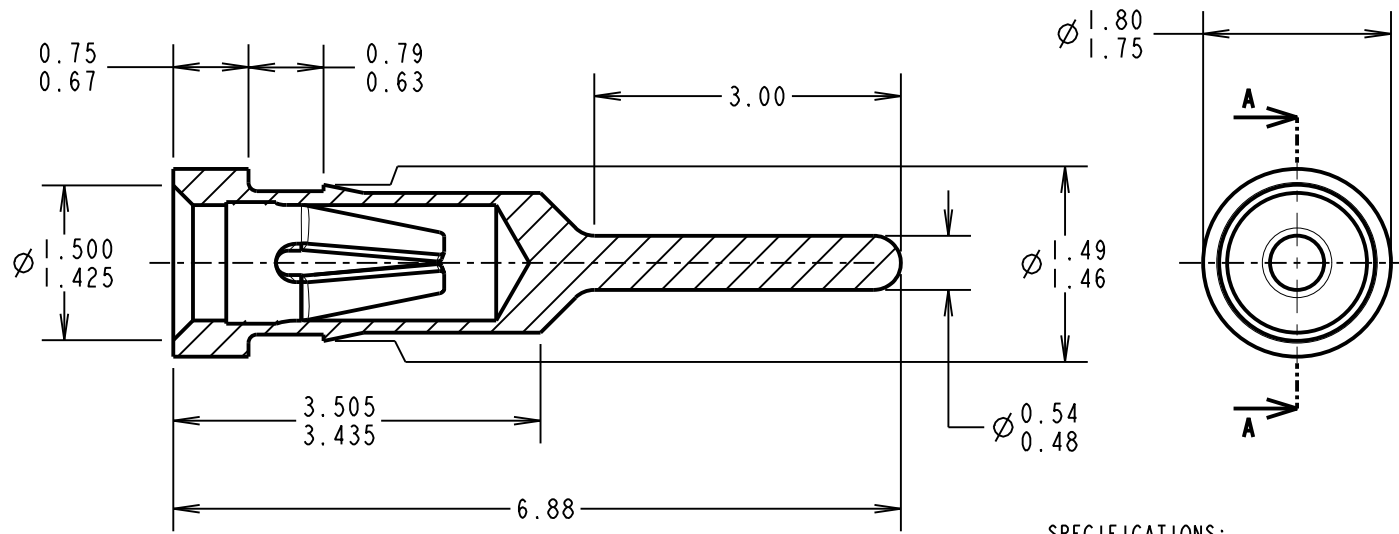
IF IN DOUBT - ASK

©

NOT TO SCALE

THIRD ANGLE PROJECTION

ALL DIMENSIONS IN mm



SECTION A-A

ORDER CODE:

**H3136-21**

FINISH:

21 = TIN SHELL, GOLD FLASH CLIP

**SPECIFICATIONS:**

**MATERIALS:**

CONTACT SHELL = BRASS  
CONTACT CLIP = BERYLLIUM COPPER

**FINISH:**

H3136-05 = 0.1μ GOLD SHELL, GOLD FLASH CLIP  
H3136-21 = 5μ TIN SHELL, GOLD FLASH CLIP  
H3136-25 = 4μ 100% TIN SHELL, 2μ GOLD CLIP  
H3136-46 = 4μ 100% TIN SHELL, 1.5μ TIN CLIP

**ELECTRICAL:**

CURRENT RATING = 1.5A MAX  
CONTACT RESISTANCE = 23 mΩ MAX  
INSULATION RESISTANCE = 100 MΩ MIN

**MECHANICAL:**

**DURABILITY:**  
05, 21, 25, = 1000 OPERATIONS  
46 = 50 OPERATIONS  
INSERTION FORCE (∅0.46mm GAUGE) = 5N MAX  
WITHDRAWAL FORCE (∅0.46mm GAUGE) = 0.5N MIN

**ENVIRONMENTAL:**

TEMPERATURE RANGE = -55°C TO +125°C

**NOTES:**

1. RECOMMENDED PCB MOUNTING HOLE SIZE = ∅1.44 -1.39mm.
2. RECOMMENDED MATING PIN SIZE = ∅0.46-0.51mm.
3. PIN LENGTH = 3.25mm MAX.
4. MAXIMUM CONTACT DEPTH = 2.65mm.
5. FOR COMPLETE SPECIFICATION, SEE COMPONENT SPECIFICATION C004XX (LATEST ISSUE)

SF	19	06.03.13	11959
NAME	ISS.	DATE	C/NOTE
APPROVED:		S.FLOWER	
CHECKED:		S.BENNETT	
DRAWN:		J. CLAY	
CUSTOMER REF.:			
ASSEMBLY DRG:			

**HARWIN**

www.harwin.com  
technical@harwin.com

THIS DRAWING AND ANY INFORMATION OR DESCRIPTIVE MATTER SET OUT HEREON ARE CONFIDENTIAL AND COPYRIGHT PROPERTY OF THE HARWIN GROUP AND MUST NOT BE DISCLOSED, LOANED, COPIED OR USED FOR MANUFACTURING, TENDERING OR FOR ANY OTHER PURPOSE WITHOUT THEIR WRITTEN PERMISSION.

**TOLERANCES**

X. = ±1mm  
X.X = ±0.25mm  
X.XX = ±0.10mm  
X.XXX = ±0.01mm

ANGLES = ±5°  
UNLESS STATED

**MATERIAL:**

SEE ABOVE

FINISH: SEE ABOVE

S/AREA: mm<sup>2</sup>

**TITLE:**

I.C. SOCKET ASSEMBLY

**DRAWING NUMBER:**

**H3136-21**

SHT  
3  
OF  
3

# Customer Information Sheet

DRAWING No.: H3136-XX

SHEET 3 OF 3

IF IN DOUBT - ASK

(C)

NOT TO SCALE

THIRD ANGLE PROJECTION

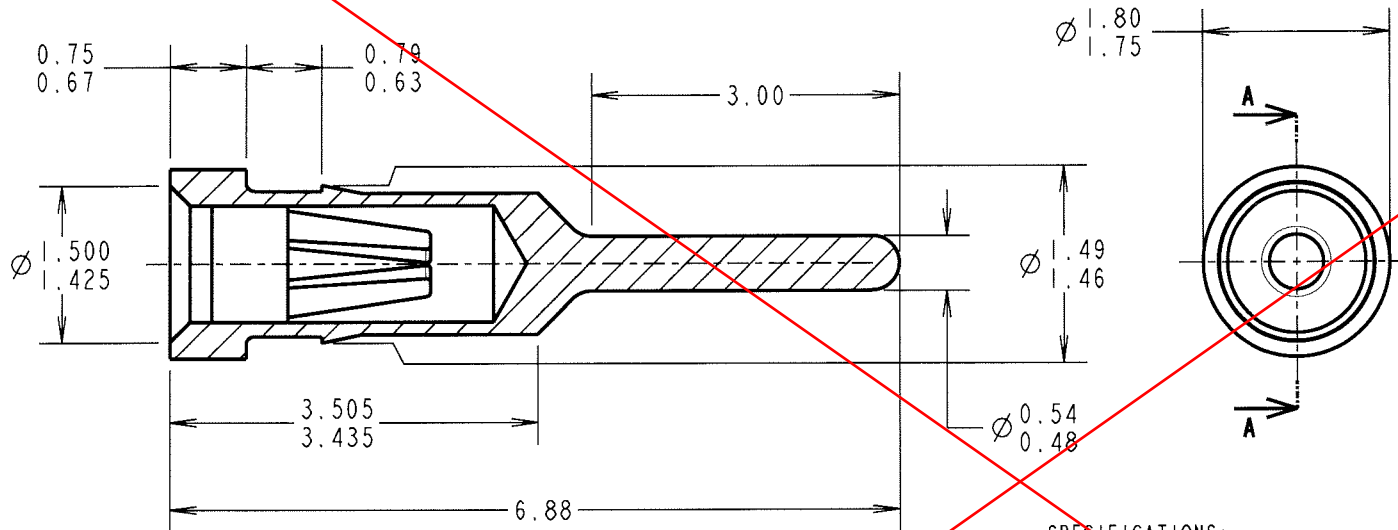
ALL DIMENSIONS IN mm

ORDER CODE:

H3136-XX

FINISH:

- 05 = GOLD SHELL, GOLD FLASH CLIP
- 21 = TIN SHELL, GOLD FLASH CLIP
- 25 = 100% TIN SHELL, 2μ GOLD CLIP
- 46 = 100% TIN SHELL, 1.5μ TIN CLIP



SECTION A-A

**OBSOLETE**

**SPECIFICATIONS:**

**MATERIALS:**

- CONTACT SHELL = BRASS
- CONTACT CLIP = BERYLLIUM COPPER

**FINISH:**

- H3136-05 = 0.1μ GOLD SHELL, GOLD FLASH CLIP
- H3136-21 = 5μ TIN SHELL, GOLD FLASH CLIP
- H3136-25 = 4μ 100% TIN SHELL, 2μ GOLD CLIP
- H3136-46 = 4μ 100% TIN SHELL, 1.5μ TIN CLIP

**ELECTRICAL:**

- CURRENT RATING = 1.5A MAX
- CONTACT RESISTANCE = 23 mΩ MAX
- INSULATION RESISTANCE = 100 MΩ MIN

**MECHANICAL:**

- DURABILITY:**
- 05, 21, 25, = 1000 OPERATIONS
- 46 = 50 OPERATIONS
- INSERTION FORCE (∅0.46mm GAUGE) = 5N MAX
- WITHDRAWAL FORCE (∅0.46mm GAUGE) = 0.5N MIN

**ENVIRONMENTAL:**

- TEMPERATURE RANGE = -55°C TO +125°C

**NOTES:**

1. RECOMMENDED PCB MOUNTING HOLE SIZE = ∅1.44 - 1.39mm.
2. RECOMMENDED MATING PIN SIZE = ∅0.46-0.51mm.
3. PIN LENGTH = 3.25mm MAX.
4. MAXIMUM CONTACT DEPTH = 2.65mm.
5. FOR COMPLETE SPECIFICATION, SEE COMPONENT SPECIFICATION C004XX (LATEST ISSUE)

JMB	18	12.07.05	8627
NAME	ISS.	DATE	C/NOTE
APPROVED: <i>[Signature]</i>			
CHECKED: <i>[Signature]</i>			
DRAWN: J. CLAY			
CUSTOMER REF.:			
ASSEMBLY DRG:			

**HARWIN**

THIS DRAWING AND ANY INFORMATION OR DESCRIPTIVE MATTER SET OUT HEREON ARE CONFIDENTIAL AND COPYRIGHT PROPERTY OF THE HARWIN GROUP AND MUST NOT BE DISCLOSED, LOANED, COPIED OR USED FOR MANUFACTURING, TENDERING OR FOR ANY OTHER PURPOSE WITHOUT THEIR WRITTEN PERMISSION.

**TOLERANCES**

- X. = ±1mm
- X.X = ±0.25mm
- X.XX = ±0.10mm
- X.XXX = ±0.01mm

ANGLES = ±5°

UNLESS STATED

**MATERIAL:**

SEE ABOVE

**FINISH:**

SEE ABOVE

**S/AREA:**

mm<sup>2</sup>

**TITLE:**

I.C. SOCKET ASSEMBLY

**DRAWING NUMBER:**

H3136-XX

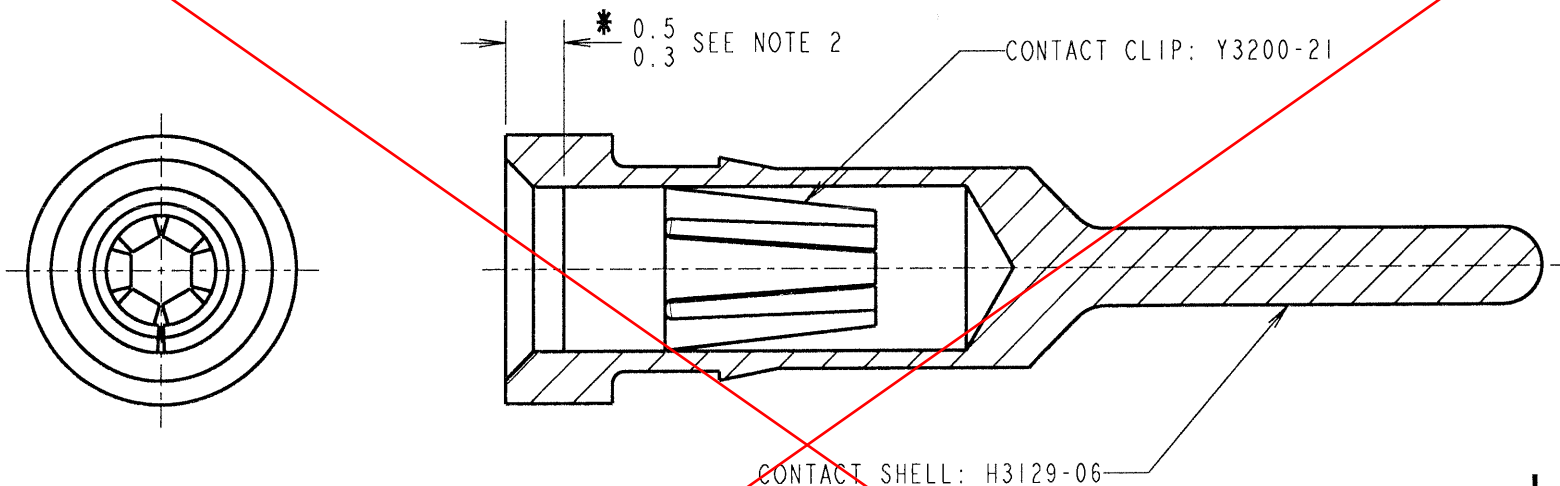
SHT

3 OF 3

HARWIN INC  
U.S.A.  
TEL: (812) 542 2540  
FAX: (812) 542 2541

HARWIN PLC  
U.K.  
TEL: 023 9231 4545  
FAX: 023 9231 4590

HARWIN PTE  
SINGAPORE  
TEL: 65 6779 4909  
FAX: 65 6779 3868

**OBSOLETE**

JMB	11	14.11.06	9559
JC	10	10.10.90	1713
NAME	ISS.	DATE	C/NOTE
APPROVED: <i>JMB</i>			
CHECKED: <i>JMB</i>			
DRAWN:		JM BROOKES	
CUSTOMER REF.:			
ASSEMBLY DRG:			

## NOTES:



- ALL DIMENSIONS AND NOTES MARKED \* ARE CRITICAL AND MUST BE CHECKED IN ACCORDANCE WITH WORK INSTRUCTION WI-35.
- CONTACT CLIP TO BE UNDER-FLUSH WITH BOTTOM OF LEAD-IN CHAMFER AS WELL AS WITHIN TOLERANCE SHOWN.
- FINISH:- SHELL = 100% TIN OVER NICKEL, CLIP = GOLD OVER NICKEL.

**HARWIN**

HARWIN USA TEL: 603 893 5376 FAX: 603 893 5396 mis@harwin.com	HARWIN Europe (UK) TEL: 023 9231 4545 FAX: 023 9231 4590 mis@harwin.co.uk	HARWIN Asia TEL: +65 6 779 4909 FAX: +65 6 779 3868 mis@harwin.com.sg
--	--	--

THIS DRAWING AND ANY INFORMATION OR DESCRIPTIVE MATTER SET OUT HEREON ARE CONFIDENTIAL AND COPYRIGHT PROPERTY OF THE HARWIN GROUP AND MUST NOT BE DISCLOSED, LOANED, COPIED OR USED FOR MANUFACTURING, TENDERING OR FOR ANY OTHER PURPOSE WITHOUT THEIR WRITTEN PERMISSION.

TOLERANCES  
 X. =  $\pm 1$ mm  
 X.X =  $\pm 0.25$ mm  
 X.XX =  $\pm 0.10$ mm  
 X.XXX =  $\pm 0.01$ mm  
 ANGLES =  $\pm 5^\circ$   
 UNLESS STATED

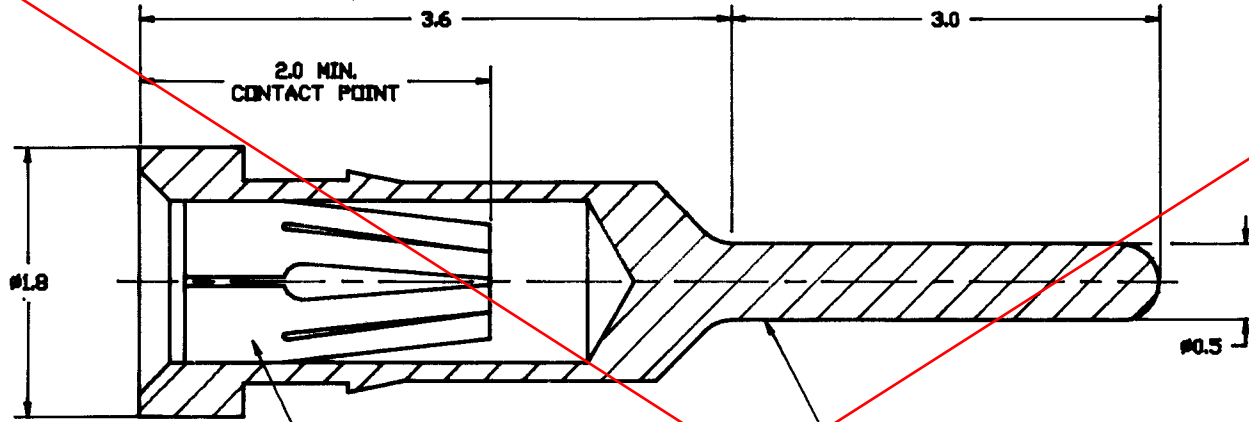
MATERIAL:  
 SEE ABOVE  
 FINISH: SEE NOTE 3  
 S/AREA: mm<sup>2</sup>

TITLE:  
 I.C. SOCKET ASSEMBLY

DRAWING NUMBER:  
**H3136S21**

SHT  
 OF

CUSTOMER INFORMATION SHEET



**CLIP**  
 MATERIAL: BERYLLIUM COPPER  
 (CA172) MILL HARDENED  
 FINISH: SEE TABLE

**SHELL**  
 MATERIAL: BRASS CZ124  
 TO BS2874  
 FINISH: SEE TABLE

**OBSOLETE**

2	10.10.90	---
1	27.9.90	---
ISS.	DATE	CHANGE
APPD.	<i>[Signature]</i>	
CHKD	<i>[Signature]</i>	
DRAWN	D.FAIRS	
CUSTOMER REF.		
COMPUTER No.		
ASSY. DRAWING		
ALL P.G.A SOCKETS		
DRAWING NUMBER		H3136SXX
		(SHEET 2)

H3136S30	0.76u GOLD OVER NICKEL.	3.5/5.0u 90/10 TIN/LEAD OVER NICKEL.
DRAWING NUMBER	CLIP FINISH	SHELL FINISH



FITZHERBERT RD.; PORTSMOUTH, U.K. PO6 1RT  
 TELEPHONE:-  
 0705 370451 (SALES) FAX:- 0705 324010  
 0705 388755 (WORKS) TELEX:- 86125

MATERIAL: SEE ABOVE  
 TITLE: I.C SOCKET ASSEMBLY

TOLERANCES:-  
 X. ± 1mm  
 X.X ± 0.25mm  
 X.XX ± 0.1mm  
 X.XXX ± 0.01mm  
 ANGLES ± 1°

FINISH SEE ABOVE  
 S/AREA mm<sup>2</sup>  
 DIMS IN MM  
 SCALE: 1 N.T.S.