



RELIABILITY JUST GOT SMALLER

Harwin's Gecko (G125 series) connectors provide a low profile, dual row cable-to-board and board-to-board interconnect solution, ideally suited for stacking and cable mating in areas where PCB real estate is at a premium.

With space and weight a consideration for many high-reliability applications, G125 connectors are designed to offer high performance in a miniature package. Pin spacing of 1.25mm and up to 50 contacts per connector, offers dense pin counts in a small package. This design means that G125 connectors achieve a 35% space saving over other high-performance connectors such as Micro-D. The connectors also accommodate 2A per contact.

Tested and proven to allow high performance in extreme conditions, the G125 family can operate within a wide temperature range (-65°C / +150°C) and under extreme vibration (Z axis 100g 6ms). This high performance is made possible by Harwin's four-finger patented (pending*) Copper Alloy Contact.

* Patent Pending - UK 1205109.0

Features

- Pin spacing of 1.25mm
- Up to 50 contacts per connector
- 35% space saving over other high-performance connectors
- 2A per contact



How To Buy

www.harwin-gecko.com



➤ Materials

Mouldings:	Glass-filled thermoplastic UL94V-0
Female Contacts:	Copper Alloy
Male Contacts:	PCT / SMT: Phosphor Bronze
	Crimp: Brass
Finish:	Gold

➤ Electrical

Current (individual contacts in isolation):	At 25°C 2.8A max
All contacts simultaneously:	At 25°C 2.0A max
Working Voltage	
(at sea level 1006 mbar):	450V d.c. or a.c. peak
(at altitude 44mbar)	250V d.c. or a.c. peak
Proof voltage	
(at sea level 1013 mbar):	600V d.c. or a.c. peak
Contact resistance (initial):	20 mΩ max
Contact resistance (after conditioning):	25 mΩ max
Insulation resistance (initial):	10 GΩ min at 500V d.c.
Insulation resistance (after conditioning):	>1 GΩ min at 500V d.c.

➤ Mechanical

Durability:	1000 operations
Mating forces (per contact pair):	
Insertion force:	2.8N max
Withdrawal force:	0.2N min
Contact retention in moulding:	6N min

➤ Environmental

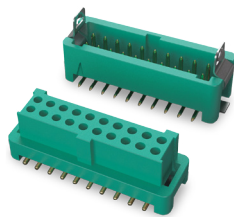
Environmental classification:	65/150/96 hours at 95% RH
Operational temperature:	- 65°C to 150°C
* Vibration sensitivity:	10Hz to 2000Hz, 1.5mm, 198mm/s ² (20G). duration 2h
* Bump severity:	390m/s ² (40G), 4000± 10 bumps
* Shock severity:	981m/s ² (100G) for 6ms
* Acceleration severity:	490m/s ² (50G)

* Tested with latched connectors

All preferred sizes of this range are held in stock.
Check www.harwin.com for availability.

Keyway polarisation points

3 polarising points on each component prevent mis-mating.



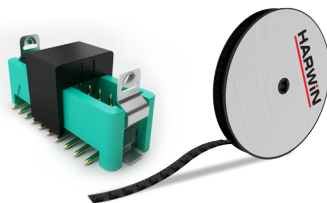
Four Finger Beryllium Copper Contact

Unique patent pending high-reliability contact design ensures signal integrity under extremes of bump, vibration and shock.



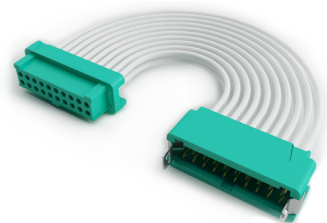
Packaged in Tape & Reel

Packed in industry standard tape & reel packaging for automated assembly and also available as cut strips of 10 pieces.



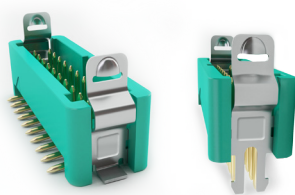
Pre-assembled cable configurations

Cable connectors available in a variety of layouts featuring male and female single and double ended in a variety of standard lengths.



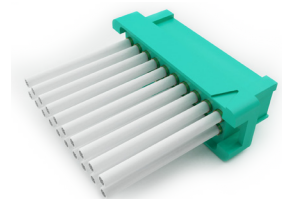
Combined Latching & PCB retention system

Optional latches allow simple and fast de-latching and require no special tooling. Solder tabs for SMT and barbs for PC Tail versions ensuring retention to the PCB.



No. 1 Position identified

Housings are clearly marked with identifier for fast visual inspection.



Potting Wall

Cable connectors feature a rear potting wall adding an extra level of strain relief.



Environmentally Friendly Materials

Mouldings are manufactured from halogen & Red Phosphorus free, glass-filled thermoplastic, an environmentally friendly material. All G125 connectors are RoHS compliant.

