

# Customer Information Sheet

DRAWING No.: G125-XXXXX05XX-XXXXXX

IF IN DOUBT - ASK

©

NOT TO SCALE

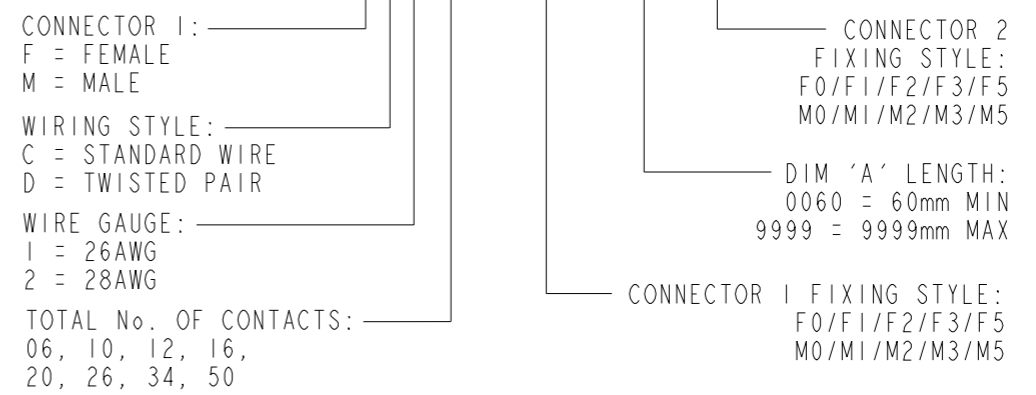
THIRD ANGLE PROJECTION

ALL DIMENSIONS IN mm

TABLE 1: CONFIGURATIONS & BILL OF MATERIALS																						
ORDER CODE CONFIGURATIONS						BOM ITEM No.																
G125-XXXXX05XX-XXXXXX						1	2	3	4	5												
						CONNECTOR 1 (SEE ORDER CODE FOR TOTAL No. OF CONTACTS)	PTFE WIRE	CONNECTOR 1 CONTACT (SEE ORDER CODE FOR QTY.)	CONNECTOR 2 CONTACT (SEE ORDER CODE FOR QTY.)	CONNECTOR 2 (SEE ORDER CODE FOR TOTAL No. OF CONTACTS)												
G125	-	FC	1	XX	05	F0	-XXXX	F0	STANDARD	FEMALE SIGNAL	FEMALE SIGNAL	F1	WHITE WIRE (SEE C049XX)	26AWG: G125-0010005	26AWG: G125-0010005	F2	G125-224XX9600 G125-224XX96F1 G125-224XX96F2 G125-224XX96F3 G125-224XX96F5	G125-224XX9600 G125-224XX96F1 G125-224XX96F2 G125-224XX96F3 G125-224XX96F5	F3	F5		
		FD				XX		F3				F5										
		MC				XX		M0				M1				M2					M3	M5
MD	XX	M0	M1	M2	M3	M5	F0	TWISTED PAIRS	MALE SIGNAL	MALE SIGNAL	26AWG: G125-1010005	26AWG: G125-1010005	28AWG: G125-0020005	28AWG: G125-0020005	2 TURNS PER INCH: WHITE & RED (SEE C049XX)	G125-324XX9600 G125-324XX96M1 G125-324XX96M2 G125-324XX96M3 G125-324XX96M5	G125-324XX9600 G125-324XX96M1 G125-324XX96M2 G125-324XX96M3 G125-324XX96M5	28AWG: G125-1020005	28AWG: G125-1020005	3 TURNS PER INCH: WHITE & GREEN (SEE C049XX)	G125-224XX9600 G125-224XX96F1 G125-224XX96F2 G125-224XX96F3 G125-224XX96F5	G125-224XX9600 G125-224XX96F1 G125-224XX96F2 G125-224XX96F3 G125-224XX96F5

### ORDER CODE:

G125-XXXXX05XX-XXXXXX



### NOTES:

1. FOR COMPLETE SPECIFICATION, INCLUDING WIRE TYPE AND GAUGE SEE COMPONENT SPECIFICATIONS C125XX & C049XX (LATEST ISSUES).
2. FOR POTTING COMPOUND AND WIRE TYPE SEE C049XX COMPONENT SPECIFICATION.
3. SEE SHEET 7 FOR ASSEMBLIES WITH STANDARD WIRING CONFIGURATIONS.
4. SEE SHEET 8 FOR ASSEMBLIES WITH TWISTED PAIR WIRING CONFIGURATIONS.
5. SEE SHEET 9 FOR HARDWARE FIXING INFORMATION.
6. FOR ALL HOUSING DIMENSIONS, SEE RESPECTIVE DRAWINGS FOR BOM ITEMS 1 & 5.
7. CABLE ASSEMBLIES ARE BULK PACKED IN BAGS.
8. CUSTOM LENGTH CABLE ASSEMBLIES CAN BE PRODUCED FROM 60mm TO 9999mm.

RTP	I	17.01.23	32231
NAME	ISS.	DATE	CN/CO
APPROVED: A.BOXALL			
CHECKED: M.RUDKIN			
DRAWN: R.PORTLOCK			
CUSTOMER REF.:			
ASSEMBLY DRG:			



THIS DRAWING AND ANY INFORMATION OR DESCRIPTIVE MATTER SET OUT HEREON ARE CONFIDENTIAL AND COPYRIGHT PROPERTY OF THE HARWIN GROUP AND MUST NOT BE DISCLOSED, LOANED, COPIED OR USED FOR MANUFACTURING, TENDERING OR FOR ANY OTHER PURPOSE WITHOUT THEIR WRITTEN PERMISSION.

**TOLERANCES**  
 X. = ±1mm  
 X.X = ±0.50mm  
 X.XX = ±0.20mm  
 X.XXX = ±0.01mm  
**ANGLES = ±5°**  
 UNLESS STATED

**MATERIAL:**  
 SEE ABOVE  
**FINISH:** SEE ABOVE  
**S/AREA:** mm<sup>2</sup>

**TITLE:**  
 GECKO SL  
 CABLE ASSEMBLY  
**DRAWING NUMBER:**  
 G125-XXXXX05XX-XXXXXX  
 SHT 6 OF 9

# Customer Information Sheet

DRAWING No.: G125-XXXXX05XX-XXXXXX

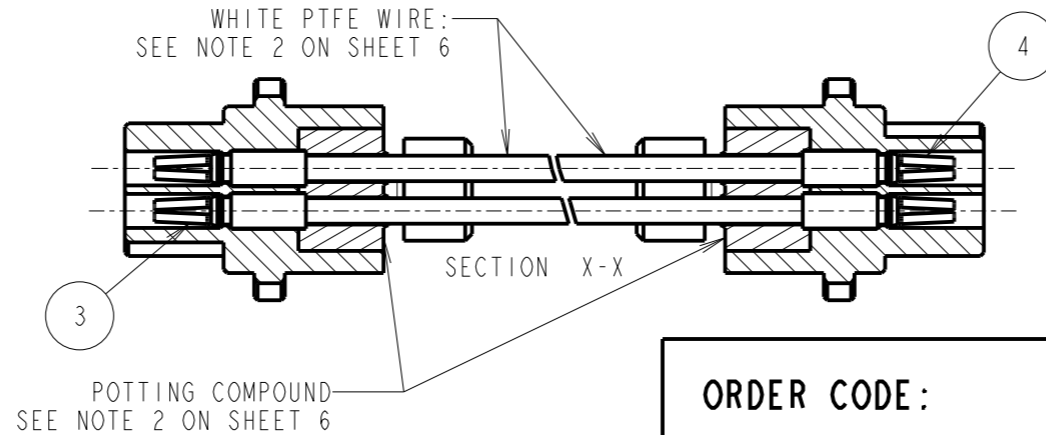
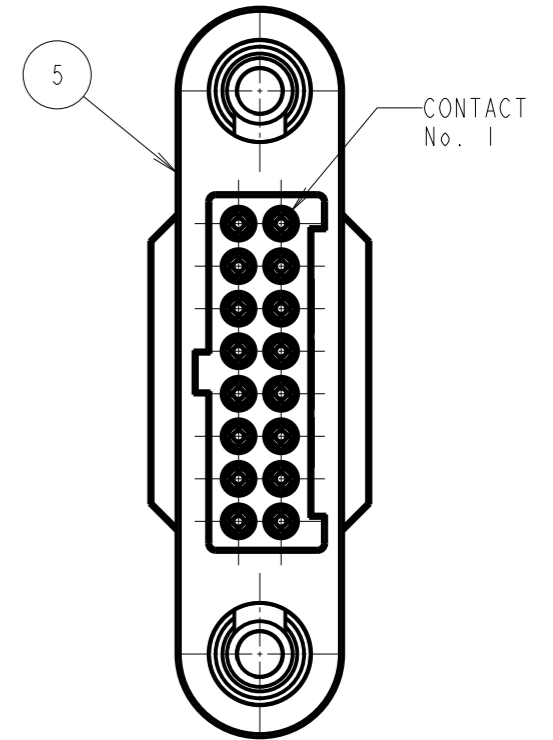
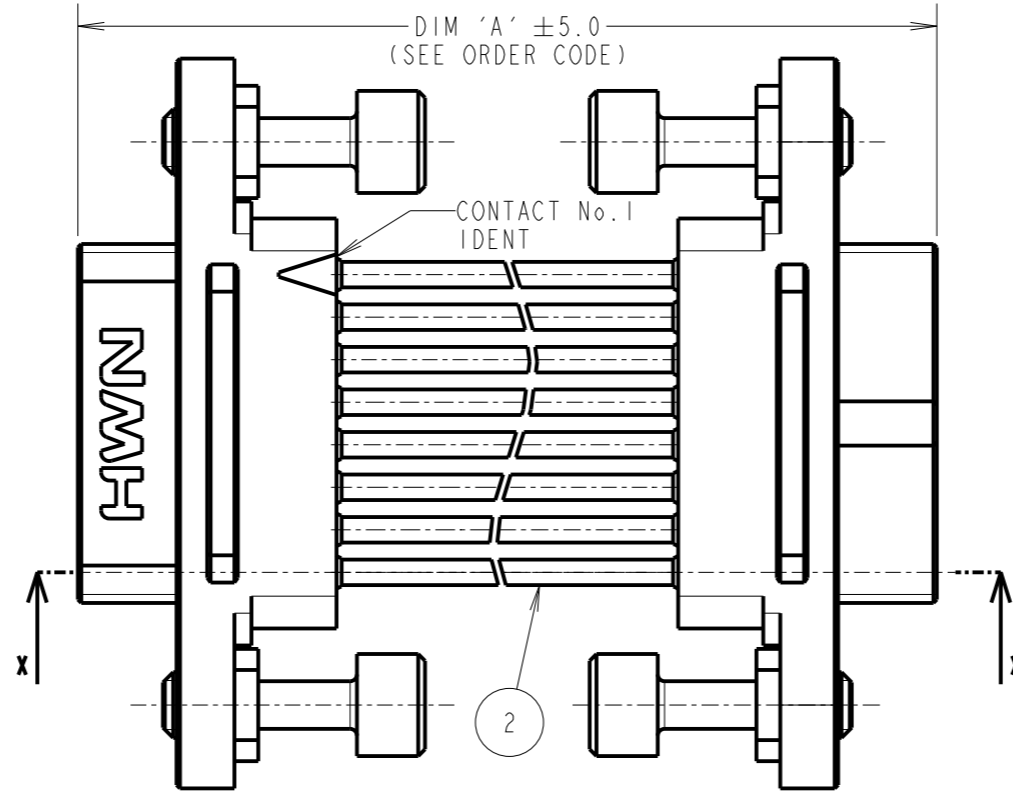
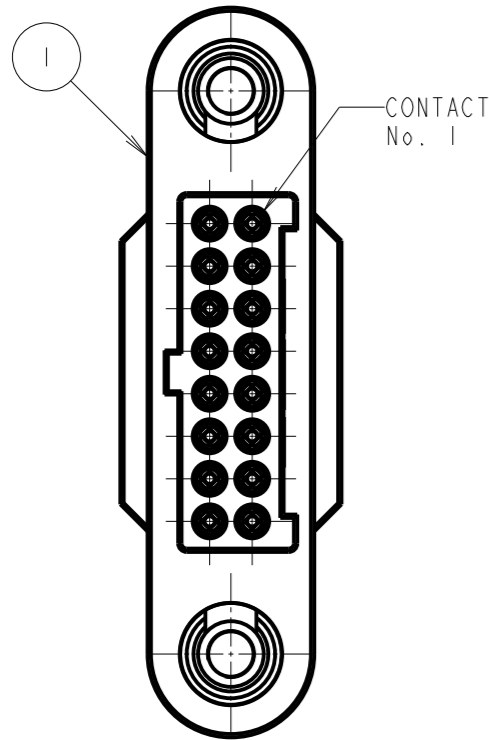
IF IN DOUBT - ASK

©

NOT TO SCALE

THIRD ANGLE PROJECTION

ALL DIMENSIONS IN mm



EXAMPLE SHOWN: FEMALE-TO-FEMALE  
STANDARD WIRING  
G125-FC11605F1-0150F1

## ORDER CODE:

**G125-XXXXX05XX-XXXXXX**

CONNECTOR 1: \_\_\_\_\_ CONNECTOR 2: \_\_\_\_\_  
 F = FEMALE FIXING STYLE:  
 M = MALE F0/F1/F2/F3/F5  
 WIRING STYLE: \_\_\_\_\_ M0/M1/M2/M3/M5  
 C = STANDARD WIRE DIM 'A' LENGTH:  
 D = TWISTED PAIR 0060 = 60mm MIN  
 WIRE GAUGE: \_\_\_\_\_ 9999 = 9999mm MAX  
 1 = 26AWG  
 2 = 28AWG  
 TOTAL No. OF CONTACTS: \_\_\_\_\_ CONNECTOR 1 FIXING STYLE:  
 06, 10, 12, 16, F0/F1/F2/F3/F5  
 20, 26, 34, 50 M0/M1/M2/M3/M5

### NOTES:

10. POSSIBLE CONFIGURATIONS:  
FEMALE-TO-FEMALE,  
MALE-TO-FEMALE,  
MALE-TO-MALE.
11. FOR POSSIBLE COMBINATIONS, SEE BOM TABLE ON SHEET 6.
12. ASSEMBLY G125-FC11605F1-0150F1 SHOWN FOR ILLUSTRATIVE PURPOSES ONLY. SEE ORDER CODE FOR PART NUMBER.
13. WIRING OF CONNECTOR:  
CONTACT 1 TO CONTACT 1,  
CONTACT 2 TO CONTACT 2, ETC.

RTP	I	17.01.23	32231
NAME	ISS.	DATE	CN/CO
APPROVED: A.BOXALL			
CHECKED: M.RUDKIN			
DRAWN: R.PORTLOCK			
CUSTOMER REF.:			
ASSEMBLY DRG:			

**HARWIN**

www.harwin.com  
technical@harwin.com

THIS DRAWING AND ANY INFORMATION OR DESCRIPTIVE MATTER SET OUT HEREON ARE CONFIDENTIAL AND COPYRIGHT PROPERTY OF THE HARWIN GROUP AND MUST NOT BE DISCLOSED, LOANED, COPIED OR USED FOR MANUFACTURING, TENDERING OR FOR ANY OTHER PURPOSE WITHOUT THEIR WRITTEN PERMISSION.

TOLERANCES  
 X. = ±1mm  
 X.X = ±0.50mm  
 X.XX = ±0.20mm  
 X.XXX = ±0.01mm  
 ANGLES = ±5°  
 UNLESS STATED

MATERIAL:  
 SEE SHEET 6  
 FINISH: SEE SHEET 6  
 S/AREA: mm<sup>2</sup>

TITLE:  
 GECKO SL  
 CABLE ASSEMBLY

DRAWING NUMBER:  
**G125-XXXXX05XX-XXXXXX**

SHT  
 7 OF 9

# Customer Information Sheet

DRAWING No.: G125-XXXXX05XX-XXXXXX

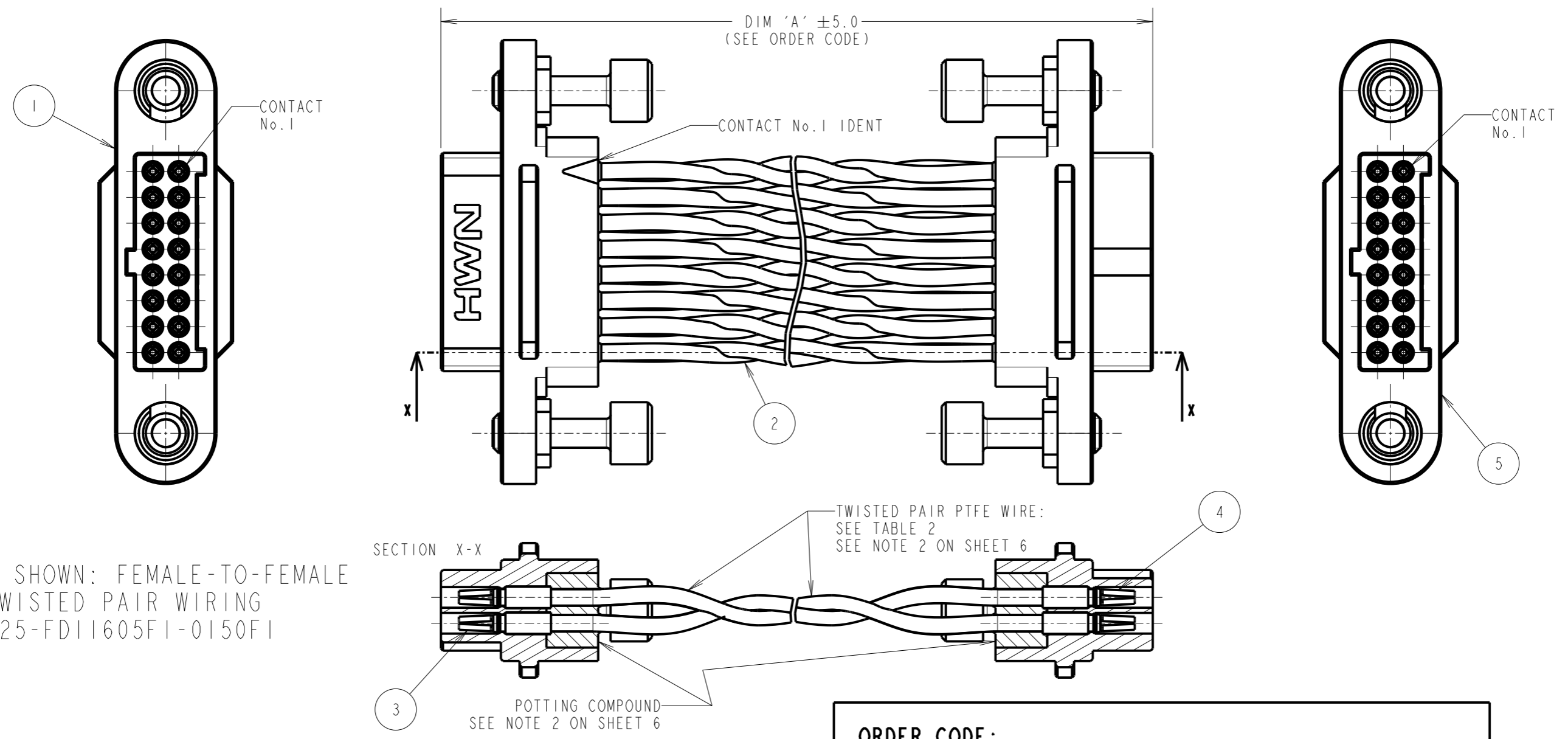
IF IN DOUBT - ASK

©

NOT TO SCALE

THIRD ANGLE PROJECTION

ALL DIMENSIONS IN mm



EXAMPLE SHOWN: FEMALE-TO-FEMALE  
TWISTED PAIR WIRING  
G125-FD11605F1-0150F1

TABLE 2: TWISTED PAIR CABLE CONFIGURATIONS			
WIRING FOR EXAMPLE PART No. G125-FD10805F1-0150F1			
TWISTED PAIR No.	CONNECTOR PIN No.	TURNS PER INCH	WIRE COLOUR
1	1	3	WHITE & GREEN
	5		
2	2	2	WHITE & RED
	6		
3	3	3	WHITE & GREEN
	7		
4	4	2	WHITE & RED
	8		

FOR CONNECTORS WITH MORE THAN 8 SIGNAL CONTACTS, CONTINUE TWIST & CABLE PIN OUT CONVENTION IN THE SAME PATTERN.  
(I.E. TWISTED PAIR BETWEEN CONTACT X & CONTACT X)

SEE BILL OF MATERIALS TABLE ON SHEET 6 FOR TWISTED PAIR PART NUMBERS.

- NOTES:
- POSSIBLE CONFIGURATIONS:  
FEMALE-TO-FEMALE,  
MALE-TO-FEMALE,  
MALE-TO-MALE.
  - FOR POSSIBLE COMBINATIONS, SEE BOM TABLE ON SHEET 1.
  - ASSEMBLY G125-FC11605F1-0150F1 SHOWN FOR ILLUSTRATIVE PURPOSES ONLY. SEE ORDER CODE FOR PART NUMBER.

**ORDER CODE:**  
**G125-XXXXX05XX-XXXXXX**

CONNECTOR 1: \_\_\_\_\_ CONNECTOR 2 \_\_\_\_\_  
 F = FEMALE FIXING STYLE:  
 M = MALE F0/F1/F2/F3/F5  
 M0/M1/M2/M3/M5

WIRING STYLE: \_\_\_\_\_ DIM 'A' LENGTH:  
 C = STANDARD WIRE 0060 = 60mm MIN  
 D = TWISTED PAIR 9999 = 9999mm MAX

WIRE GAUGE: \_\_\_\_\_  
 1 = 26AWG  
 2 = 28AWG

TOTAL No. OF CONTACTS: \_\_\_\_\_ CONNECTOR 1 FIXING STYLE:  
 06, 10, 12, 16, F0/F1/F2/F3/F5  
 20, 26, 34, 50 M0/M1/M2/M3/M5

RTP	I	17.01.23	32231
NAME	ISS.	DATE	CN/CO
APPROVED: A.BOXALL			
CHECKED: M.RUDKIN			
DRAWN: R.PORTLOCK			
CUSTOMER REF.:			
ASSEMBLY DRG:			

 www.harwin.com technical@harwin.com	THIS DRAWING AND ANY INFORMATION OR DESCRIPTIVE MATTER SET OUT HEREON ARE CONFIDENTIAL AND COPYRIGHT PROPERTY OF THE HARWIN GROUP AND MUST NOT BE DISCLOSED, LOANED, COPIED OR USED FOR MANUFACTURING, TENDERING OR FOR ANY OTHER PURPOSE WITHOUT THEIR WRITTEN PERMISSION.	TOLERANCES	MATERIAL:	TITLE:
		X. = ±1mm X.X = ±0.50mm X.XX = ±0.20mm X.XXX = ±0.01mm ANGLES = ±5° UNLESS STATED	SEE SHEET 6	GECKO SL CABLE ASSEMBLY
		FINISH: SEE SHEET 6	DRAWING NUMBER:	SHT 8 OF 9
		S/AREA: mm <sup>2</sup>	<b>G125-XXXXX05XX-XXXXXX</b>	

# Customer Information Sheet

DRAWING No.: G125-XXXXX05XX-XXXXXX

IF IN DOUBT - ASK

©

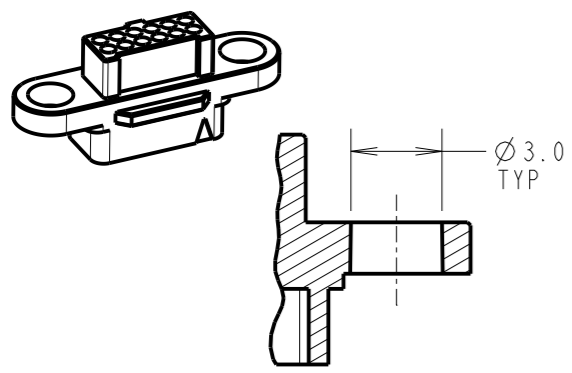
NOT TO SCALE

THIRD ANGLE PROJECTION

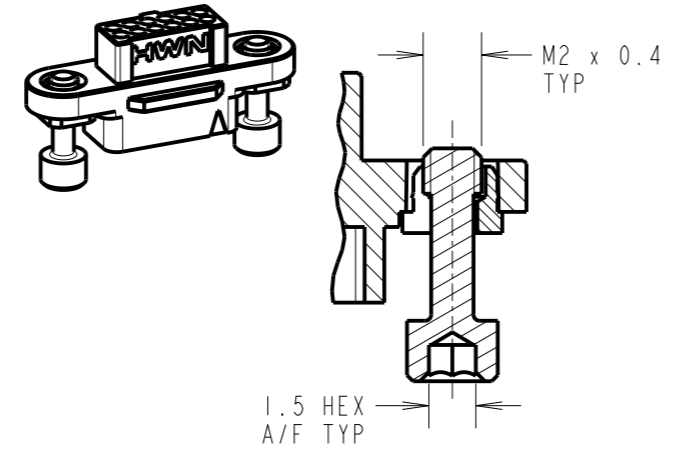
ALL DIMENSIONS IN mm

## FIXING STYLES

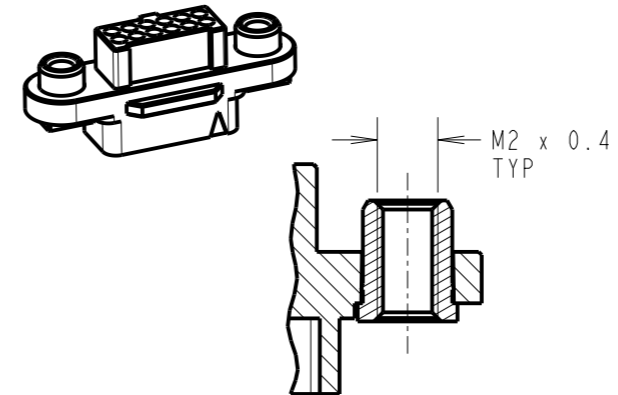
F0  
EXAMPLE: G125-224129600



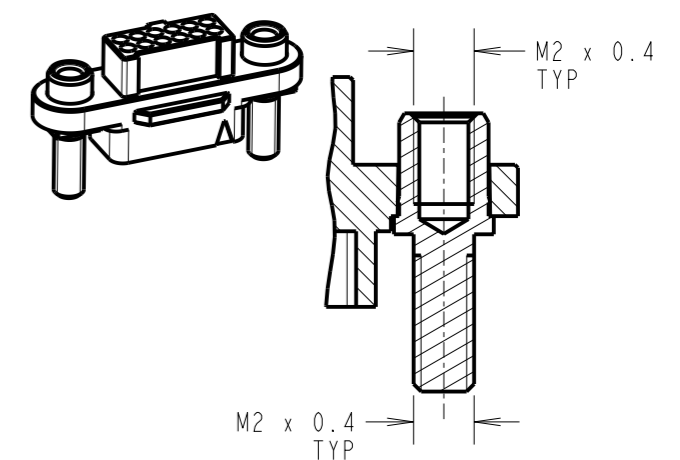
F1  
EXAMPLE: G125-2241296F1



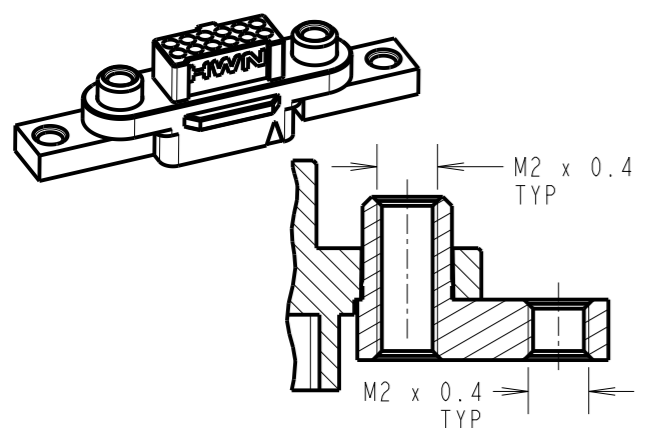
F2  
EXAMPLE: G125-2241296F2



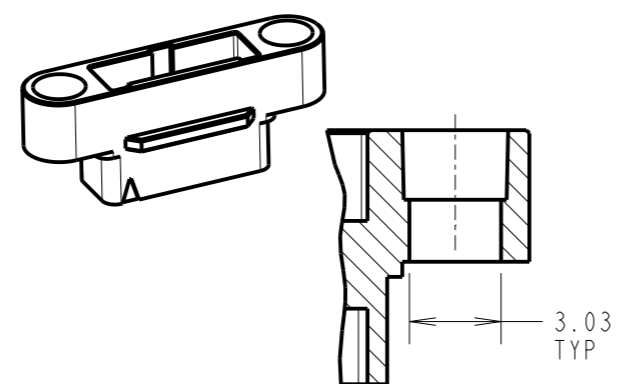
F3  
EXAMPLE: G125-2241296F3



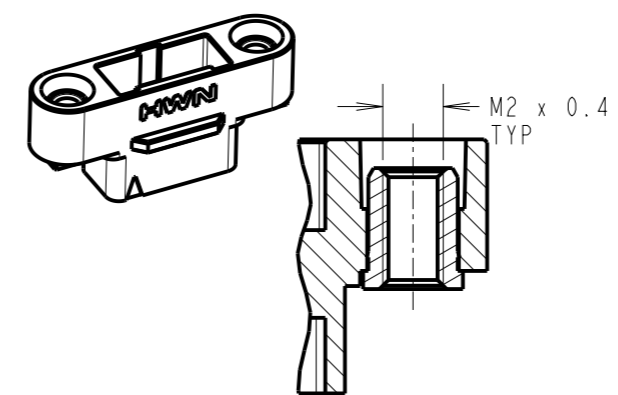
F5  
EXAMPLE: G125-2241296F5



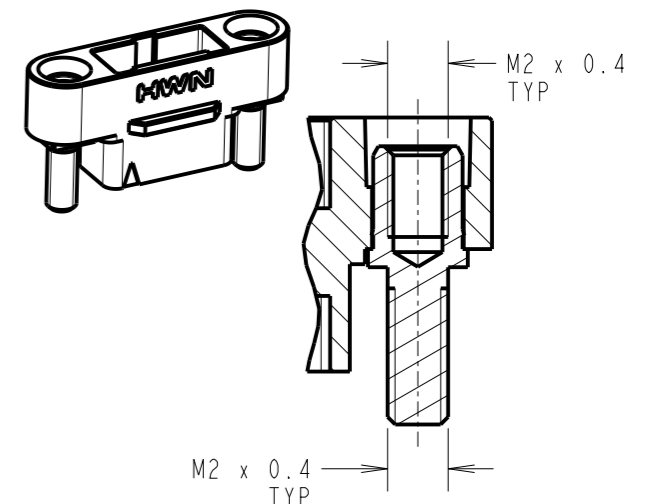
M0  
EXAMPLE: G125-324129600



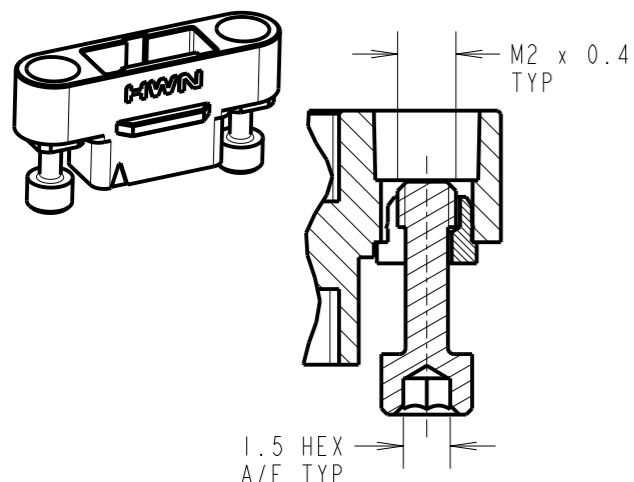
M1  
EXAMPLE: G125-3241296M1



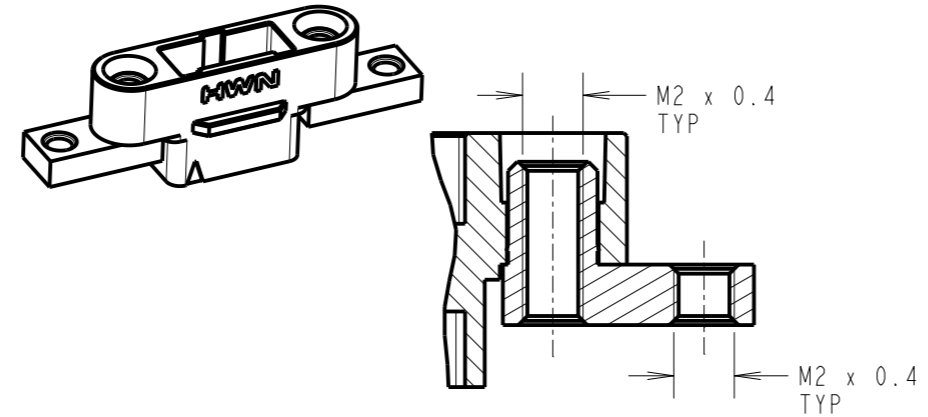
M2  
EXAMPLE: G125-3241296M2



M3  
EXAMPLE: G125-3241296M3




M5  
EXAMPLE: G125-3241296M5



NOTES:  
17. SEE BILL OF MATERIALS TABLE ON SHEET 6 AND ORDER CODE FOR FIXING IDENTIFICATION.

RTP	I	17.01.23	32231
NAME	ISS.	DATE	CN/CO
APPROVED: A.BOXALL			
CHECKED: M.RUDKIN			
DRAWN: R.PORTLOCK			
CUSTOMER REF.:			
ASSEMBLY DRG:			

 <a href="http://www.harwin.com">www.harwin.com</a> <a href="mailto:technical@harwin.com">technical@harwin.com</a>	THIS DRAWING AND ANY INFORMATION OR DESCRIPTIVE MATTER SET OUT HEREON ARE CONFIDENTIAL AND COPYRIGHT PROPERTY OF THE HARWIN GROUP AND MUST NOT BE DISCLOSED, LOANED, COPIED OR USED FOR MANUFACTURING, TENDERING OR FOR ANY OTHER PURPOSE WITHOUT THEIR WRITTEN PERMISSION.	TOLERANCES X. = ±1mm X.X = ±0.50mm X.XX = ±0.20mm X.XXX = ±0.01mm ANGLES = ±5° UNLESS STATED	MATERIAL: SEE SHEET 6	TITLE: GECKO SL CABLE ASSEMBLY
		FINISH: SEE SHEET 6 S/AREA: mm <sup>2</sup>	DRAWING NUMBER: <b>G125-XXXXX05XX-XXXXXX</b>	SHT 9 OF 9