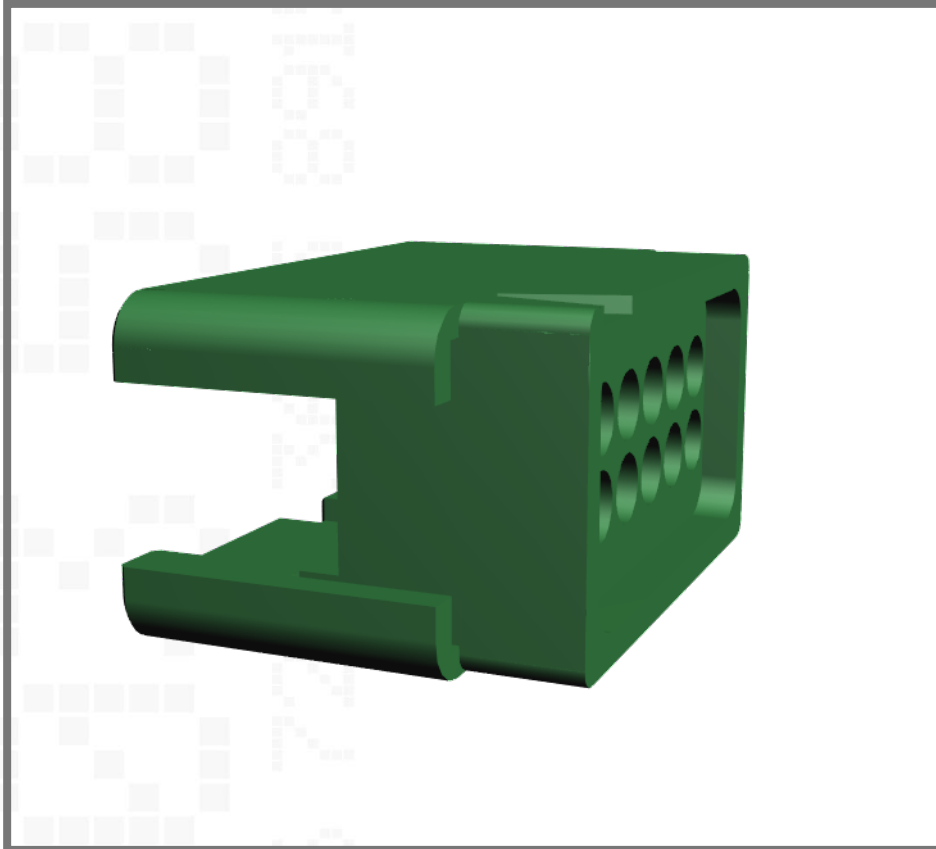


G125-3041296L0

Gecko DIL Male Crimp Connector Housing, 1.25mm pitch



Double row, 6+6 contact arrangement, no latches

Technical Drawing:

[G125-304L0.pdf](#)

Website

[G125-3041296L0](#)

Component Specification:

[C125XX](#)

[Request an evaluation sample](#)