

Customer Information Sheet

IF IN DOUBT - ASK

©

NOT TO SCALE

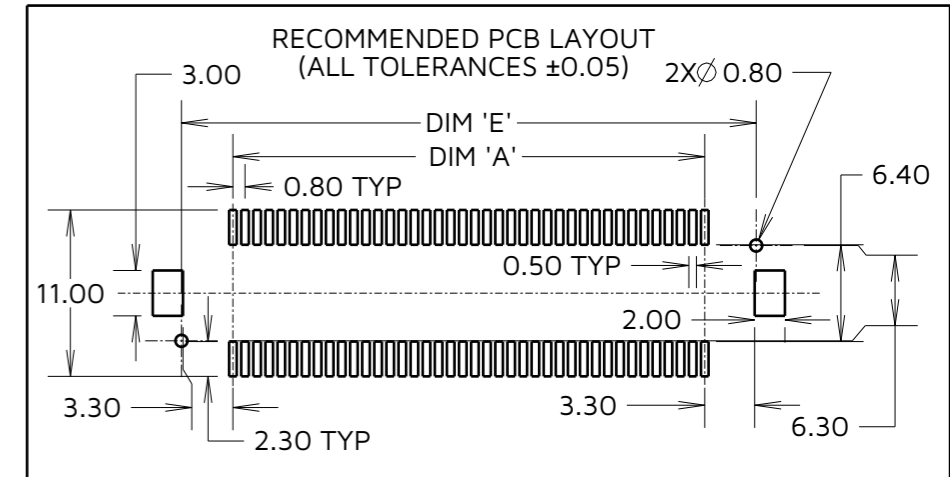
THIRD ANGLE PROJECTION

ALL DIMENSIONS IN mm

ORDER CODE:

F30-200XXX45R

No. OF CONTACTS: _____
060, 080, 100



DETAIL 'B'

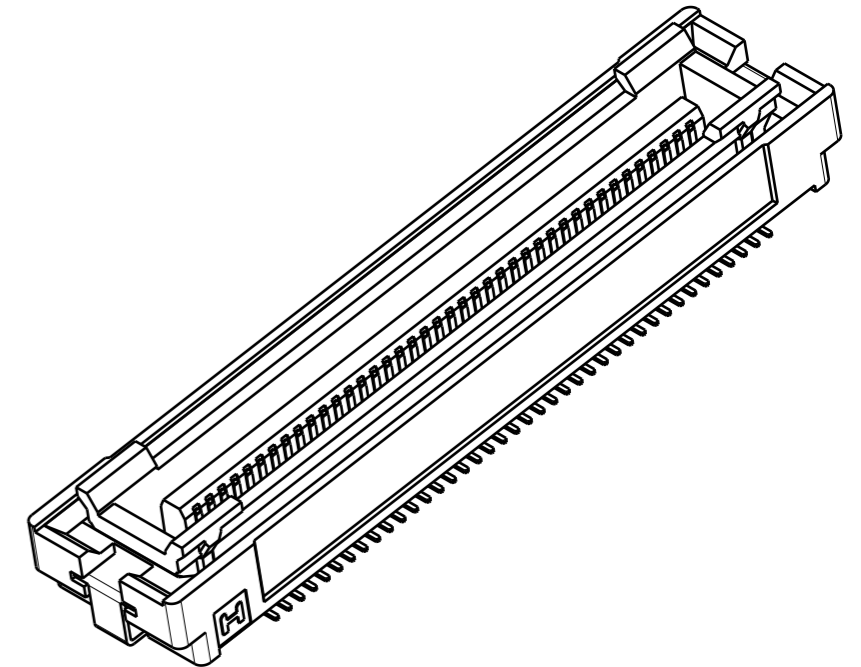
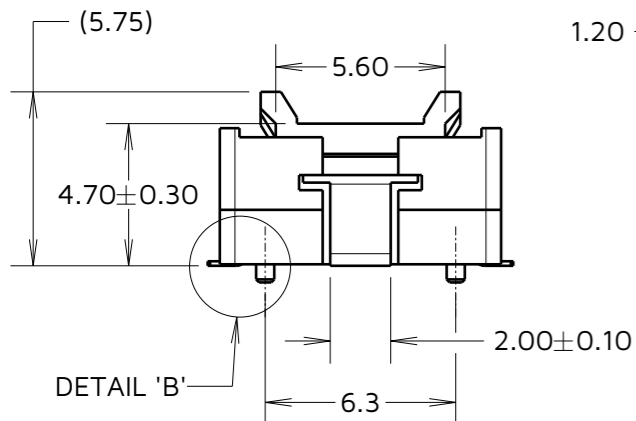
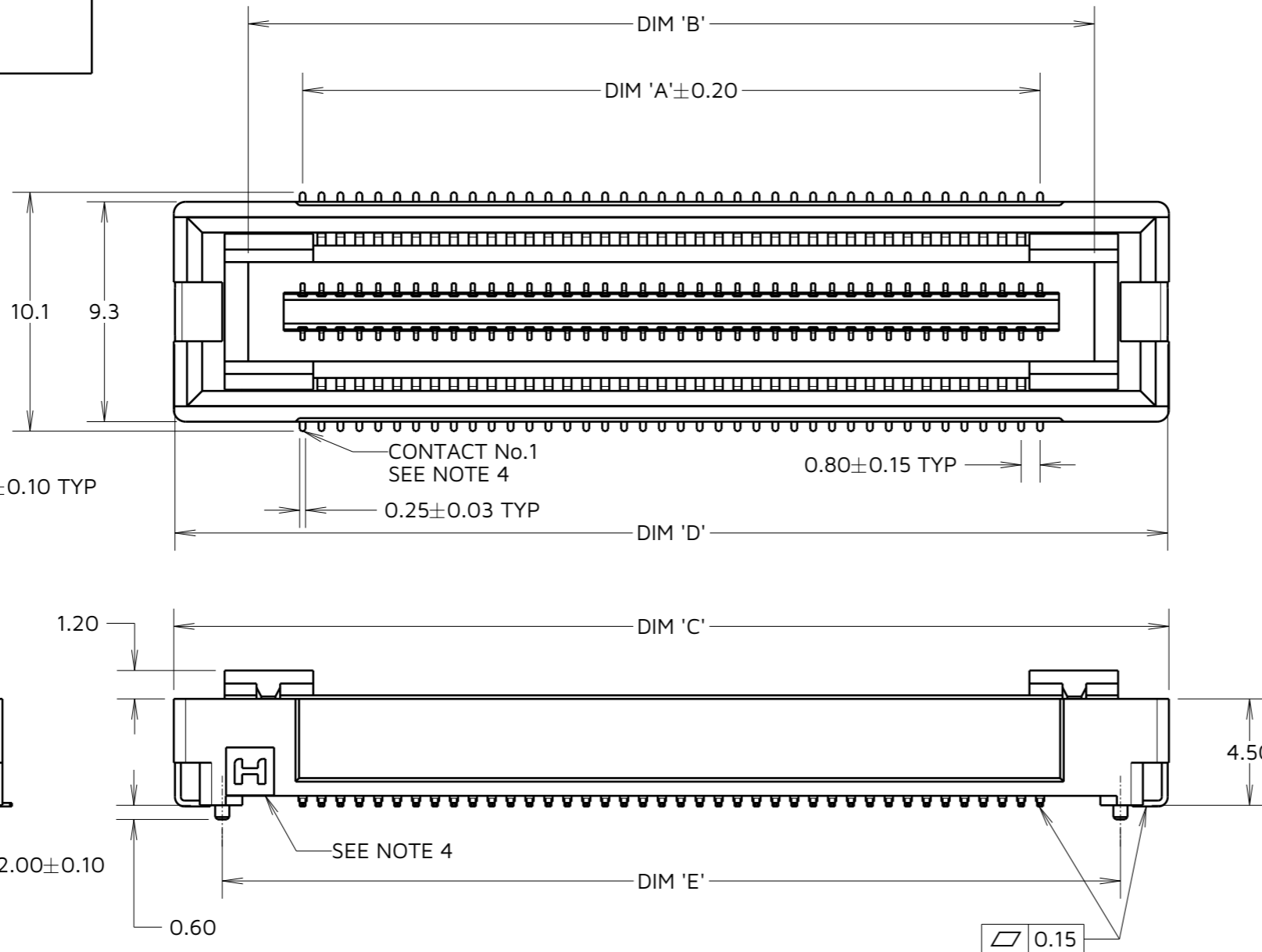
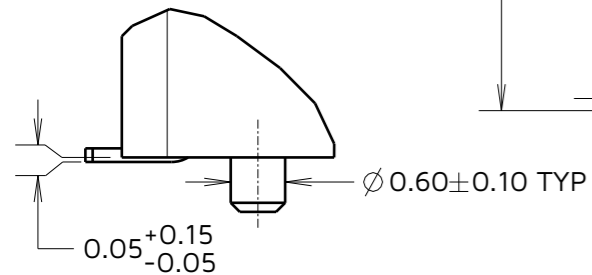


TABLE 1: DIMENSIONS

No. OF CONTACTS	DIM 'A'	DIM 'B'	DIM 'C'	DIM 'D'	DIM 'E'
60	23.20	27.8	34.1	34.0	30.0
80	31.20	35.8	42.1	42.0	38.0
100	39.20	43.8	50.1	50.0	46.0

TOLERANCES

X. = ±0.30mm	X.° = ±5.0°
.X = ±0.25mm	.X° = ±3.0°
.XX = ±0.15mm	.XX° = ±2.0°
.XXX = ±0.10mm	.XXX° = ±1.0°

AB	2	24.02.24	33735
NAME	ISS.	DATE	CN/CO
APPROVED:		F.CHRISPINE	
CHECKED:		A.YEOMANS	
DRAWN:		A.BOXALL	
ASSEMBLY DRG:			

NOTES:

- SEE COMPONENT SPECIFICATION C057XX (LATEST ISSUE) FOR COMPLETE CONNECTOR SPECIFICATIONS.
- PART SHOWN IS F30-20008045R, SEE ORDER CODE FOR OTHER VARIANTS
- SEE SHEET 4 FOR TAPE AND REEL DETAILS.
- HARWIN LOGO IS SHOWN IN THIS ORIENTATION FOR REFERENCE ONLY. LOGO IS UNRELATED TO CONTACT No.1, AS CONTACT No.1 WILL ALWAYS BE THIS POSITION.

HARWIN

www.harwin.com

TOLERANCES
X. = ±1mm
X.X = ±0.50mm
X.XX = ±0.20mm
X.XXX = ±0.01mm
ANGLES = ±5°
UNLESS STATED

THIS DRAWING AND ANY INFORMATION OR DESCRIPTIVE MATTER SET OUT HEREON ARE CONFIDENTIAL AND COPYRIGHT PROPERTY OF THE HARWIN GROUP AND MUST NOT BE DISCLOSED, LOANED, COPIED OR USED FOR MANUFACTURING, TENDERING OR FOR ANY OTHER PURPOSE WITHOUT THEIR WRITTEN PERMISSION.

MATERIAL:

SEE NOTE 1

TITLE: **0.8mm PITCH MALE FLECTO CONNECTOR (4.70mm HEIGHT)**

DRAWING NUMBER:
F30-200XXX45R

SHT
3
OF
4

Customer Information Sheet

IF IN DOUBT - ASK

©

NOT TO SCALE

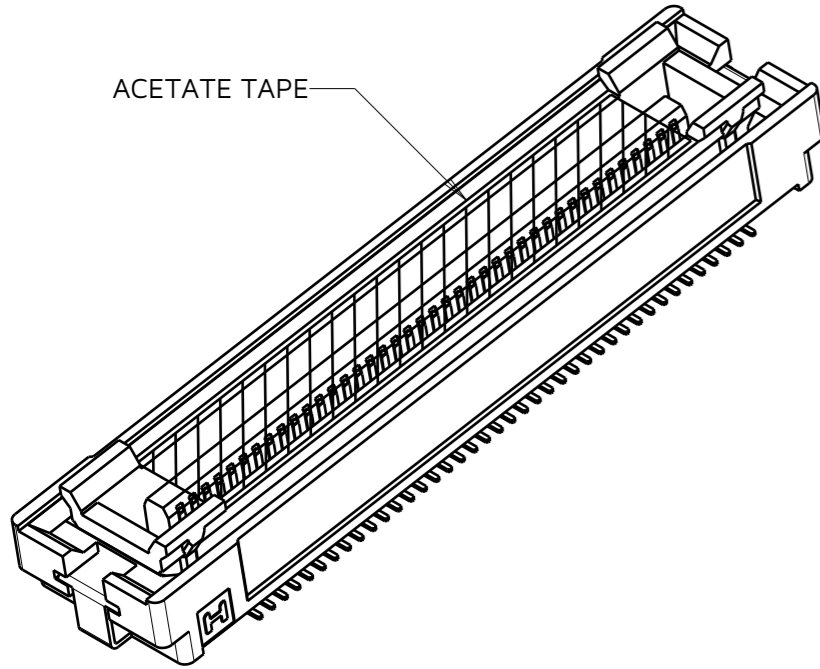
THIRD ANGLE PROJECTION

ALL DIMENSIONS IN mm

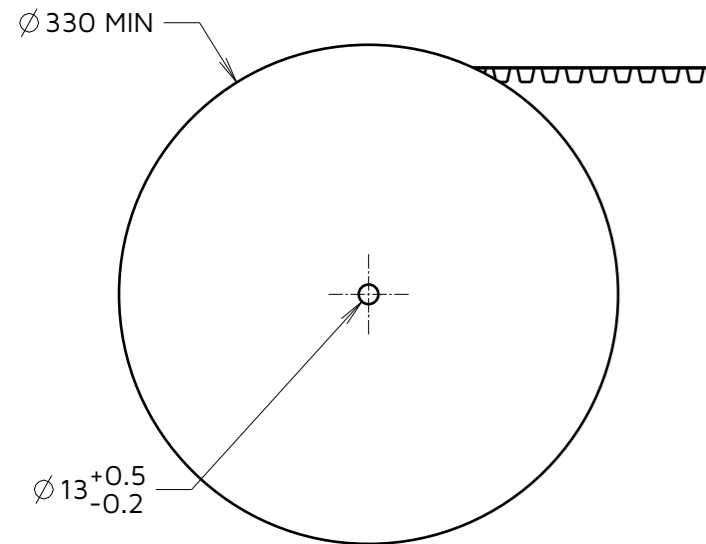
ORDER CODE:

F30-200XXX45R

No. OF CONTACTS: _____
060, 080, 100



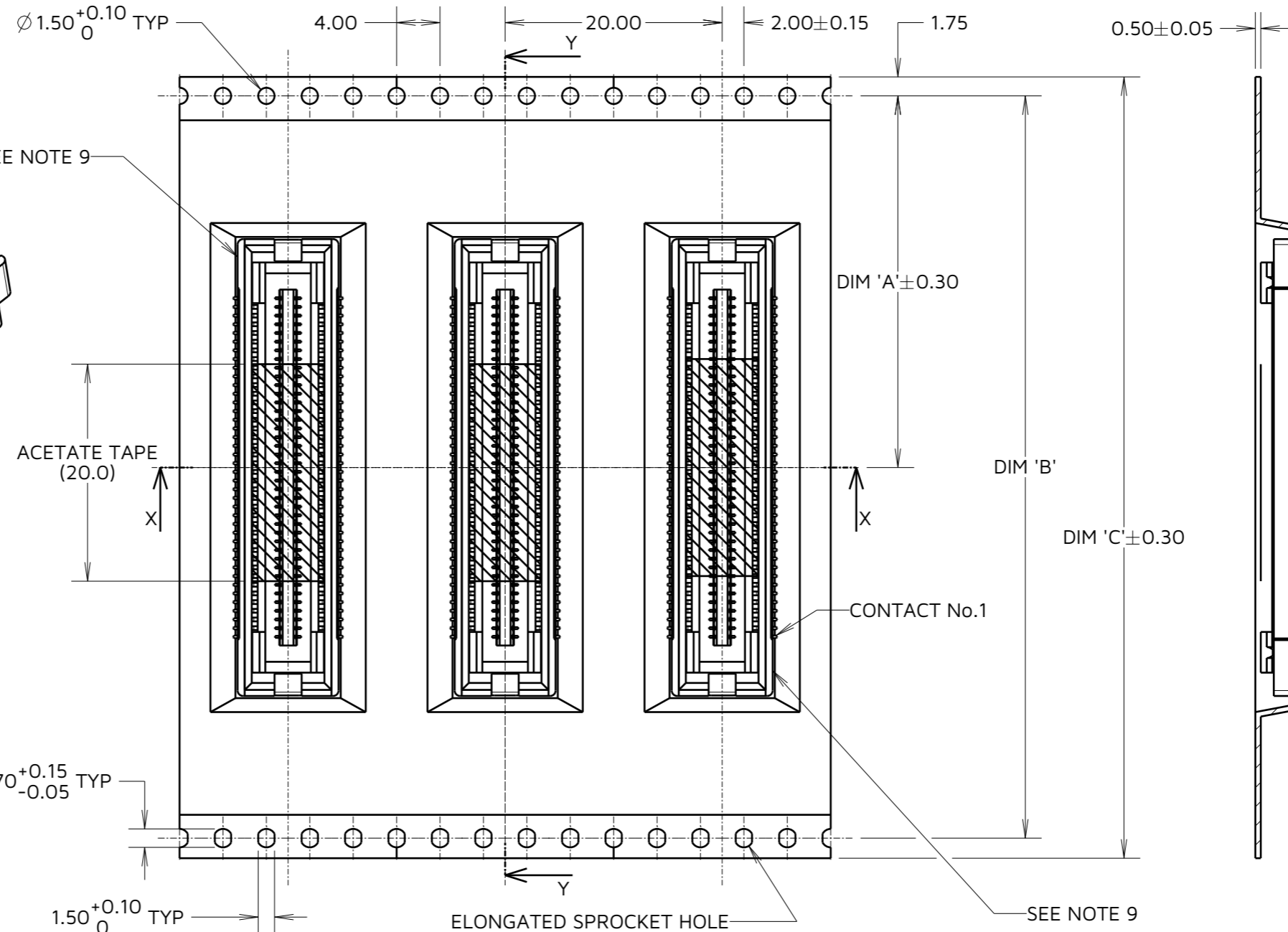
ACETATE TAPE



REEL DIRECTION

ELONGATED SPROCKET HOLE

- NOTES:
- PRODUCT TAPE AND REELED IN ACCORDANCE WITH EIA-481 STANDARD.
 - CARRIER TAPE MATERIAL: BLACK POLYSTYRENE.
 - COMPONENTS PER REEL: 450PCS
 - TAPE POCKETS MAY DIFFER VISUALLY FROM DRAWING.
 - POSITION OF HARWIN LOGO IS NOT CRITICAL AND MAY BE IN EITHER MARKED POSITION. LOGO DOES NOT AFFECT CONTACT No.1.



SEE NOTE 9

ACETATE TAPE (20.0)

X

DIM 'A' ± 0.30

DIM 'B'

DIM 'C' ± 0.30

CONTACT No.1

SECTION Y-Y

SEE NOTE 9

ELONGATED SPROCKET HOLE

ACETATE TAPE (6.60)

6.80

SECTION X-X

No. OF CONTACTS	DIM 'A'	DIM 'B'	DIM 'C'
60	26.20	52.40	56.00
80	34.20	68.40	72.00
100			

AB	2	24.02.24	33735
NAME	ISS.	DATE	CN/CO
APPROVED:		F.CHRISPINE	
CHECKED:		A.YEOMANS	
DRAWN:		A.BOXALL	
ASSEMBLY DRG:			

HARWIN

www.harwin.com

TOLERANCES
X. = $\pm 1\text{mm}$
X.X = $\pm 0.50\text{mm}$
X.XX = $\pm 0.20\text{mm}$
X.XXX = $\pm 0.01\text{mm}$
ANGLES = $\pm 5^\circ$
UNLESS STATED

THIS DRAWING AND ANY INFORMATION OR DESCRIPTIVE MATTER SET OUT HEREON ARE CONFIDENTIAL AND COPYRIGHT PROPERTY OF THE HARWIN GROUP AND MUST NOT BE DISCLOSED, LOANED, COPIED OR USED FOR MANUFACTURING, TENDERING OR FOR ANY OTHER PURPOSE WITHOUT THEIR WRITTEN PERMISSION.

MATERIAL:

SEE NOTE 6

TITLE: **0.8mm PITCH MALE FLECTO CONNECTOR (4.70mm HEIGHT)**

DRAWING NUMBER: **F30-200XXX45R**

SHT 4 OF 4