

A - PIN CROSS SECTION
 B - PIN TYPE
 L - OVERALL LENGTH
 P - STAR HEIGHT
 C - PLATING FINISH
 M - MATERIAL

A - PIN CROSS SECTION

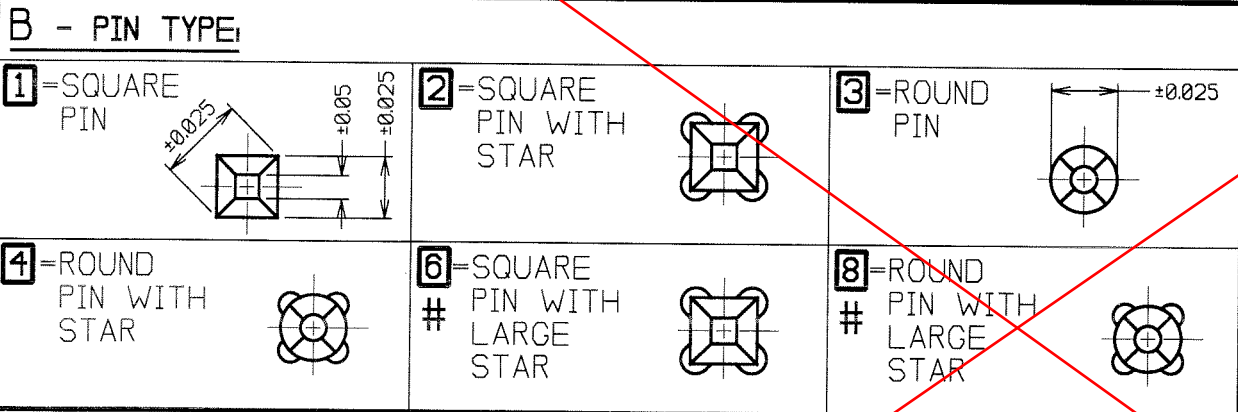
THESE VALUES APPLY FOR BOTH ROUND AND SQUARE CROSS SECTIONS.

#18	= 0.457 Ø/SQ.
20	= 0.508 Ø/SQ.
#24	= 0.610 Ø/SQ.
25	= 0.635 Ø/SQ.
#28	= 0.711 Ø/SQ.
31	= 0.787 Ø/SQ.
#36	= 0.914 Ø/SQ.
40	= 1.014 Ø/SQ.
45	= 1.143 Ø/SQ.
#62	= 1.575 Ø/SQ.

= NON-PREFERRED SIZE, SPECIAL ORDER ONLY (SEE ALSO SHEET 2)

SEE SHEET 2 FOR MANUFACTURING DETAILS AND PIN REFERENCE TABLE

OBSOLETE

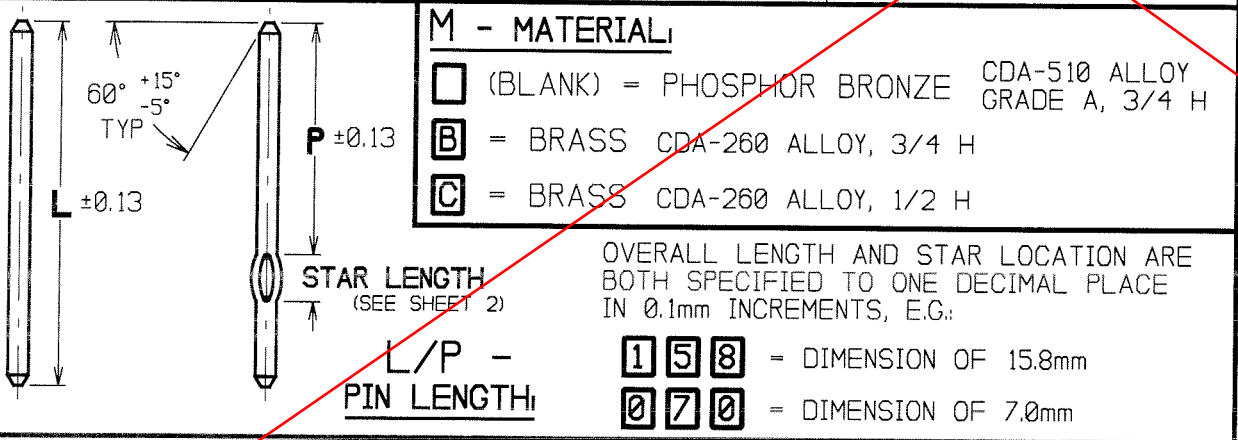


C - FINISH:

1.3µ NICKEL UNDERPLATE, PLUS:

00	= UNPLATED
05	= 0.13µ GOLD
06	= 3µ MIN 90/10 TIN/LEAD
31	= 0.76µ GOLD
33	= 0.25µ GOLD
40	= 3µ MIN TIN (F0116)
46	= 3µ MIN 100% TIN

WJB	7	30.06.04	8050
WJB	6	17.09.03	7614
WJB	5	07.12.98	4670
WJB	4	06.10.98	4112
WJB	3	19.03.96	3232
WJB	2	12.03.96	3228
WJB	1	17.08.95	----
NAME	ISS.	DATE	C/NOTE
APPROVED:			
CHECKED:			
DRAWN: W. J. BOURNE			
CUSTOMER REF.:			
ASSEMBLY DRG:			



HARWIN

HARWIN INC U.S.A. TEL: (812) 285 0055 FAX: (812) 285 0056	HARWIN PLC U.K. TEL: 023 9237 0451 FAX: 023 9231 4590	HARWIN PTE SINGAPORE TEL: 65 7794909 FAX: 65 7793868
--	--	---

THIS DRAWING AND ANY INFORMATION OR DESCRIPTIVE MATTER SET OUT HEREON ARE CONFIDENTIAL AND COPYRIGHT PROPERTY OF THE HARWIN GROUP AND MUST NOT BE DISCLOSED, LOANED, COPIED OR USED FOR MANUFACTURING, TENDERING OR FOR ANY OTHER PURPOSE WITHOUT THEIR WRITTEN PERMISSION.

TOLERANCES

- X. = ±1mm
- XX = ±0.25mm
- XX = ±0.10mm
- XXX = ±0.01mm
- ANGLES = ±5°
- UNLESS STATED

MATERIAL:

PBM-XXXXX
 BRM-XXXXX
 BRM-XXXXXX

FINISH: SEE SECTION C

S/AREA: mm²

TITLE:

PINS; END-TO-END, LOOSE AND STRIPS

DRAWING NUMBER:

EXX-XXXXXXXXXX,
 LXX-XXXXXXXXXX, SX-XXXXXXXXXX

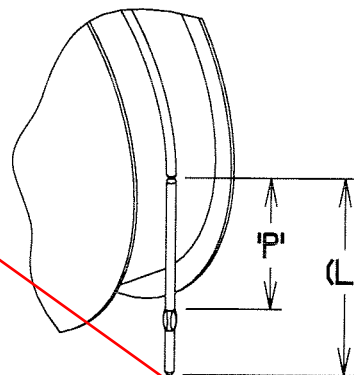
SHT 1 OF 2

PIN PART No.	WIRE TYPE	STAR?	WIRE SIZE	NOTCH SIZE	STAR DIAGONAL	STAR LENGTH	MOUNTING HOLE SIZE
# X18-1	SQUARE	NO	0.457 SQ.	0.20	0.61	N/A	Ø0.58-0.53
# X18-2	SQUARE	YES	0.457 SQ.	0.28	0.79-0.74	1.53	Ø0.69-0.64
X20-1	SQUARE	NO	0.508 SQ.	0.25	0.69	N/A	Ø0.66-0.61
X20-2	SQUARE	YES	0.508 SQ.	0.25	0.86-0.81	1.02	Ø0.76-0.71
X20-3	ROUND	NO	Ø0.508	0.25	N/A	N/A	N/A
X20-4	ROUND	YES	Ø0.508	0.25	0.68-0.63	1.02	Ø0.58-0.53
X20-8	ROUND	LARGE	Ø0.508	0.25	0.90-0.85	1.02	Ø0.78-0.69
# X24-1	SQUARE	NO	0.610 SQ.	0.30	0.84	N/A	Ø0.74-0.68
# X24-2	SQUARE	YES	0.610 SQ.	0.30	0.99-0.94	1.53	Ø0.86-0.79
# X24-3	ROUND	NO	Ø0.610	0.30	N/A	N/A	N/A
# X24-4	ROUND	YES	Ø0.610	0.30	0.84-0.79	1.53	Ø0.73-0.64
X25-1	SQUARE	NO	0.635 SQ.	0.33	0.84	N/A	Ø0.76-0.69
X25-2	SQUARE	YES	0.635 SQ.	0.33	0.99-0.94	1.53	Ø0.86-0.79
X25-3	ROUND	NO	Ø0.635	0.33	N/A	N/A	N/A
X25-4	ROUND	YES	Ø0.635	0.33	0.84-0.79	1.53	Ø0.73-0.64
# X25-6	SQUARE	LARGE	0.635 SQ.	0.33	1.12-1.04	1.53	Ø0.99-0.89
# X25-8	ROUND	LARGE	0.635 SQ.	0.33	0.90-0.85	1.53	Ø0.78-0.69
# X28-1	SQUARE	NO	0.711 SQ.	0.36	0.94	N/A	Ø0.86-0.76
# X28-2	SQUARE	YES	0.711 SQ.	0.36	1.22-1.14	1.53	Ø1.12-0.99
X31-1	SQUARE	NO	0.787 SQ.	0.41	1.07	N/A	Ø0.97-0.86
X31-2	SQUARE	YES	0.787 SQ.	0.41	1.37-1.30	1.53	Ø1.24-1.14
X31-3	ROUND	NO	Ø0.787	0.41	N/A	N/A	N/A
X31-4	ROUND	YES	Ø0.787	0.41	1.09-1.02	1.53	Ø0.97-0.86
# X36-1	SQUARE	NO	0.914 SQ.	0.56	1.24	N/A	Ø1.14-1.04
# X36-2	SQUARE	YES	0.914 SQ.	0.56	1.57-1.50	1.53	Ø1.45-1.35
# X36-3	ROUND	NO	Ø0.914	0.56	N/A	N/A	N/A
X40-1	SQUARE	NO	1.014 SQ.	0.61	1.37	N/A	Ø1.27-1.17
X40-2	SQUARE	YES	1.014 SQ.	0.61	1.78-1.71	1.53	Ø1.62-1.52
X40-3	ROUND	NO	Ø1.014	0.61	N/A	N/A	N/A
X40-4	ROUND	YES	Ø1.014	0.61	1.35-1.30	1.53	Ø1.22-1.12
X40-8	ROUND	LARGE	Ø1.014	0.61	1.45-1.40	1.53	Ø1.32-1.22
X45-1	SQUARE	NO	1.143 SQ.	0.66	1.55	N/A	Ø1.47-1.37
X45-2	SQUARE	YES	1.143 SQ.	0.66	1.98-1.91	1.53	Ø1.83-1.73
# X62-3	ROUND	NO	Ø1.575	0.86	N/A	N/A	N/A
# X62-4	ROUND	YES	Ø1.575	0.86	1.98-1.91	1.53	Ø1.83-1.73

NOTES:

- PINS TO BE MANUFACTURED AND CHECKED IN ACCORDANCE WITH WORK INSTRUCTION WI-22, QUALITY PLAN QP-73, AND PIN INSPECTION DRAWING 'PIN-INSPI'.
- SUB-CONTRACT PINS TO BE ALSO INSPECTED IN ACCORDANCE WITH QUALITY INSTRUCTION QI-02.
- ANY PIN REQUIRED THAT DOES NOT EXACTLY COMPLY WITH THIS SYSTEM WILL BE ALLOCATED A CUSTOMER SPECIAL NUMBER WITH A 'Q' PREFIX (i.e. Q10XXXXC).
- PACKING:
 END-TO-END PINS = AS PER PACKING SPECIFICATION P106, REEL DIRECTION BELOW.
 LOOSE PINS = PACK IN PLASTIC BAGS, QUANTITY = 1,000 PINS.
 STRIP PINS = BREAK STRIPS OF PINS NO LONGER THAN 225mm FROM REEL OF END-TO-END PINS. PACK IN Y0160-00 BOX, 1,000 PINS PER BOX.

OBSOLETE



'P' DIMENSION NEAREST REEL

SEE SHEET 1 FOR PART NUMBER DETAILS

JAE	7	30.06.04	8050
WJB	6	17.09.03	7614
WJB	5	07.12.98	4670
WJB	4	06.10.98	4112
NAME	ISS.	DATE	C/NOTE
APPROVED: <i>[Signature]</i>			
CHECKED: <i>[Signature]</i>			
DRAWN:		W. J. BOURNE	
CUSTOMER REF.:			
ASSEMBLY DRG:			

HARWIN

HARWIN INC U.S.A. TEL: (812) 542 2540 FAX: (812) 542 2541	HARWIN PLC U.K. TEL: 023 9231 4545 FAX: 023 9231 4590	HARWIN PTE SINGAPORE TEL: 65 6779 4909 FAX: 65 6779 3868
--	--	---

THIS DRAWING AND ANY INFORMATION OR DESCRIPTIVE MATTER SET OUT HEREON ARE CONFIDENTIAL AND COPYRIGHT PROPERTY OF THE HARWIN GROUP AND MUST NOT BE DISCLOSED, LOANED, COPIED OR USED FOR MANUFACTURING, TENDERING OR FOR ANY OTHER PURPOSE WITHOUT THEIR WRITTEN PERMISSION.

TOLERANCES
 X. = ±1mm
 X.X = ±0.25mm
 X.XX = ±0.10mm
 X.XXX = ±0.01mm
 ANGLES = ±5°
 UNLESS STATED

MATERIAL:
 SEE SHEET 1
 FINISH: SEE SHEET 1
 S/AREA: mm²

TITLE:
 PINS; END-TO-END,
 LOOSE AND STRIPS
 DRAWING NUMBER:
 EXX-XXXXXXXXXX,
 LXX-XXXXXXXXXX, SXX-XXXXXXXXXX
 SHT 2 OF 2